



Dear Subscriber

Contained in this package is the first release of the ABS publication: *Producer Price Indexes, Australia* (Cat. no. 6427.0) for the June quarter 2001. This replaces the previous publications:

Price Index of Materials Used in Building Other Than House Building, Six State Capital Cities (Cat. no. 6407.0);

Price Index of Materials Used in House Building, Six State Capital Cities (Cat. no. 6408.0);

Price Indexes of Copper Materials, Australia (Cat. no. 6410.0);

Price Indexes of Materials Used In Manufacturing Industries, Australia (Cat. no. 6411.0);

Price Indexes of Articles Produced by Manufacturing Industry, Australia (Cat. no. 6412.0);

Price Indexes of Materials Used in Coal Mining, Australia (Cat. no. 6415.0);

Producer Price Indexes for Selected Service Industries, Australia (Cat. no. 6423.0); and

Stage of Production Producer Price Indexes, Australia (Cat. no. 6426.0).

This new publication contains the key series from the previous publications, and includes a new price index for the output of the building industry. Some tables from the former publications are not included in the new publication. However, these are contained in the attached publication supplement. To locate the tables you require, please see the attached concordance which lists where all tables from the previous publications can be found in either the new publication or supplement.

Commencing with the release of the December quarter 2001 publication in January 2002, it is expected that adhoc and regular access to ABS electronic products will be available via the ABS Website <www.abs.gov.au> at low cost. Users will then be expected to access from this new Internet based service, any tables no longer published which they still require.

Information on accessing this service and the costs involved will be provided to 2001 subscribers with their September quarter 2001 issue of *Producer Price Indexes, Australia* (Cat. no. 6427.0).

A special telephone service has been set up to assist users with this transition. If you have any queries or requests for data, please contact Lee Taylor on 1800 155 106.

Richard McKenzie

Director

Producer Price Indexes

Australian Bureau of Statistics

23/7/2001

CONCORDANCE : OLD TO NEW PUBLICATIONS

PRODUCER PRICE INDEXES AUSTRALIA (CAT. NO.6427.0)

New publication and
table number

Table name

Old catalogue and
table number

New publication and table number	Table name	Old catalogue and table number
Cat no. 6427.0	Stage of Production (SOP) Producer Price Indexes, Australia	Cat. no. 6426.0
6427.0 - table 1	Index Numbers by Stage and Source	6426.0 - table 1
6427.0 - table 2	Percentage Change by Stage and Source	6426.0 - table 2
6427.0 - table 3	Final Commodities by Source and Destination	6426.0 - table 3
6427.0 - table 4	Percentage Change, Final Commodities by Source and Destination	6426.0 - table 4
6427.0 - table 5	Contribution to Change in Final Commodities Index by Industry and Source	new table
6427.0 - table 6	Contribution to Change in Domestic Final Commodities Index by Industry and Destination	new table
6427.0 - table 7	Contribution to Change in Imported Final Commodities Index by Industry and Destination	new table
6427.0 - table 8	Contribution to Change in Intermediate Commodities Index by Industry and Source	new table
6427.0 - table 9	Contribution to Change in Preliminary Commodities Index by Industry and Source	new table
	Price Indexes of Articles Produced by Manufacturing Industry, Australia	Cat. no. 6412.0
6427.0 - table 10	Articles Produced by Manufacturing Industries, Division Index Numbers and Percentage Changes	6412.0 - table 1
6427.0 - table 11	Articles Produced by Manufacturing Industries, Subdivision/Group Index Numbers	6412.0 - table 3
	Price Indexes of Materials Used in Manufacturing Industries, Australia	Cat. no. 6411.0
6427.0 - table 12	Materials Used in Manufacturing Industries, Division Index Numbers	6411.0 - table 1
6427.0 - table 13	Materials Used in Manufacturing Industries, Division Percentage Changes	6411.0 - table 2
6427.0 - table 14	Materials Used in Manufacturing Industries, Subdivision and Group Index Numbers	6411.0 - table 4
	Price Indexes of Copper Materials, Australia	Cat. no. 6410.0
6427.0 - table 15	Copper Materials Used in the Manufacture of Electrical Equipment, Index Numbers and Percentage Changes	6410.0 - table 1
	Construction Industry Producer Price Indexes	Cat. no. New
6427.0 - table 16	Output of the Building Industry, Index Numbers and Percentage Changes	new table
	Price Index of Materials Used in House Building, Six State Capital Cities	Cat. no. 6408.0
6427.0 - table 17	Materials Used in House Building, Index Numbers by State Capital City	6408.0 - table 1
6427.0 - table 18	Materials Used in House Building, Percentage Changes by State Capital City	6408.0 - table 2
	Price Index of Materials Used in Building Other Than House Building, Six State Capital Cities	Cat. no. 6407.0
6427.0 - table 19	Materials Used in Building Other Than House Building, Index Numbers by State Capital City	6407.0 - table 1
6427.0 - table 20	Materials Used in Building Other Than House Building, Percentage Changes by State Capital City	6407.0 - table 2
	Price Indexes of Materials Used in Coal Mining, Australia	Cat. no. 6415.0
6427.0 - table 21	Materials Used in Coal Mining, Index Numbers and Percentage Changes	6415.0 - table 1
	Producer Price Indexes for Selected Service Industries, Australia	Cat. no. 6423.0
6427.0 - table 22	Output of the Transport (Freight) and Storage Industries, Index Numbers and Percentage Changes	6423.0 - table 1
6427.0 - table 23	Output of the Transport (Freight) and Storage Industries, Subdivision Index Numbers	new table
6427.0 - table 24	Output of the Property and Business Services Industries, Index Numbers and Percentage Changes	6423.0 - table 2
6427.0 - table 25	Output of the Property and Business Services Industries, Subdivision and Group Index Numbers	new table

CONCORDANCE : OLD PUBLICATION TO SUPPLEMENT

PRODUCER PRICE INDEXES AUSTRALIA (CAT. NO. 6427.0)

<i>Supplement table number</i>	<i>Table name</i>	<i>Old catalogue and table number</i>
Cat no. 6427.0	Stage of Production (SOP) Producer Price Indexes, Australia	Cat no. 6426.0
6427.0 - table 26	Stage of Production, Index Points, Final Commodities by Source and Destination, Including Exports	6426.0 - table 5
6427.0 - table 27	Stage of Production, Percentage Change, Final Commodities by Source and Destination, Including Exports	6426.0 - table 6
6427.0 - table 28	Price Indexes of Articles Produced by Manufacturing Industry, Australia Price Indexes of Articles Produced by Manufacturing Industries, Contribution of Subdivisions and Groups	Cat no. 6412.0 6412.0 - table 2
6427.0 - table 29	Price Indexes of Materials Used in Manufacturing Industries, Australia Price Index of Materials Used in Manufacturing Industries, Contribution of Materials by ANZSIC Industry of Origin	Cat no. 6411.0 6411.0 - table 3
6427.0 - table 30	Price Index of Materials Used in Manufacturing Industries, Indexes of Metallic Materials Used in the Fabricated Metal Products Industry	6411.0 - table 5
6427.0 - table 31	Price Index of Materials Used in House Building, Six State Capital Cities Price Index of Materials Used in House Building, Six State Capital Cities Contribution to all Groups Index	Cat no. 6408.0 6408.0 - table 3
6427.0 - table 32	Price Index of Materials Used in House Building, Six State Capital Cities Contribution By Materials Group	6408.0 - table 4
6427.0 - table 33	Price Index of Materials Used in Building Other Than House Building, Six State Capital Cities Price Index of Materials Used in Building Other than House Building, All Groups Index, Contribution of Major Building Materials	Cat no. 6407.0 6407.0 - table 3
6427.0 - table 34	Price Index of Materials Used in Building Other than House Building, Selected ANZSIC Groups, Index Numbers	6407.0 - table 4
6427.0 - table 35	Price Index of Materials Used in Building Other than House Building, Selected Building Materials, Index Numbers	6407.0 - table 5
6427.0 - table 36	Price Index of Materials Used in Building Other than House Building, Selected Major Building Materials, Index Numbers, Sydney and Melbourne	6407.0 - table 6
6427.0 - table 37	Price Index of Materials Used in Building Other than House Building, Selected Major Building Materials, Index Numbers, Brisbane and Adelaide	6407.0 - table 7
6427.0 - table 38	Price Index of Materials Used in Building Other than House Building, Selected Major Building Materials, Index Numbers, Perth and Hobart	6407.0 - table 8
6427.0 - table 39	Price Index of Materials Used in Building Other than House Building, Special Series, Index Numbers, Weighted Average of Six State Capital Cities	6407.0 - table 9
6427.0 - table 40	Price Index of Materials Used in Building Other than House Building, Special Series, Index Numbers, Sydney and Melbourne	6407.0 - table 10
6427.0 - table 41	Price Index of Materials Used in Building Other than House Building, Special Series, Index Numbers, Brisbane and Adelaide	6407.0 - table 11
6427.0 - table 42	Price Index of Materials Used in Building Other than House Building, Special Series, Index Numbers, Perth and Hobart	6407.0 - table 12
6427.0 - table 43	Producer Price Indexes for Selected Service Industries, Australia Producer Price Indexes for Selected Service Industries, Transport (Freight) and Storage Industry Index, Subdivision and Group Contributions	Cat no. 6423.0 6423.0 - table 3
6427.0 - table 44	Producer Price Indexes for Selected Service Industries, Property and Business Services Industry, Subdivision and Group Contributions	6423.0 - table 4
6427.0 - table 45	Producer Price Indexes for Selected Service Industries, Transport (Freight) and Storage Subdivision Group and Class Indexes	6423.0 - table 5
6427.0 - table 46	Producer Price Indexes for Selected Service Industries, Property and Business Services Subdivision Group and Class Indexes	6423.0 - table 6

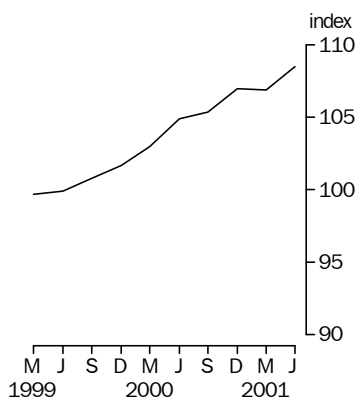


PRODUCER PRICE INDEXES AUSTRALIA

EMBARGO: 11.30AM (CANBERRA TIME) MON 23 JULY 2001

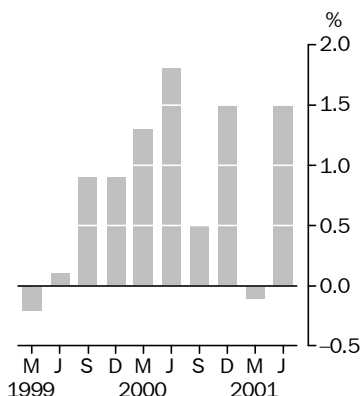
Final Stage

Base: 1998-99 = 100.0



Final Stage

Quarterly % change



- For further information about these and related statistics, contact Lee Taylor on Canberra 02 6252 6377 or the National Information Service on 1300 135 070.

KEY FIGURES

STAGE OF PRODUCTION

	% change Mar Qtr 2001 to Jun Qtr 2001	% change Jun Qtr 2000 to Jun Qtr 2001
Final (Stage 3) commodities (excl exports)	1.5	3.4
Domestic	1.0	2.2
Imports	3.8	8.8
Intermediate (Stage 2) commodities	2.4	5.2
Domestic	2.0	4.4
Imports	4.6	10.1
Preliminary (Stage 1) commodities	2.3	5.5
Domestic	1.9	4.7
Imports	5.0	11.0

KEY POINTS

FINAL (STAGE 3) COMMODITIES

- The final (Stage 3) index rose by 1.5% in the June quarter due to a moderate increase in the domestic index and larger increases in the prices of imported commodities.
- The domestic final (Stage 3) index rose 1.0%, mostly due to price increases for meat and meat products, and refined petroleum products.
- The final (Stage 3) imports index rose 3.8%, with increases recorded for most imported commodities due to the fall in value of the Australian dollar in the June quarter.

INTERMEDIATE (STAGE 2) COMMODITIES

- The intermediate (Stage 2) index rose by 2.4% in the June quarter, due to rises in the prices of both domestically produced and imported commodities.
- The domestic component of the intermediate (Stage 2) index rose 2.0%, mainly due to increases in prices of sheep and beef cattle, petroleum products and television advertising services.
- The intermediate (Stage 2) imports index rose 4.6%, mostly due to price rises for crude oil, petroleum products, basic chemical products, motor vehicle parts and industrial machinery & equipment.

PRELIMINARY (STAGE 1) COMMODITIES

- The preliminary (Stage 1) index rose 2.3% in the June quarter, due to rises in the prices of both domestically produced and imported commodities.
- The preliminary (Stage 1) domestic index rose 1.9%, mainly due to price rises for sheep and beef cattle, crude oil, petroleum products and television advertising services.
- The imported component of the preliminary (Stage 1) index rose 5.0%, mostly due to price rises for crude oil, petroleum products and basic chemical products.

NOTES

FORTHCOMING ISSUES

ISSUE (Quarter)	RELEASE DATE
September 2001	22 October 2001
December 2001	21 January 2002

NEW ISSUE

This is the first issue of this quarterly publication, which replaces the following publications: *Price Index of Materials Used in Building Other than House Building, Six State Capital Cities* (Cat no. 6407.0); *Price Index of Materials Used in House Building, Six State Capital Cities* (Cat no. 6408.0); *Price Indexes of Copper Materials, Australia* (Cat no. 6410.0); *Price Indexes of Materials Used in Manufacturing Industries, Australia* (Cat no. 6411.0); *Price Indexes of Materials Used in Coal Mining, Australia* (Cat no. 6415.0); *Price Indexes of Articles Produced by Manufacturing Industries, Australia* (Cat no. 6412.0); *Producer Price Indexes for Selected Service Industries, Australia* (Cat no. 6423.0); and *Stage of Production Producer Price Indexes, Australia* (Cat no. 6426.0).

This publication has integrated key series from these former publications to present an economy wide framework for producer price indexes, with the Stage of Production (SOP) indexes as the headline indicators. Not all tables from the previous catalogues are produced in this issue; however they are available on AusStats or can be obtained by contacting the National Information Service on 1300 135 070. A concordance between tables in the old and new publications is also available with these services.

Contained in this publication is a new price index for the output of the building industry (table 16), which is a result of ongoing work by the ABS in developing producer price indexes for the construction industry. Also, the price indexes of copper materials used in the manufacture of electronic equipment (table 15); and materials used in coal mining (table 21), have been re-referenced to a base of 1989-90 = 100.0.

The domestic component and the total index for the SOP Preliminary (Stage 1) series have been revised in this issue.

For enquiries specifically related to this new publication and those it has replaced, please contact Lee Taylor on 1800 155 106.

RELATED STATISTICS

For more information about statistics in this publication and about other 'ABS data available on request', contact Lee Taylor on (02) 6252 6377, or email <lee.taylor@abs.gov.au>.

ABBREVIATIONS

- ANZSIC Australian and New Zealand Standard Industrial Classification
- n.e.c. not elsewhere classified
- n.e.s. not elsewhere specified
- SOP Stage of Production

Dennis Trewin
Australian Statistician

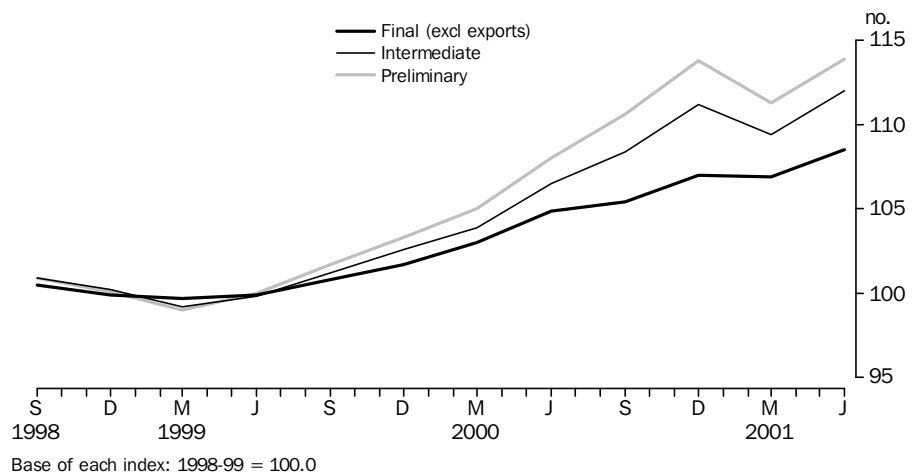
COMMENTARY

STAGE OF PRODUCTION OVERVIEW

Each of the stage of production indexes recorded increases in June quarter 2001, reversing the decreases recorded for the March quarter. The largest increase was for intermediate commodities (2.4%), followed by preliminary commodities (2.3%) and final commodities (1.5%). Increases in prices for both domestic and imported commodities were evident in each stage of production, with imports having a greater upward impact on the indexes in general due to price rises being recorded for the majority of imported commodities. Large price rises in the manufacturing sector exerted significant influence on each of the stage of production indexes, and price increases for some business services had an impact on the intermediate (Stage 2) and preliminary (Stage 1) indexes.

For final commodities, price increases for petroleum products and meat products were the most significant contributors to the change in the index. Other commodities with notable increases were other food and tobacco products, motor vehicles and industrial machinery & equipment. A small decrease in prices for building construction had a small negative influence on the June quarter final commodities index. Increases in the intermediate and preliminary stage of production indexes were mostly due to price rises for crude oil, petroleum products, sheep and beef cattle, imported motor vehicle parts, imported industrial equipment & machinery, imported basic chemicals and television advertising services.

COMPARISON OF SOP INDEXES



MANUFACTURING INDUSTRIES PRODUCER PRICE INDEXES

The price indexes for both the inputs and outputs of manufacturing industries rose substantially in the June quarter 2001, reversing the falls in the March quarter and re-establishing the pattern of strong growth in prices evident since the middle of 1999. The June quarter rise in prices for materials used in manufacturing industries was 5.7%, the highest increase since December quarter 1990. This reflected large increases in prices for both domestically sourced (6.0%) and imported (5.3%) materials. This strong quarterly growth contributed to an increase in the index of 11.5% through the year to June quarter 2001. The growth in prices for articles produced by manufacturing industries was not quite as strong as for materials used, increasing by 2.3% in the June quarter and by 5.6% through the year to June quarter 2001.

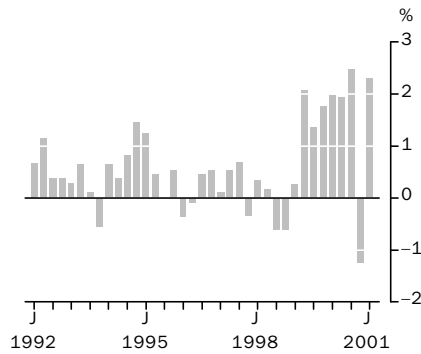
The increase in the world price for crude oil during the June quarter was the main driver of the increases in both indexes, affecting the prices paid for domestically sourced and

COMMENTARY *continued*

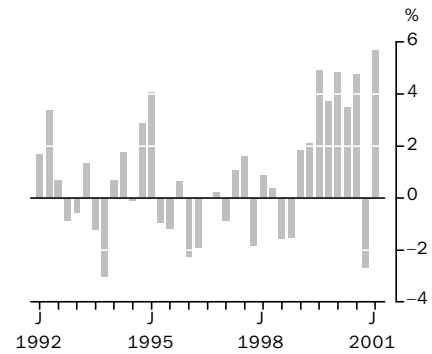
MANUFACTURING
INDUSTRIES PRODUCER
PRICE INDEXES *continued*

imported crude oil, and the prices received for associated manufacturing outputs (refined petroleum products). Also contributing significantly to both indexes rise were continued price increases for sheep and beef cattle for manufacturing materials used, and manufactured meat products for manufacturing articles produced. Other materials used by manufacturing industries with noticeable price rises were imported inorganic chemicals, other chemical products and milk.

ARTICLES PRODUCED BY MANUFACTURING INDUSTRIES, all groups
Quarterly % change



MATERIALS USED IN MANUFACTURING INDUSTRIES, all groups
Quarterly % change



NB: Scales for the above graphs differ due to large historical movements in the Materials Used in Manufacturing Industries series

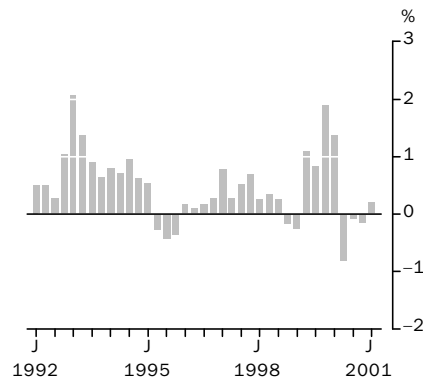
CONSTRUCTION
INDUSTRIES PRODUCER
PRICE INDEXES

The price indexes for materials used in house building, and materials used in other than house building, both showed small increases, of 0.2% and 0.4% respectively, for the June quarter 2001. For materials used in house building, the main drivers of the index increase were higher prices for aluminium windows and doors (due to a flow on of recent world price increases for aluminium and glass) and plastic pipes and fittings (influenced by higher oil prices in the last year). Offsetting these increases were price decreases in most cities for structural timber and ready mixed concrete, caused by a lack of demand and competition. There was a small variation in index changes across the State capitals, ranging from a -0.2% fall in Brisbane to a 0.6% rise in Hobart. For materials used in other than house building, aluminium windows and glass products were also the main drivers of the index increase, together with higher prices for elevators, escalators & travelators, ceramic sanitaryware, structural steel and builders' hardware. Offsetting these increases to some extent were price falls in most cities for ready mixed concrete and non-ferrous pipes and fittings. There was a small variation in index changes across the State capitals, ranging from a -0.1% fall in Hobart to a 0.7% rise in Melbourne.

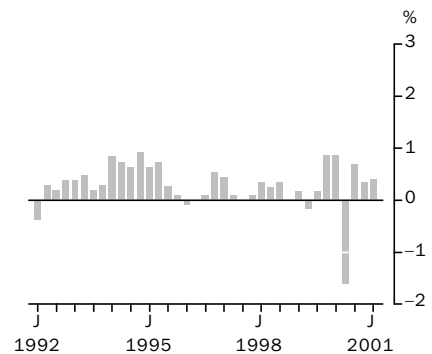
COMMENTARY *continued*

CONSTRUCTION
INDUSTRIES PRODUCER
PRICE INDEXES *continued*

MATERIALS USED IN HOUSE BUILDING
ALL GROUPS, Quarterly % change

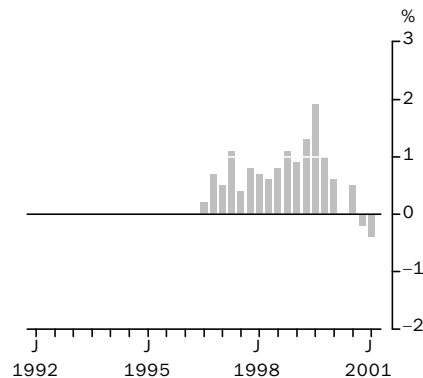


MATERIALS USED IN BUILDING OTHER
THAN HOUSE BUILDING: ALL GROUPS,
Quarterly % change



The price index for the output of the building industry decreased by -0.4% in the June quarter, and by -0.1% in the year to June quarter 2001. Ongoing low demand for buildings and greater competition between builders for the diminishing work were the main reasons for the depressed prices. The decrease in building prices has been more evident in New South Wales and Queensland than in other parts of Australia.

OUTPUT OF BUILDING INDUSTRIES:
ALL GROUPS, Quarterly % change



SERVICE INDUSTRIES
PRODUCER PRICE
INDEXES

The property and business services industries price index increased by 1.2% in the June quarter, and by 5.3% through the year to June quarter 2001. The prices for property services continued their pattern of strong growth, with a 1.1% increase for the June quarter contributing to a 6.8% increase through the year to June quarter 2001. Driving this quarter's increase in the property services index was real estate agents' services, which had an increase of 1.6% due to the current strong growth in prices for established houses. This was offset somewhat by a decrease in prices for machinery and equipment hire of -0.4% , and slower growth in prices for commercial property operators' and developers' services of 0.5%. The business services index reversed the March quarter fall of -0.5% with an increase of 1.4% for the June quarter, leading to an increase of 3.3% through the year to June quarter 2001. The primary cause of the June quarter increase in the index was price rises for television advertising services which increased by 24.5%. This reflects the extreme seasonality of this component associated with television ratings periods, with the June quarter price increase reversing the -19.4% decrease recorded in

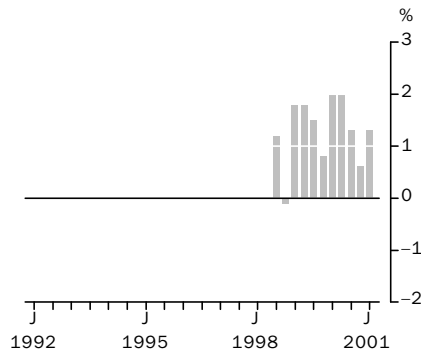
COMMENTARY *continued*

SERVICE INDUSTRIES
PRODUCER PRICE
INDEXES *continued*

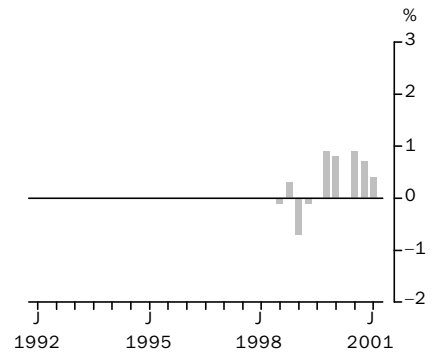
the March quarter. Small increases were recorded for most other business services, the largest being for accounting services (1.0%) and secretarial services (0.9%) due to increased demand and higher input labour costs.

The transport (freight) and storage industries index recorded an increase of 0.4% in the June quarter and 2.0% through the year to June quarter 2001. Increases in the price of water transport (1.0%), rail transport (0.5%) and road transport (0.4%) were the main drivers of the increase, mostly due to passing on increases in fuel prices in newly negotiated contracts. A surcharge to account for the lower Australian dollar has also been introduced by some water transport companies. Price decreases for air and space transport (-0.1%) and services to transport (-0.2%) mostly resulted from lower demand for imports and associated competition.

PROPERTY AND BUSINESS SERVICES
INDUSTRIES: ALL GROUPS,
Quarterly % change



TRANSPORT (FREIGHT) AND STORAGE
INDUSTRIES: ALL GROUPS,
Quarterly % change



LIST OF TABLES

page

STAGE OF PRODUCTION PRODUCER PRICE INDEXES

1	Index numbers by stage and source	10
2	Percentage change by stage and source	11
3	Final commodities by source and destination	12
4	Percentage change, final commodities by source and destination	13
5	Contribution to change in final commodities index by industry and source	14
6	Contribution to change in domestic final commodities index by industry and destination	15
7	Contribution to change in imported final commodities index by industry and destination	16
8	Contribution to change in intermediate commodities index by industry and source	17
9	Contribution to change in preliminary commodities index by industry and source	19

MANUFACTURING INDUSTRIES PRODUCER PRICE INDEXES

10	Articles produced by manufacturing industries, division index numbers and percentage changes	20
11	Articles produced by manufacturing industries, subdivision and group index numbers	21
12	Materials used in manufacturing industries, division index numbers	23
13	Materials used in manufacturing industries, division percentage changes	24
14	Materials used in manufacturing industries, subdivision and group index numbers	25
15	Copper materials used in the manufacture of electrical equipment, index numbers and percentage changes	27

CONSTRUCTION INDUSTRIES PRODUCER PRICE INDEXES

16	Output of the building industry, index numbers and percentage changes	28
17	Materials used in house building, index numbers by state capital city	29
18	Materials used in house building, percentage changes by state capital city	30
19	Materials used in building other than house building, index numbers by state capital city	31
20	Materials used in building other than house building, percentage changes by state capital city	32

MINING INDUSTRIES PRODUCER PRICE INDEXES

21	Materials used in coal mining, index numbers and percentage changes	33
-----------	---	----

SERVICE INDUSTRIES PRODUCER PRICE INDEXES

22	Output of transport (freight) and storage industries, division index numbers and percentage changes	34
-----------	---	----

LIST OF TABLES *continued*

23	Output of transport (freight) and storage industries, subdivision index numbers	35
24	Output of property and business services industries, division index numbers and percentage changes	36
25	Output of property and business services industries, subdivision and group index numbers	37

ADDITIONAL TABLES AVAILABLE ON AUSSTATS

26	Stage of production, index numbers, final commodities by source and destination, including exports	
27	Stage of production, percentage change, final commodities by source and destination, including exports	
28	Price indexes of articles produced by manufacturing industries, contribution of subdivisions and groups	
29	Price index of materials used in manufacturing industries, contribution of materials by ANZSIC industry of origin	
30	Price index of materials used in manufacturing industries, indexes of metallic materials used in the fabricated metal products industry	
31	Price index of materials used in house building, six state capital cities, contribution to all groups index	
32	Price index of materials used in house building, six state capital cities, by materials group	
33	Price index of materials used in building other than house building, six state capital cities, all groups index, contribution of major building materials	
34	Price index of materials used in building other than house building, six state capital cities, selected ANZSIC groups, index numbers	
35	Price index of materials used in building other than house building, six state capital cities, selected building materials, index numbers	
36	Price index of materials used in building other than house building, six state capital cities, selected major building materials, index numbers, Sydney and Melbourne	
37	Price index of materials used in building other than house building, six state capital cities, selected major building materials, index numbers, Brisbane and Adelaide	
38	Price index of materials used in building other than house building, six state capital cities, selected major building materials, index numbers, Perth and Hobart	
39	Price index of materials used in building other than house building, six state capital cities, special series, index numbers, weighted average of six state capital cities	
40	Price index of materials used in building other than house building, six state capital cities, special series, index numbers, Sydney and Melbourne	
41	Price index of materials used in building other than house building, six state capital cities, special series, index numbers, Brisbane and Adelaide	
42	Price index of materials used in building other than house building, six state capital cities, special series, index numbers, Perth and Hobart	

LIST OF TABLES *continued*

- 43** Producer price indexes for selected service industries, transport (freight) and storage division index, subdivision and group contributions
- 44** Producer price indexes for selected service industries, property and business services division, subdivision and group contributions
- 45** Producer price indexes for selected service industries, transport (freight) and storage subdivision group and class indexes
- 46** Producer price indexes for selected service industries, property and business services subdivision group and class indexes

STAGE OF PRODUCTION (a): Index numbers

Period	PRELIMINARY			INTERMEDIATE			FINAL (b)		
	Domestic ^r	Imports	Total ^r	Domestic	Imports	Total	Domestic	Imports	Total
1998-99	100.0	100.0	100.0	100.0	100.0	100.0	100.0	100.0	100.0
1999-2000	104.1	107.1	104.5	103.4	104.4	103.6	104.3	95.7	102.6
2000-01	110.3	126.1	112.4	108.9	119.7	110.3	107.7	104.0	107.0
1998									
September	100.6	103.3	100.9	100.6	102.8	100.9	99.7	103.5	100.5
December	100.0	101.0	100.1	100.0	101.2	100.2	99.5	101.7	99.9
1999									
March	99.2	97.6	99.0	99.3	98.4	99.2	99.9	99.2	99.7
June	100.3	98.2	100.0	100.1	97.6	99.8	100.9	95.6	99.9
September	102.0	100.1	101.7	101.5	99.1	101.2	102.4	94.2	100.8
December	103.3	103.6	103.3	102.7	101.9	102.6	103.3	95.0	101.7
2000									
March	104.5	108.6	105.0	103.7	105.1	103.9	105.0	94.7	103.0
June	106.7	116.2	108.0	105.7	111.6	106.5	106.4	98.9	104.9
September	109.0	121.0	110.6	107.5	114.4	108.4	106.8	99.5	105.4
December	111.0	131.7	113.8	109.3	124.1	111.2	107.5	105.1	107.0
2001									
March	109.6	122.8	111.3	108.2	117.5	109.4	107.6	103.7	106.9
June	111.7	129.0	113.9	110.4	122.9	112.0	108.7	107.6	108.5

^r revised

(a) Reference base of each index: 1998-99 = 100.0.

(b) Excluding exports.

STAGE OF PRODUCTION: Percentage change

Period	PRELIMINARY			INTERMEDIATE			FINAL(a)		
	Domestic ^r	Imports	Total ^r	Domestic	Imports	Total	Domestic	Imports	Total
PERCENTAGE CHANGE FROM PREVIOUS YEAR									
1998-99
1999-2000	4.1	7.1	4.5	3.4	4.4	3.6	4.3	-4.3	2.6
2000-01	6.0	17.7	7.6	5.3	14.7	6.5	3.3	8.7	4.3
PERCENTAGE CHANGE FROM PREVIOUS QUARTER									
1998									
September
December	-0.6	-2.2	-0.8	-0.6	-1.6	-0.7	-0.2	-1.7	-0.6
1999									
March	-0.8	-3.4	-1.1	-0.7	-2.8	-1.0	0.4	-2.5	-0.2
June	1.1	0.6	1.0	0.8	-0.8	0.6	1.0	-3.6	0.2
September	1.7	1.9	1.7	1.4	1.5	1.4	1.5	-1.5	0.9
December	1.3	3.5	1.6	1.2	2.8	1.4	0.9	0.8	0.9
2000									
March	1.2	4.8	1.6	1.0	3.1	1.3	1.6	-0.3	1.3
June	2.1	7.0	2.9	1.9	6.2	2.5	1.3	4.4	1.8
September	2.2	4.1	2.4	1.7	2.5	1.8	0.4	0.6	0.5
December	1.8	8.8	2.9	1.7	8.5	2.6	0.7	5.6	1.5
2001									
March	-1.3	-6.8	-2.2	-1.0	-5.3	-1.6	0.1	-1.3	-0.1
June	1.9	5.0	2.3	2.0	4.6	2.4	1.0	3.8	1.5
PERCENTAGE CHANGE FROM CORRESPONDING QUARTER OF PREVIOUS YEAR									
1998									
September
December
1999									
March
June
September	1.4	-3.1	0.8	0.9	-3.6	0.3	2.7	-9.0	0.3
December	3.3	2.6	3.2	2.7	0.7	2.4	3.8	-6.6	1.8
2000									
March	5.3	11.3	6.1	4.4	6.8	4.7	5.1	-4.5	3.3
June	6.4	18.3	8.0	5.6	14.3	6.7	5.5	3.5	5.0
September	6.9	20.9	8.8	5.9	15.4	7.1	4.3	5.6	4.6
December	7.5	27.1	10.2	6.4	21.8	8.4	4.1	10.6	5.2
2001									
March	4.9	13.1	6.0	4.3	11.8	5.3	2.5	9.5	3.8
June	4.7	11.0	5.5	4.4	10.1	5.2	2.2	8.8	3.4

r revised

.. not applicable

(a) Excluding exports.

STAGE OF PRODUCTION (a): Final Commodities

Period	DOMESTIC(b)			IMPORTS			TOTAL(b)		
	Consumer	Capital	Total	Consumer	Capital	Total	Consumer	Capital	Total
1998-99	100.0	100.0	100.0	100.0	100.0	100.0	100.0	100.0	100.0
1999-2000	103.6	104.9	104.3	96.6	94.6	95.7	102.2	103.0	102.6
2000-01	107.2	108.2	107.7	105.7	102.0	104.0	106.9	107.0	107.0
1998									
September	100.5	98.9	99.7	102.9	104.1	103.5	101.0	99.9	100.5
December	99.6	99.4	99.5	101.2	102.2	101.7	99.9	99.9	99.9
1999									
March	99.6	100.1	99.9	99.1	99.4	99.2	99.5	99.9	99.7
June	100.2	101.6	100.9	96.7	94.4	95.6	99.5	100.3	99.9
September	102.2	102.5	102.4	95.2	93.2	94.2	100.8	100.8	100.8
December	102.6	104.1	103.3	95.8	94.0	95.0	101.2	102.2	101.7
2000									
March	104.0	105.9	105.0	95.8	93.4	94.7	102.4	103.6	103.0
June	105.7	107.1	106.4	99.7	97.9	98.9	104.5	105.3	104.9
September	106.2	107.4	106.8	101.4	97.3	99.5	105.3	105.5	105.4
December	106.7	108.3	107.5	106.6	103.3	105.1	106.7	107.4	107.0
2001									
March	106.8	108.5	107.6	105.1	102.1	103.7	106.5	107.3	106.9
June	108.9	108.5	108.7	109.6	105.3	107.6	109.0	107.9	108.5

(a) Reference base of each index: 1998-99 = 100.0.

(b) Excluding exports.

STAGE OF PRODUCTION: Final commodities percentage change

Period	DOMESTIC(a)			IMPORTS			TOTAL(a)		
	Consumer	Capital	Total	Consumer	Capital	Total	Consumer	Capital	Total
PERCENTAGE CHANGE FROM PREVIOUS YEAR									
1998-99
1999-2000	3.6	4.9	4.3	-3.4	-5.4	-4.3	2.2	3.0	2.6
2000-01	3.5	3.1	3.3	9.4	7.8	8.7	4.6	3.9	4.3
PERCENTAGE CHANGE FROM PREVIOUS QUARTER									
1998									
September
December	-0.9	0.5	-0.2	-1.7	-1.8	-1.7	-1.1	—	-0.6
1999									
March	—	0.7	0.4	-2.1	-2.7	-2.5	-0.4	—	-0.2
June	0.6	1.5	1.0	-2.4	-5.0	-3.6	—	0.4	0.2
September	2.0	0.9	1.5	-1.6	-1.3	-1.5	1.3	0.5	0.9
December	0.4	1.6	0.9	0.6	0.9	0.8	0.4	1.4	0.9
2000									
March	1.4	1.7	1.6	—	-0.6	-0.3	1.2	1.4	1.3
June	1.6	1.1	1.3	4.1	4.8	4.4	2.1	1.6	1.8
September	0.5	0.3	0.4	1.7	-0.6	0.6	0.8	0.2	0.5
December	0.5	0.8	0.7	5.1	6.2	5.6	1.3	1.8	1.5
2001									
March	0.1	0.2	0.1	-1.4	-1.2	-1.3	-0.2	-0.1	-0.1
June	2.0	—	1.0	4.3	3.1	3.8	2.3	0.6	1.5
PERCENTAGE CHANGE FROM CORRESPONDING QUARTER OF PREVIOUS YEAR									
1998									
September
December
1999									
March
June
September	1.7	3.6	2.7	-7.5	-10.5	-9.0	-0.2	0.9	0.3
December	3.0	4.7	3.8	-5.3	-8.0	-6.6	1.3	2.3	1.8
2000									
March	4.4	5.8	5.1	-3.3	-6.0	-4.5	2.9	3.7	3.3
June	5.5	5.4	5.5	3.1	3.7	3.5	5.0	5.0	5.0
September	3.9	4.8	4.3	6.5	4.4	5.6	4.5	4.7	4.6
December	4.0	4.0	4.1	11.3	9.9	10.6	5.4	5.1	5.2
2001									
March	2.7	2.5	2.5	9.7	9.3	9.5	4.0	3.6	3.8
June	3.0	1.3	2.2	9.9	7.6	8.8	4.3	2.5	3.4

.. not applicable

— nil or rounded to zero (including null cells)

(a) Excluding exports.

STAGE OF PRODUCTION (a): Final commodities index points change

ANZSIC	DOMESTIC(b)			IMPORTS			TOTAL(b)			
	Mar Qtr 2001	Jun Qtr 2001	Change	Mar Qtr 2001	Jun Qtr 2001	Change	Mar Qtr 2001	Jun Qtr 2001	Change	
211	Meat & meat product mfg	5.22	5.59	0.37	4.23	4.53	0.30
212	Dairy product mfg	3.92	3.98	0.06	0.73	0.76	0.03	3.31	3.37	0.06
213	Fruit & vegetable processing	2.64	2.66	0.02	2.13	2.16	0.03	2.54	2.56	0.02
215	Flour mill & cereal food mfg	1.38	1.39	0.01	1.12	1.13	0.01
216	Bakery product mfg	3.25	3.24	-0.01	0.78	0.76	-0.02	2.78	2.77	-0.01
217,219	Other food & tobacco products	1.98	2.08	0.10	7.91	8.29	0.38	3.11	3.26	0.15
218	Beverage & malt mfg	3.37	3.39	0.02	2.73	2.75	0.02
221	Textile fibre, yarn & woven fabric mfg	0.39	0.39	—	0.80	0.84	0.04	0.47	0.47	—
222	Textile product mfg	1.04	1.04	—	0.62	0.64	0.02	0.96	0.96	—
223	Knitting mills	0.46	0.46	—	0.93	0.99	0.06	0.55	0.56	0.01
224-225	Clothing & footwear mfg	3.49	3.48	-0.01	8.19	8.65	0.46	4.38	4.46	0.08
226	Leather & leather product mfg	1.52	1.64	0.12	0.29	0.31	0.02
241	Printing & services to printing	0.61	0.62	0.01	—	—	—	0.49	0.50	0.01
242	Publishing	1.73	1.73	—	1.90	1.90	—	1.76	1.77	0.01
243	Recorded media mfg & publishing	0.21	0.21	—	1.64	1.75	0.11	0.48	0.50	0.02
251	Petroleum refining	3.87	4.31	0.44	1.76	1.94	0.18	3.47	3.86	0.39
254	Other chemical product mfg	3.62	3.63	0.01	2.33	2.37	0.04	3.38	3.39	0.01
255	Rubber product mfg	0.62	0.63	0.01	0.12	0.12	—
256	Plastic product mfg	1.23	1.26	0.03	1.33	1.42	0.09	1.25	1.29	0.04
275	Sheet metal product mfg	0.32	0.32	—	0.26	0.26	—
276	Fabricated metal product mfg	0.11	0.11	—	0.09	0.09	—
281	Motor vehicle & part mfg	6.38	6.44	0.06	21.77	22.69	0.92	9.30	9.52	0.22
282	Other transport equipment mfg	3.06	3.25	0.19	0.58	0.62	0.04
283	Photographic & scientific equipment mfg	5.41	5.69	0.28	1.03	1.08	0.05
284	Electronic equipment mfg	0.94	0.97	0.03	14.85	14.88	0.03	3.58	3.60	0.02
285	Electrical equipment & household appliance mfg	1.78	1.77	-0.01	3.56	3.62	0.06	2.12	2.12	—
286	Industrial machinery & equipment mfg	1.43	1.44	0.01	16.52	17.12	0.60	4.29	4.42	0.13
291	Prefabricated building mfg	0.30	0.30	—	0.24	0.24	—
292	Furniture mfg	1.40	1.40	—	1.14	1.14	—
294	Other mfg	5.38	5.61	0.23	1.02	1.06	0.04
36-37	Electricity, gas & water	7.69	7.66	-0.03	6.23	6.21	-0.02
411	Building construction	34.95	34.84	-0.11	28.32	28.24	-0.08
412	Non-building construction	2.69	2.69	—	2.18	2.18	—
611	Road freight transport	4.03	4.05	0.02	3.27	3.28	0.01
772	Real estate agents	1.61	1.63	0.02	1.30	1.32	0.02
782	Technical services	0.81	0.81	—	0.66	0.66	—
783	Computer services	4.25	4.28	0.03	3.45	3.47	0.02
784	Legal & accounting services	0.53	0.53	—	0.43	0.43	—
	Total	107.6	108.7	1.1	103.7	107.6	3.9	106.9	108.5	1.6

.. not applicable

(a) Reference base of each index: 1998-99 = 100.0.

— nil or rounded to zero (including null cells)

(b) Excluding exports.

STAGE OF PRODUCTION (a): Domestic final commodities index points change

ANZSIC	CONSUMER			CAPITAL			TOTAL			
	Mar Qtr	Jun Qtr	Change	Mar Qtr	Jun Qtr	Change	Mar Qtr	Jun Qtr	Change	
	2001	2001		2001	2001		2001	2001		2001
211	Meat & meat product mfg	10.10	10.82	0.72	5.22	5.59	0.37
212	Dairy product mfg	7.57	7.70	0.13	3.92	3.98	0.06
213	Fruit & vegetable processing	5.10	5.14	0.04	2.64	2.66	0.02
215	Flour mill & cereal food mfg	2.66	2.69	0.03	1.38	1.39	0.01
216	Bakery product mfg	6.29	6.27	-0.02	3.25	3.24	-0.01
217,219	Other food & tobacco products	3.83	4.03	0.20	1.98	2.08	0.10
218	Beverage & malt mfg	6.53	6.56	0.03	3.37	3.39	0.02
221	Textile fibre, yarn & woven fabric mfg	0.75	0.75	—	0.39	0.39	—
222	Textile product mfg	2.02	2.01	-0.01	1.04	1.04	—
223	Knitting mills	0.88	0.88	—	0.46	0.46	—
224-225	Clothing & footwear mfg	6.76	6.73	-0.03	3.49	3.48	-0.01
241	Printing & services to printing	1.18	1.20	0.02	0.61	0.62	0.01
242	Publishing	3.34	3.35	0.01	1.73	1.73	—
243	Recorded media mfg & publishing	0.40	0.40	—	0.21	0.21	—
251	Petroleum refining	7.48	8.34	0.86	3.87	4.31	0.44
254	Other chemical product mfg	7.01	7.02	0.01	3.62	3.63	0.01
256	Plastic product mfg	2.38	2.44	0.06	1.23	1.26	0.03
275	Sheet metal product mfg	0.66	0.66	—	0.32	0.32	—
276	Fabricated metal product mfg	0.23	0.23	—	0.11	0.11	—
281	Motor vehicle & part mfg	6.06	6.12	0.06	6.73	6.78	0.05	6.38	6.44	0.06
284	Electronic equipment mfg	0.94	0.94	—	0.95	0.99	0.04	0.94	0.97	0.03
285	Electrical equipment & household appliance mfg	2.86	2.85	-0.01	0.63	0.63	—	1.78	1.77	-0.01
286	Industrial machinery & equipment mfg	2.97	2.99	0.02	1.43	1.44	0.01
291	Prefabricated building mfg	0.61	0.62	0.01	0.30	0.30	—
292	Furniture mfg	2.90	2.90	—	1.40	1.40	—
36-37	Electricity, gas & water	14.88	14.82	-0.06	7.69	7.66	-0.03
411	Building construction	72.36	72.14	-0.22	34.95	34.84	-0.11
412	Non-building construction	5.58	5.57	-0.01	2.69	2.69	—
611	Road freight transport	7.80	7.84	0.04	4.03	4.05	0.02
772	Real estate agents	3.33	3.38	0.05	1.61	1.63	0.02
782	Technical services	1.69	1.69	—	0.81	0.81	—
783	Computer services	8.80	8.86	0.06	4.25	4.28	0.03
784	Legal & accounting services	1.10	1.10	—	0.53	0.53	—
Total		106.8	108.9	2.1	108.5	108.5	—	107.6	108.7	1.1

.. not applicable

(a) Reference base of each index: 1998-99 = 100.0.

— nil or rounded to zero (including null cells)

STAGE OF PRODUCTION (a): Imported final commodities index points change

ANZSIC	CONSUMER			CAPITAL			TOTAL			
	Mar Qtr 2001	Jun Qtr 2001	Change	Mar Qtr 2001	Jun Qtr 2001	Change	Mar Qtr 2001	Jun Qtr 2001	Change	
212	Dairy product mfg	1.36	1.43	0.07	0.73	0.76	0.03
213	Fruit & vegetable processing	3.99	4.05	0.06	2.13	2.16	0.03
216	Bakery product mfg	1.46	1.43	-0.03	0.78	0.76	-0.02
217,219	Other food & tobacco products	14.82	15.53	0.71	7.91	8.29	0.38
221	Textile fibre, yarn & woven fabric mfg	1.49	1.57	0.08	0.80	0.84	0.04
222	Textile product mfg	1.16	1.20	0.04	0.62	0.64	0.02
223	Knitting mills	1.75	1.85	0.10	0.93	0.99	0.06
224-225	Clothing & footwear mfg	15.36	16.22	0.86	8.19	8.65	0.46
226	Leather & leather product mfg	2.84	3.08	0.24	1.52	1.64	0.12
242	Publishing	3.57	3.57	—	1.90	1.90	—
243	Recorded media mfg & publishing	3.08	3.29	0.21	1.64	1.75	0.11
251	Petroleum refining	3.31	3.64	0.33	1.76	1.94	0.18
254	Other chemical product mfg	4.37	4.44	0.07	2.33	2.37	0.04
255	Rubber product mfg	1.16	1.18	0.02	0.62	0.63	0.01
256	Plastic product mfg	2.50	2.66	0.16	1.33	1.42	0.09
281	Motor vehicle & part mfg	15.53	16.32	0.79	28.90	29.99	1.09	21.77	22.69	0.92
282	Other transport equipment mfg	6.56	6.96	0.40	3.06	3.25	0.19
283	Photographic & scientific equipment mfg	4.13	4.31	0.18	6.88	7.26	0.38	5.41	5.69	0.28
284	Electronic equipment mfg	6.54	6.57	0.03	24.36	24.38	0.02	14.85	14.88	0.03
285	Electrical equipment & household appliance mfg	6.67	6.78	0.11	3.56	3.62	0.06
286	Industrial machinery & equipment mfg	—	—	—	35.42	36.71	1.29	16.52	17.12	0.60
294	Other mfg	10.08	10.51	0.43	5.38	5.61	0.23
	Total	105.1	109.6	4.5	102.1	105.3	3.2	103.7	107.6	3.9

.. not applicable

— nil or rounded to zero (including null cells)

(a) Reference base of each index: 1998-99 = 100.0.

STAGE OF PRODUCTION (a): Intermediate commodities index points change

ANZSIC		DOMESTIC			IMPORTS			TOTAL		
		Mar Qtr	Jun Qtr	Change	Mar Qtr	Jun Qtr	Change	Mar Qtr	Jun Qtr	Change
		2001	2001		2001	2001				
012	Grain, sheep & beef cattle farming	4.23	4.67	0.44	3.70	4.08	0.38
013	Dairy cattle farming	1.53	1.67	0.14	1.34	1.46	0.12
016	Other crop growing	1.39	1.49	0.10	1.22	1.30	0.08
021	Services to agriculture	0.51	0.63	0.12	0.45	0.55	0.10
110	Coal mining	0.76	0.77	0.01	0.67	0.67	—
120	Oil & gas extraction	2.24	2.39	0.15	10.15	10.92	0.77	3.23	3.46	0.23
131	Metal ore mining	1.46	1.51	0.05	1.28	1.32	0.04
14-15	Other mining activities	0.91	0.92	0.01	0.80	0.80	—
211	Meat & meat product mfg	1.67	1.77	0.10	1.46	1.55	0.09
212	Dairy product mfg	1.01	1.02	0.01	0.88	0.89	0.01
215	Flour mill & cereal food mfg	0.80	0.81	0.01	0.70	0.71	0.01
216	Bakery product mfg	0.32	0.32	—	0.28	0.28	—
217	Other food mfg	1.12	1.16	0.04	0.98	1.01	0.03
218	Beverage & malt mfg	1.58	1.59	0.01	1.39	1.39	—
221	Textile fibre, yarn & woven fabric mfg	1.98	1.98	—	7.46	7.68	0.22	2.66	2.69	0.03
222	Textile product mfg	1.63	1.69	0.06	0.20	0.21	0.01
224	Clothing mfg	0.72	0.75	0.03	0.09	0.09	—
226	Leather & leather product mfg	0.67	0.69	0.02	0.08	0.09	0.01
231	Log sawmilling & timber dressing	0.88	0.85	-0.03	2.17	2.13	-0.04	1.04	1.01	-0.03
232	Other wood product mfg	1.93	1.94	0.01	1.92	1.96	0.04	1.93	1.94	0.01
233	Paper & paper product mfg	1.28	1.28	—	3.69	3.61	-0.08	1.58	1.57	-0.01
241	Printing & services to printing	2.68	2.73	0.05	2.34	2.39	0.05
242	Publishing	2.80	2.80	—	2.45	2.45	—
251	Petroleum refining	3.26	3.54	0.28	6.29	7.56	1.27	3.64	4.04	0.40
253	Basic chemical mfg	1.04	1.06	0.02	7.51	8.32	0.81	1.85	1.97	0.12
254	Other chemical product mfg	1.19	1.20	0.01	4.46	4.56	0.10	1.60	1.62	0.02
255	Rubber product mfg	0.46	0.46	—	2.77	2.82	0.05	0.75	0.75	—
256	Plastic product mfg	2.08	2.11	0.03	4.76	4.95	0.19	2.41	2.46	0.05
261	Glass & glass product mfg	0.36	0.36	—	0.32	0.31	-0.01
262	Ceramic mfg	0.75	0.75	—	0.66	0.66	—
263	Cement, lime, plaster & concrete product mfg	2.77	2.78	0.01	2.42	2.43	0.01
264	Non-metallic mineral product mfg n.e.c.	0.31	0.30	-0.01	0.27	0.27	—
271	Iron & steel mfg	2.44	2.45	0.01	4.12	4.15	0.03	2.65	2.66	0.01
272	Basic non-ferrous metal mfg	1.34	1.34	—	1.17	1.17	—
273	Non-ferrous basic metal product mfg	0.35	0.37	0.02	2.35	2.38	0.03	0.60	0.62	0.02
274	Structural metal product mfg	2.32	2.35	0.03	2.03	2.05	0.02
275	Sheet metal product mfg	1.11	1.10	-0.01	0.97	0.96	-0.01
276	Fabricated metal product mfg	1.50	1.50	—	5.14	5.34	0.20	1.95	1.98	0.03
281	Motor vehicle & part mfg	2.55	2.56	0.01	11.85	12.30	0.45	3.71	3.78	0.07
282	Other transport equipment mfg	0.48	0.51	0.03	0.42	0.44	0.02
283	Photographic & scientific equipment mfg	0.35	0.36	0.01	7.52	7.88	0.36	1.24	1.30	0.06
284	Electronic equipment mfg	1.05	1.06	0.01	10.54	10.72	0.18	2.24	2.27	0.03
285	Electrical equipment & household appliance mfg	1.22	1.23	0.01	7.79	7.87	0.08	2.04	2.06	0.02
286	Industrial machinery & equipment mfg	1.25	1.29	0.04	14.03	14.66	0.63	2.85	2.96	0.11
36-37	Electricity, gas & water	3.83	3.92	0.09	3.35	3.43	0.08
611	Road freight transport	5.53	5.55	0.02	4.83	4.85	0.02
620	Rail transport	1.14	1.14	—	1.00	1.00	—
640	Air & space transport	1.98	1.98	—	1.74	1.73	-0.01
650	Other transport	0.25	0.25	—	0.22	0.22	—
662	Services to water transport	0.35	0.35	—	0.31	0.31	—
664	Other services to transport	1.59	1.59	—	1.40	1.39	-0.01
670	Storage	1.49	1.49	—	1.30	1.30	—
771	Property operators & developers	10.53	10.59	0.06	9.22	9.26	0.04
774	Machinery & equipment hiring & leasing	1.79	1.78	-0.01	1.56	1.55	-0.01
782	Technical services	2.55	2.55	—	2.23	2.23	—
783	Computer services	2.86	2.87	0.01	2.50	2.51	0.01
784	Legal & accounting services	4.90	4.93	0.03	4.29	4.31	0.02

.. not applicable

(a) Reference base of each index: 1998-99 = 100.0.

— nil or rounded to zero (including null cells)

STAGE OF PRODUCTION (a): Intermediate commodities index points change *continued*

		DOMESTIC			IMPORTS			TOTAL		
ANZSIC		Mar Qtr 2001	Jun Qtr 2001	Change	Mar Qtr 2001	Jun Qtr 2001	Change	Mar Qtr 2001	Jun Qtr 2001	Change
785	Marketing & business management services	6.14	6.53	0.39	5.37	5.71	0.34
786	Other business services	3.93	3.94	0.01	3.44	3.45	0.01
	Total	108.2	110.4	2.2	117.5	122.9	5.4	109.4	112.0	2.6

.. not applicable

(a) Reference base of each index: 1998-99 = 100.0.

STAGE OF PRODUCTION (a): Preliminary commodities index points change

ANZSIC		DOMESTIC			IMPORTS			TOTAL		
		Mar Qtr	Jun Qtr	Change	Mar Qtr	Jun Qtr	Change	Mar Qtr	Jun Qtr	Change
		2001	2001		2001	2001				
012	Grain, sheep & beef cattle farming	3.08	3.35	0.27	2.68	2.91	0.23
013	Dairy cattle farming	0.89	0.96	0.07	0.77	0.84	0.07
016	Other crop growing	1.08	1.15	0.07	0.93	1.00	0.07
021	Services to agriculture	0.96	1.18	0.22	0.84	1.03	0.19
030	Forestry & logging	0.40	0.40	—	0.35	0.35	—
110	Coal mining	1.38	1.39	0.01	1.20	1.21	0.01
120	Oil & gas extraction	4.05	4.32	0.27	17.26	18.57	1.31	5.79	6.20	0.41
131	Metal ore mining	1.28	1.33	0.05	1.11	1.15	0.04
14-15	Other mining activities	1.69	1.69	—	0.87	0.90	0.03	1.58	1.58	—
211	Meat & meat product mfg	0.62	0.66	0.04	0.54	0.57	0.03
212	Dairy product mfg	0.60	0.61	0.01	0.52	0.53	0.01
215	Flour mill & cereal food mfg	0.44	0.44	—	0.38	0.39	0.01
217	Other food mfg	1.05	1.10	0.05	0.91	0.95	0.04
218	Beverage & malt mfg	0.71	0.71	—	0.61	0.62	0.01
221	Textile fibre, yarn & woven fabric mfg	5.09	5.24	0.15	0.67	0.69	0.02
222	Textile product mfg	0.81	0.84	0.03	0.11	0.11	—
231	Log sawmilling & timber dressing	0.85	0.82	-0.03	1.64	1.56	-0.08	0.95	0.92	-0.03
232	Other wood product mfg	0.86	0.87	0.01	0.78	0.80	0.02	0.85	0.86	0.01
233	Paper & paper product mfg	2.12	2.13	0.01	11.37	11.11	-0.26	3.34	3.31	-0.03
241	Printing & services to printing	1.77	1.81	0.04	1.54	1.57	0.03
242	Publishing	2.15	2.15	—	1.86	1.86	—
251	Petroleum refining	3.78	4.10	0.32	6.86	8.25	1.39	4.19	4.65	0.46
253	Basic chemical mfg	2.24	2.27	0.03	15.18	16.82	1.64	3.95	4.19	0.24
254	Other chemical product mfg	1.63	1.63	—	5.38	5.54	0.16	2.12	2.15	0.03
255	Rubber product mfg	2.25	2.29	0.04	0.30	0.30	—
256	Plastic product mfg	1.78	1.81	0.03	3.85	4.01	0.16	2.06	2.10	0.04
261	Glass & glass product mfg	0.38	0.38	—	0.33	0.33	—
262	Ceramic mfg	0.15	0.15	—	0.13	0.13	—
263	Cement, lime, plaster & concrete product mfg	1.20	1.20	—	1.04	1.04	—
264	Non-metallic mineral product mfg n.e.c.	0.23	0.23	—	0.20	0.20	—
271	Iron & steel mfg	3.94	3.96	0.02	6.12	6.16	0.04	4.23	4.25	0.02
272	Basic non-ferrous metal mfg	1.63	1.63	—	1.42	1.41	-0.01
273	Non-ferrous basic metal product mfg	0.43	0.45	0.02	2.62	2.66	0.04	0.72	0.74	0.02
274	Structural metal product mfg	1.29	1.31	0.02	1.12	1.13	0.01
275	Sheet metal product mfg	0.67	0.67	—	0.58	0.58	—
276	Fabricated metal product mfg	1.47	1.47	—	4.62	4.80	0.18	1.88	1.91	0.03
281	Motor vehicle & part mfg	1.75	1.76	0.01	7.65	7.94	0.29	2.53	2.57	0.04
282	Other transport equipment mfg	0.66	0.68	0.02	2.44	2.59	0.15	0.90	0.94	0.04
283	Photographic & scientific equipment mfg	4.02	4.22	0.20	0.53	0.56	0.03
284	Electronic equipment mfg	0.72	0.73	0.01	6.76	6.87	0.11	1.52	1.54	0.02
285	Electrical equipment & household appliance mfg	0.86	0.86	—	5.13	5.18	0.05	1.42	1.43	0.01
286	Industrial machinery & equipment mfg	1.12	1.12	—	12.08	12.62	0.54	2.56	2.64	0.08
36-37	Electricity, gas & water	4.48	4.57	0.09	3.89	3.97	0.08
611	Road freight transport	7.00	7.03	0.03	6.08	6.10	0.02
620	Rail transport	1.65	1.66	0.01	1.43	1.44	0.01
640	Air & space transport	2.09	2.08	-0.01	1.81	1.81	—
662	Services to water transport	0.65	0.65	—	0.57	0.57	—
664	Other services to transport	0.45	0.44	-0.01	0.39	0.39	—
670	Storage	2.75	2.75	—	2.39	2.39	—
771	Property operators & developers	14.04	14.11	0.07	12.19	12.25	0.06
774	Machinery & equipment hiring & leasing	2.38	2.37	-0.01	2.07	2.05	-0.02
782	Technical services	2.19	2.20	0.01	1.90	1.91	0.01
783	Computer services	3.70	3.71	0.01	3.21	3.23	0.02
784	Legal & accounting services	5.07	5.10	0.03	4.41	4.43	0.02
785	Marketing & business management services	6.36	6.76	0.40	5.52	5.87	0.35
786	Other business services	4.73	4.74	0.01	4.10	4.12	0.02
	Total	109.6^r	111.7	2.1	122.8	129.0	6.2	111.3	113.9	2.6

.. not applicable

r revised

— nil or rounded to zero (including null cells)

(a) Reference base of each index: 1998-99 = 100.0.

<i>Period</i>	<i>Index numbers</i>	<i>% change from corresponding quarter of previous year</i>	<i>% change from previous period</i>
1997-98	115.9	..	1.4
1998-99	115.6	..	-0.3
1999-2000	120.6	..	4.3
2000-01	128.5	..	6.6
1996			
September	113.6	0.1	-0.1
December	114.1	0.5	0.4
1997			
March	114.7	0.5	0.5
June	114.8	1.0	0.1
September	115.4	1.6	0.5
December	116.2	1.8	0.7
1998			
March	115.8	1.0	-0.3
June	116.2	1.2	0.3
September	116.4	0.9	0.2
December	115.7	-0.4	-0.6
1999			
March	115.0	-0.7	-0.6
June	115.3	-0.8	0.3
September	117.7	1.1	2.1
December	119.3	3.1	1.4
2000			
March	121.4	5.6	1.8
June	123.8	7.4	2.0
September	126.2	7.2	1.9
December	129.3	8.4	2.5
2001			
March	127.7	5.2	-1.2
June	130.7	5.6	2.3

.. not applicable

(a) Reference base of each index: 1989-90 = 100.0.

<i>Period</i>	<i>Food, beverages and tobacco (21)</i>	<i>Textiles and textile products (221-222)</i>	<i>Knitting mills, clothing, footwear and leather (223-226)</i>	<i>Log sawmilling and other wood products (231-232)</i>	<i>Paper and paper products (233)</i>	<i>Printing, publishing and recorded media (24)</i>	<i>Petroleum and coal products (251-252)</i>	<i>Chemicals (253-254)</i>
1997-98	122.0	104.7	116.5	118.9	110.2	139.2	101.7	110.7
1998-99	122.6	102.9	117.9	121.0	110.4	143.6	86.8	110.8
1999-2000	125.1	103.8	119.5	126.0	111.3	148.9	137.5	111.8
2000-01	131.4	108.6	120.7	130.7	114.9	152.4	190.2	115.8
1996								
September	118.2	103.3	114.0	116.1	111.9	135.6	102.8	111.7
December	118.9	103.1	114.1	116.3	111.6	136.2	113.9	111.0
1997								
March	119.1	103.3	114.4	117.2	111.6	136.4	116.8	111.1
June	119.9	103.9	115.4	117.7	110.9	137.0	106.2	111.3
September	120.7	105.0	116.4	117.6	110.7	138.3	102.4	111.2
December	122.1	105.2	116.3	118.5	110.0	138.2	110.2	110.4
1998								
March	122.5	104.7	116.6	119.6	109.9	140.0	96.5	110.7
June	122.7	103.9	116.8	119.9	110.2	140.2	97.6	110.6
September	123.4	103.6	117.0	120.9	109.9	143.2	90.3	111.0
December	122.8	102.9	117.4	121.2	110.3	144.0	85.1	111.8
1999								
March	122.7	102.8	118.2	121.3	110.6	143.6	79.7	111.0
June	121.4	102.4	119.0	120.7	110.6	143.7	92.2	109.3
September	122.7	102.3	119.3	122.2	112.0	148.3	119.3	109.8
December	124.9	102.1	119.4	123.5	110.8	148.7	125.6	110.5
2000								
March	125.2	103.9	119.8	127.9	110.9	148.8	145.0	112.2
June	127.4	106.7	119.6	130.5	111.5	149.8	160.2	114.5
September	127.2	106.4	119.1	131.3	113.1	151.5	190.5	114.0
December	129.3	108.0	120.6	131.9	115.3	152.1	207.0	116.1
2001								
March	132.0	109.4	121.2	130.1	115.5	152.4	174.5	116.1
June	136.9	110.5	121.9	129.5	115.6	153.6	188.8	116.8

(a) Reference base of each index: 1989-90 = 100.0.

<i>Period</i>	<i>Rubber and plastics (255-256)</i>	<i>Non-metallic mineral products (26)</i>	<i>Base metal products (271-273)</i>	<i>Fabricated metal products (274-276)</i>	<i>Transport equipment and parts (281-282)</i>	<i>Electronic equipment and other machinery (283-286)</i>	<i>Other manufacturing (29)</i>
1997-98	113.8	116.7	102.2	113.1	116.6	109.7	119.6
1998-99	114.0	117.1	98.7	113.6	117.8	109.1	121.4
1999-2000	114.9	117.5	104.8	115.2	119.6	109.9	123.9
2000-01	119.1	117.8	115.4	116.7	124.1	112.3	128.8
1996							
September	113.8	114.6	98.3	111.1	115.9	108.8	117.9
December	114.1	115.1	96.2	111.7	115.3	108.8	118.9
1997							
March	114.0	115.6	98.0	112.1	115.4	109.1	119.0
June	114.0	116.1	100.1	112.4	115.2	109.3	118.9
September	113.8	116.4	102.5	112.5	115.7	109.6	119.3
December	113.5	116.4	102.4	112.9	116.2	109.9	119.4
1998							
March	114.2	116.8	101.5	113.1	116.8	109.7	119.5
June	113.8	117.2	102.2	113.7	117.8	109.7	120.3
September	114.1	117.2	102.8	113.9	118.7	109.5	121.2
December	113.9	117.2	99.6	113.2	117.4	109.2	121.1
1999							
March	114.0	117.1	96.5	113.5	117.7	108.6	121.1
June	114.1	116.8	95.7	113.8	117.5	109.1	122.1
September	114.0	117.2	97.8	113.5	118.1	109.3	123.1
December	114.1	117.3	102.4	114.7	119.3	109.7	123.5
2000							
March	115.7	117.6	107.9	115.7	119.9	110.1	123.6
June	115.9	117.9	111.1	116.8	121.2	110.5	125.3
September	116.2	117.8	112.0	116.6	121.5	110.6	126.8
December	118.4	118.0	117.4	116.3	123.9	111.8	128.9
2001							
March	120.0	117.7	115.6	116.7	124.7	112.4	129.2
June	121.6	117.7	116.4	117.2	126.3	114.2	130.4

(a) Reference base of each index: 1989-90 = 100.0.

MATERIALS USED IN MANUFACTURING INDUSTRIES(a): Division index

<i>Period</i>	<i>Manufacturing division</i>	<i>Imported materials</i>	<i>Domestic materials</i>
1997-98	107.0	112.2	104.1
1998-99	105.9	113.5	101.5
1999-2000	115.8	118.8	114.5
2000-01	132.4	134.0	131.9
1996			
September	106.1	110.8	103.5
December	106.1	109.6	104.2
1997			
March	106.3	108.9	105.1
June	105.4	108.1	104.0
September	106.5	109.9	104.6
December	108.2	111.9	106.3
1998			
March	106.2	112.5	102.6
June	107.1	114.6	102.7
September	107.5	116.6	102.2
December	105.8	113.6	101.3
1999			
March	104.2	111.6	99.9
June	106.1	112.3	102.5
September	108.3	112.2	106.3
December	113.6	115.6	112.8
2000			
March	117.8	120.3	116.7
June	123.5	126.9	122.0
September	127.8	129.6	127.3
December	133.9	133.6	134.6
2001			
March	130.3	132.9	129.0
June	137.7	140.0	136.8

(a) Reference base of each index: 1989-90 = 100.0.

MATERIALS USED IN MANUFACTURING INDUSTRIES: Division percentage changes

<i>Period</i>	<i>Manufacturing division</i>	<i>Imported materials</i>	<i>Domestic materials</i>
.....			
PERCENTAGE CHANGE FROM PREVIOUS YEAR			
1997-98	1.0	2.6	-0.1
1998-99	-1.0	1.2	-2.5
1999-2000	9.3	4.6	12.8
2000-01	14.4	12.9	15.3
.....			
PERCENTAGE CHANGE FROM PREVIOUS QUARTER			
1996			
September	-1.9	-2.7	-1.6
December	—	-1.1	0.7
1997			
March	0.2	-0.6	0.9
June	-0.8	-0.7	-1.0
September	1.0	1.7	0.6
December	1.6	1.8	1.6
1998			
March	-1.8	0.5	-3.5
June	0.8	1.9	0.1
September	0.4	1.7	-0.5
December	-1.6	-2.6	-0.9
1999			
March	-1.5	-1.8	-1.4
June	1.8	0.6	2.6
September	2.1	-0.1	3.7
December	4.9	3.0	6.1
2000			
March	3.7	4.1	3.5
June	4.8	5.5	4.5
September	3.5	2.1	4.3
December	4.8	3.1	5.7
2001			
March	-2.7	-0.5	-4.2
June	5.7	5.3	6.0
.....			
PERCENTAGE CHANGE FROM CORRESPONDING QUARTER OF PREVIOUS YEAR			
1996			
September	-4.7	-7.6	-2.9
December	-3.5	-7.6	-1.0
1997			
March	-4.0	-7.8	-1.5
June	-2.6	-5.1	-1.1
September	0.4	-0.8	1.1
December	2.0	2.1	2.0
1998			
March	-0.1	3.3	-2.4
June	1.6	6.0	-1.3
September	0.9	6.1	-2.3
December	-2.2	1.5	-4.7
1999			
March	-1.9	-0.8	-2.6
June	-0.9	-2.0	-0.2
September	0.7	-3.8	4.0
December	7.4	1.8	11.4
2000			
March	13.1	7.8	16.8
June	16.4	13.0	19.0
September	18.0	15.5	19.8
December	17.9	15.6	19.3
2001			
March	10.6	10.5	10.5
June	11.5	10.3	12.1

— nil or rounded to zero (including null cells)

<i>Period</i>	<i>Food, beverages and tobacco (21)</i>	<i>Textiles and textile products (221-222)</i>	<i>Knitting mills and clothing (223-224)</i>	<i>Footwear (225)</i>	<i>Leather and leather products (226)</i>	<i>Sawmilling and timber products (231-232)</i>	<i>Paper and paper products (233)</i>	<i>Printing and publishing (24)</i>
1997-98	110.0	96.3	107.1	109.7	91.9	119.8	96.4	105.5
1998-99	110.5	94.0	106.4	110.3	93.5	119.8	97.6	108.1
1999-2000	110.8	91.6	102.6	107.4	97.8	123.0	99.8	107.7
2000-01	121.0	102.3	106.5	120.3	107.2	132.8	110.0	116.5
1996								
September	107.7	94.1	107.2	111.9	95.1	113.0	98.3	109.1
December	104.9	91.9	105.2	111.0	95.9	113.2	97.8	106.7
1997								
March	105.0	92.5	105.4	110.1	95.6	113.4	96.4	104.7
June	107.3	93.5	105.8	110.9	93.3	115.2	95.4	102.7
September	109.3	95.8	106.3	109.2	90.5	117.1	95.9	102.8
December	110.4	96.4	107.9	110.0	93.4	118.6	95.9	104.3
1998								
March	110.7	96.2	106.8	109.3	90.1	120.9	96.3	106.8
June	109.6	96.7	107.3	110.1	93.6	122.5	97.5	108.2
September	110.5	97.5	107.4	111.7	94.0	122.3	102.7	109.2
December	109.6	94.0	107.7	110.9	96.3	120.8	97.3	108.2
1999								
March	111.5	93.0	106.3	110.5	93.9	117.9	96.2	107.8
June	110.2	91.4	104.0	107.9	89.9	118.2	94.1	107.3
September	108.7	89.1	102.5	101.5	89.0	119.1	94.2	107.4
December	110.8	89.2	101.5	105.2	96.4	121.9	98.2	106.7
2000								
March	111.6	91.3	102.8	111.1	101.3	123.4	101.0	106.9
June	112.2	96.8	103.7	111.7	104.3	127.7	105.6	109.6
September	116.8	98.7	102.9	112.1	103.4	129.0	107.1	112.2
December	118.3	100.7	107.0	120.1	106.9	131.7	110.3	116.7
2001								
March	120.8	102.9	106.3	122.6	108.4	133.1	111.0	117.9
June	128.0	106.7	109.7	126.3	109.9	137.4	111.6	119.2

(a) Reference base of each index: 1989-90 = 100.0.

<i>Period</i>	<i>Petroleum and coal products (251-252)</i>	<i>Chemicals (253-254)</i>	<i>Rubber and plastics (255-256)</i>	<i>Non-metallic mineral products (26)</i>	<i>Basic metal products (271-273)</i>	<i>Fabricated metal products (274-276)</i>	<i>Transport equipment and parts (281-282)</i>	<i>Electronic equipment and other machinery (283-286)</i>	<i>Other manufacturing (29)</i>
1997-98	108.4	111.9	113.4	112.6	93.4	107.3	113.5	104.6	113.8
1998-99	94.4	111.4	110.1	111.3	91.7	106.2	116.8	103.7	115.3
1999-2000	157.8	114.0	110.8	110.7	92.5	106.1	120.5	103.4	118.8
2000-01	217.7	126.3	123.9	111.5	101.7	111.7	125.2	108.0	125.6
1996									
September	109.2	111.9	115.3	113.6	93.2	106.7	110.3	103.1	110.4
December	123.8	110.5	113.5	112.5	91.7	104.9	109.8	102.3	110.3
1997									
March	125.0	110.6	113.1	113.1	93.2	106.2	109.9	102.6	111.2
June	110.7	109.8	111.8	113.0	94.3	107.1	110.2	102.6	111.7
September	109.2	110.6	112.2	112.6	94.4	107.4	112.0	103.6	112.1
December	120.2	111.8	113.3	112.2	92.8	106.9	112.9	104.3	113.4
1998									
March	101.5	112.0	114.9	112.4	92.2	107.4	113.9	105.5	114.5
June	102.5	113.3	113.1	113.0	94.2	107.6	115.1	104.9	115.3
September	95.3	115.9	113.2	111.9	95.0	108.2	117.0	105.1	117.2
December	94.9	111.4	111.1	111.7	92.8	107.8	116.3	104.4	115.3
1999									
March	84.6	109.4	109.6	111.1	90.3	105.3	116.6	103.2	114.5
June	102.8	108.8	106.3	110.3	88.6	103.5	117.2	102.0	114.1
September	126.9	107.9	106.4	110.6	86.4	104.6	118.1	102.1	115.1
December	148.0	112.3	108.1	110.9	92.1	106.1	120.5	102.3	117.6
2000									
March	164.5	114.2	112.2	110.7	94.7	106.0	120.4	103.6	119.9
June	191.6	121.5	116.4	110.7	96.7	107.8	122.9	105.6	122.4
September	205.9	122.5	119.6	111.1	97.6	109.7	123.1	106.1	123.4
December	240.5	124.8	122.4	110.8	102.3	111.9	125.3	107.9	126.3
2001									
March	204.3	126.9	125.4	111.5	101.7	112.0	125.2	108.1	125.7
June	220.1	130.8	128.2	112.5	105.2	113.1	127.2	109.8	126.9

(a) Reference base of each index: 1989-90 = 100.0.

COPPER MATERIALS USED IN THE MANUFACTURE OF ELECTRICAL EQUIPMENT(a)

Period	INDUSTRIAL ELECTRIC MOTORS .			DISTRIBUTION TRANSFORMERS .			POWER TRANSFORMERS.		
	Index numbers	% change from corresponding quarter of previous year	% change from previous period	Index numbers	% change from corresponding quarter of previous year	% change from previous period	Index numbers	% change from corresponding quarter of previous year	% change from previous period
1997-98	94.9	..	0.1	95.6	..	-1.1	95.9	..	-1.7
1998-99	85.6	..	-9.8	86.7	..	-9.3	83.1	..	-13.3
1999-2000	89.1	..	4.1	88.9	..	2.5	85.4	..	2.8
2000-01	97.5	..	9.4	97.9	..	10.1	91.4	..	7.0
1996									
September	89.9	-21.0	-11.1	91.6	-21.8	-11.6	95.0	-15.8	-8.2
December	91.6	-17.0	1.9	92.9	-18.4	1.4	95.1	-14.2	0.1
1997									
March	97.8	-6.9	6.8	100.0	-7.5	7.6	99.4	-6.8	4.5
June	100.0	-1.1	2.2	102.1	-1.4	2.1	101.0	-2.4	1.6
September	100.6	11.9	0.6	102.3	11.7	0.2	103.2	8.6	2.2
December	95.6	4.4	-5.0	96.8	4.2	-5.4	98.6	3.7	-4.5
1998									
March	90.3	-7.7	-5.5	90.5	-9.5	-6.5	94.6	-4.8	-4.1
June	92.9	-7.1	2.9	92.6	-9.3	2.3	87.1	-13.8	-7.9
September	90.7	-9.8	-2.4	92.5	-9.6	-0.1	88.1	-14.6	1.1
December	87.8	-8.2	-3.2	90.3	-6.7	-2.4	86.2	-12.6	-2.2
1999									
March	81.7	-9.5	-6.9	81.7	-9.7	-9.5	79.1	-16.4	-8.2
June	82.1	-11.6	0.5	82.4	-11.0	0.9	79.1	-9.2	—
September	85.6	-5.6	4.3	85.1	-8.0	3.3	82.3	-6.6	4.0
December	88.3	0.6	3.2	88.2	-2.3	3.6	84.4	-2.1	2.6
2000									
March	90.7	11.0	2.7	91.0	11.4	3.2	86.8	9.7	2.8
June	91.6	11.6	1.0	91.3	10.8	0.3	88.0	11.3	1.4
September	94.3	10.2	2.9	94.7	11.3	3.7	88.7	7.8	0.8
December	100.0	13.3	6.0	99.8	13.2	5.4	94.7	12.2	6.8
2001									
March	97.8	7.8	-2.2	98.7	8.5	-1.1	90.3	4.0	-4.6
June	97.8	6.8	—	98.2	7.6	-0.5	91.7	4.2	1.6

.. not applicable

— nil or rounded to zero (including null cells)

(a) Reference base of each index: 1989-90 = 100.0.

OUTPUT OF THE BUILDING INDUSTRY (a)

<i>Period</i>	<i>Index numbers</i>	<i>% change from corresponding quarter of previous year</i>	<i>% change from previous period</i>
1997-98	97.0	..	2.8
1998-99	100.0	..	3.1
1999-2000	104.9	..	4.9
2000-01	106.5	..	1.5
1996			
September	93.7	na	—
December	93.9	na	0.2
1997			
March	94.6	na	0.7
June	95.1	na	0.5
September	96.1	2.6	1.1
December	96.5	2.8	0.4
1998			
March	97.3	2.9	0.8
June	98.0	3.0	0.7
September	98.6	2.6	0.6
December	99.4	3.0	0.8
1999			
March	100.5	3.3	1.1
June	101.4	3.5	0.9
September	102.7	4.2	1.3
December	104.7	5.3	1.9
2000			
March	105.7	5.2	1.0
June	106.3	4.8	0.6
September	106.3	3.5	—
December	106.8	2.0	0.5
2001			
March	106.6	0.9	-0.2
June	106.2	-0.1	-0.4

.. not applicable

na not available

— nil or rounded to zero (including null cells)

(a) Reference base of each index: 1998-99 = 100.0.

MATERIALS USED IN HOUSE BUILDING(a): Index numbers

<i>Period</i>	<i>Weighted average of six State capital cities</i>	<i>Sydney</i>	<i>Melbourne</i>	<i>Brisbane</i>	<i>Adelaide</i>	<i>Perth</i>	<i>Hobart</i>
1997-98	118.2	119.7	117.1	117.1	123.3	115.9	121.0
1998-99	119.5	121.6	118.0	118.2	125.0	116.1	122.2
1999-2000	122.8	126.8	121.7	120.8	127.2	117.7	123.8
2000-01	124.4	130.0	123.1	120.6	129.6	118.8	126.0
1996							
September	115.6	115.9	114.9	114.4	119.6	115.0	120.5
December	115.8	115.8	115.2	114.8	120.4	115.0	119.8
1997							
March	116.1	116.0	115.1	115.4	120.8	115.3	120.1
June	117.0	117.3	115.8	116.5	121.5	115.8	120.1
September	117.3	117.8	116.1	116.8	122.4	116.0	120.3
December	117.9	119.4	116.6	116.7	122.9	115.8	120.6
1998							
March	118.7	120.8	117.6	117.0	123.7	115.7	121.2
June	119.0	120.7	118.0	117.9	124.1	115.9	122.0
September	119.4	120.8	118.6	118.4	124.4	116.1	122.5
December	119.7	121.8	118.1	118.6	125.2	116.3	122.3
1999							
March	119.5	122.0	117.7	118.4	125.1	116.0	122.1
June	119.2	121.8	117.4	117.5	125.2	115.9	121.9
September	120.5	123.7	119.2	118.3	125.5	116.9	122.1
December	121.5	124.4	120.5	119.9	126.0	117.1	122.6
2000							
March	123.8	128.0	122.9	122.1	127.5	118.1	124.6
June	125.5	131.2	124.2	122.9	129.7	118.7	126.0
September	124.5	130.0	123.2	121.2	129.8	118.3	125.2
December	124.4	129.8	123.4	120.6	129.7	119.0	125.6
2001							
March	124.2	129.8	122.8	120.4	129.4	118.9	126.3
June	124.4	130.2	123.1	120.2	129.5	119.1	127.0

(a) Reference base of each index: 1989-90 = 100.0.

MATERIALS USED IN HOUSE BUILDING: Percentage change

Period	Weighted average of six State capital cities						
	Sydney	Melbourne	Brisbane	Adelaide	Perth	Hobart	
PERCENTAGE CHANGE FROM PREVIOUS YEAR							
1997-98	1.8	2.9	1.6	1.6	2.2	0.5	0.7
1998-99	1.1	1.6	0.8	0.9	1.4	0.2	1.0
1999-2000	2.8	4.3	3.1	2.2	1.8	1.4	1.3
2000-01	1.3	2.5	1.2	-0.2	1.9	0.9	1.8
PERCENTAGE CHANGE FROM PREVIOUS QUARTER							
1996							
September	0.1	-0.3	-0.2	0.4	1.1	0.3	-0.1
December	0.2	-0.1	0.3	0.3	0.7	—	-0.6
1997							
March	0.3	0.2	-0.1	0.5	0.3	0.3	0.3
June	0.8	1.1	0.6	1.0	0.6	0.4	—
September	0.3	0.4	0.3	0.3	0.7	0.2	0.2
December	0.5	1.4	0.4	-0.1	0.4	-0.2	0.2
1998							
March	0.7	1.2	0.9	0.3	0.7	-0.1	0.5
June	0.3	-0.1	0.3	0.8	0.3	0.2	0.7
September	0.3	0.1	0.5	0.4	0.2	0.2	0.4
December	0.3	0.8	-0.4	0.2	0.6	0.2	-0.2
1999							
March	-0.2	0.2	-0.3	-0.2	-0.1	-0.3	-0.2
June	-0.3	-0.2	-0.3	-0.8	0.1	-0.1	-0.2
September	1.1	1.6	1.5	0.7	0.2	0.9	0.2
December	0.8	0.6	1.1	1.4	0.4	0.2	0.4
2000							
March	1.9	2.9	2.0	1.8	1.2	0.9	1.6
June	1.4	2.5	1.1	0.7	1.7	0.5	1.1
September	-0.8	-0.9	-0.8	-1.4	0.1	-0.3	-0.6
December	-0.1	-0.2	0.2	-0.5	-0.1	0.6	0.3
2001							
March	-0.2	—	-0.5	-0.2	-0.2	-0.1	0.6
June	0.2	0.3	0.2	-0.2	0.1	0.2	0.6
PERCENTAGE CHANGE FROM CORRESPONDING QUARTER OF PREVIOUS YEAR							
1996							
September	-0.5	-0.4	-0.9	-1.6	1.0	—	-0.2
December	0.1	0.2	-0.1	-0.6	2.0	0.1	-0.8
1997							
March	0.7	0.4	—	0.9	2.4	0.6	-0.5
June	1.3	0.9	0.6	2.2	2.7	1.0	-0.4
September	1.5	1.6	1.0	2.1	2.3	0.9	-0.2
December	1.8	3.1	1.2	1.7	2.1	0.7	0.7
1998							
March	2.2	4.1	2.2	1.4	2.4	0.3	0.9
June	1.7	2.9	1.9	1.2	2.1	0.1	1.6
September	1.8	2.5	2.2	1.4	1.6	0.1	1.8
December	1.5	2.0	1.3	1.6	1.9	0.4	1.4
1999							
March	0.7	1.0	0.1	1.2	1.1	0.3	0.7
June	0.2	0.9	-0.5	-0.3	0.9	—	-0.1
September	0.9	2.4	0.5	-0.1	0.9	0.7	-0.3
December	1.5	2.1	2.0	1.1	0.6	0.7	0.2
2000							
March	3.6	4.9	4.4	3.1	1.9	1.8	2.0
June	5.3	7.7	5.8	4.6	3.6	2.4	3.4
September	3.3	5.1	3.4	2.5	3.4	1.2	2.5
December	2.4	4.3	2.4	0.6	2.9	1.6	2.4
2001							
March	0.3	1.4	-0.1	-1.4	1.5	0.7	1.4
June	-0.9	-0.8	-0.9	-2.2	-0.2	0.3	0.8

— nil or rounded to zero (including null cells)

<i>Period</i>	<i>Weighted average of six State capital cities</i>	<i>Sydney</i>	<i>Melbourne</i>	<i>Brisbane</i>	<i>Adelaide</i>	<i>Perth</i>	<i>Hobart</i>
1997-98	114.2	114.4	111.4	117.2	115.1	114.6	117.4
1998-99	115.2	115.2	113.2	118.4	115.5	114.1	118.5
1999-2000	116.1	116.0	114.4	119.3	116.1	115.4	119.0
2000-01	116.4	116.1	115.4	119.1	116.8	115.6	119.3
1996							
September	112.7	112.5	110.8	115.2	113.1	114.0	115.8
December	112.8	112.6	110.4	115.5	114.1	114.3	116.1
1997							
March	113.4	113.2	111.1	116.1	114.5	114.9	116.5
June	113.9	113.9	111.3	116.9	114.7	115.2	116.7
September	114.0	114.2	111.2	117.5	114.8	115.3	116.5
December	114.0	114.2	111.3	117.0	115.1	114.8	117.2
1998							
March	114.1	114.4	111.4	117.0	115.0	114.2	117.7
June	114.5	114.8	111.8	117.3	115.6	114.2	118.1
September	114.8	115.0	112.4	117.8	115.3	114.2	118.4
December	115.2	115.1	113.2	118.7	115.6	114.2	118.6
1999							
March	115.2	115.2	113.3	118.6	115.6	113.9	118.5
June	115.4	115.4	113.7	118.6	115.6	114.1	118.3
September	115.2	115.1	113.4	118.9	115.2	114.4	118.5
December	115.4	115.3	113.8	118.9	115.4	115.0	118.4
2000							
March	116.4	116.4	114.5	119.5	116.3	115.8	119.2
June	117.4	117.3	116.0	120.0	117.6	116.5	119.7
September	115.5	115.4	114.0	118.7	116.0	114.0	117.9
December	116.3	115.7	115.3	119.1	116.8	115.6	119.1
2001							
March	116.7	116.4	115.7	119.2	116.8	116.0	120.2
June	117.2	116.7	116.4	119.3	117.4	116.8	120.1

(a) Reference base of each index: 1989-90 = 100.0.

MATERIALS USED IN BUILDING OTHER THAN HOUSE BUILDING: Percentage change

Period	Weighted average of six State capital cities						
	Sydney	Melbourne	Brisbane	Adelaide	Perth	Hobart	
PERCENTAGE CHANGE FROM PREVIOUS PERIOD							
1997-98	0.9	1.1	0.5	1.1	0.9	—	0.9
1998-99	0.9	0.7	1.6	1.0	0.3	-0.4	0.9
1999-2000	0.8	0.7	1.1	0.8	0.5	1.1	0.4
2000-01	0.3	0.1	0.9	-0.2	0.6	0.2	0.3
PERCENTAGE CHANGE FROM PREVIOUS QUARTER							
1996							
September	—	—	-0.4	0.3	0.2	0.4	0.5
December	0.1	0.1	-0.4	0.3	0.9	0.3	0.3
1997							
March	0.5	0.5	0.6	0.5	0.4	0.5	0.3
June	0.4	0.6	0.2	0.7	0.2	0.3	0.2
September	0.1	0.3	-0.1	0.5	0.1	0.1	-0.2
December	—	—	0.1	-0.4	0.3	-0.4	0.6
1998							
March	0.1	0.2	0.1	—	-0.1	-0.5	0.4
June	0.4	0.3	0.4	0.3	0.5	—	0.3
September	0.3	0.2	0.5	0.4	-0.3	—	0.3
December	0.3	0.1	0.7	0.8	0.3	—	0.2
1999							
March	—	0.1	0.1	-0.1	—	-0.3	-0.1
June	0.2	0.2	0.4	—	—	0.2	-0.2
September	-0.2	-0.3	-0.3	0.3	-0.3	0.3	0.2
December	0.2	0.2	0.4	—	0.2	0.5	-0.1
2000							
March	0.9	1.0	0.6	0.5	0.8	0.7	0.7
June	0.9	0.8	1.3	0.4	1.1	0.6	0.4
September	-1.6	-1.6	-1.7	-1.1	-1.4	-2.1	-1.5
December	0.7	0.3	1.1	0.3	0.7	1.4	1.0
2001							
March	0.3	0.6	0.3	0.1	—	0.3	0.9
June	0.4	0.3	0.6	0.1	0.5	0.7	-0.1
PERCENTAGE CHANGE FROM CORRESPONDING QUARTER OF PREVIOUS YEAR							
1996							
September	0.3	0.1	0.2	—	0.6	1.2	0.9
December	0.1	-0.1	-0.7	0.4	1.4	1.1	0.7
1997							
March	0.5	0.5	-0.3	1.0	1.5	1.3	1.1
June	1.1	1.2	—	1.7	1.6	1.5	1.3
September	1.2	1.5	0.4	2.0	1.5	1.1	0.6
December	1.1	1.4	0.8	1.3	0.9	0.4	0.9
1998							
March	0.6	1.1	0.3	0.8	0.4	-0.6	1.0
June	0.5	0.8	0.4	0.3	0.8	-0.9	1.2
September	0.7	0.7	1.1	0.3	0.4	-1.0	1.6
December	1.1	0.8	1.7	1.5	0.4	-0.5	1.2
1999							
March	1.0	0.7	1.7	1.4	0.5	-0.3	0.7
June	0.8	0.5	1.7	1.1	—	-0.1	0.2
September	0.3	0.1	0.9	0.9	-0.1	0.2	0.1
December	0.2	0.2	0.5	0.2	-0.2	0.7	-0.2
2000							
March	1.0	1.0	1.1	0.8	0.6	1.7	0.6
June	1.7	1.6	2.0	1.2	1.7	2.1	1.2
September	0.3	0.3	0.5	-0.2	0.7	-0.3	-0.5
December	0.8	0.3	1.3	0.2	1.2	0.5	0.6
2001							
March	0.3	—	1.0	-0.3	0.4	0.2	0.8
June	-0.2	-0.5	0.3	-0.6	-0.2	0.3	0.3

— nil or rounded to zero (including null cells)

Period	OPEN CUT MINING			UNDERGROUND MINING		
	Index numbers	% change from corresponding quarter of previous year	% change from previous period	Index numbers	% change from corresponding quarter of previous year	% change from previous period
1997-98	114.6	..	-1.2	117.0	..	0.1
1998-99	113.2	..	-1.2	118.8	..	1.5
1999-2000	122.2	..	8.0	118.3	..	-0.4
2000-01	128.9	..	5.5	122.9	..	3.9
1996						
September	114.0	0.7	-0.5	117.1	3.4	2.2
December	117.3	3.3	2.9	116.6	2.6	-0.4
1997						
March	117.6	2.3	0.3	116.7	2.3	0.1
June	115.1	0.4	-2.1	116.9	2.0	0.2
September	114.5	0.4	-0.5	116.8	-0.3	-0.1
December	115.8	-1.3	1.1	116.8	0.2	—
1998						
March	116.5	-0.9	0.6	117.3	0.5	0.4
June	111.7	-3.0	-4.1	117.1	0.2	-0.2
September	113.3	-1.0	1.4	119.0	1.9	1.6
December	113.1	-2.3	-0.2	118.7	1.6	-0.3
1999						
March	112.3	-3.6	-0.7	118.7	1.2	—
June	114.0	2.1	1.5	118.6	1.3	-0.1
September	114.8	1.3	0.7	117.4	-1.3	-1.0
December	120.8	6.8	5.2	117.5	-1.0	0.1
2000						
March	124.9	11.2	3.4	118.3	-0.3	0.7
June	128.3	12.5	2.7	119.9	1.1	1.4
September	125.7	9.5	-2.0	119.8	2.0	-0.1
December	132.5	9.7	5.4	121.1	3.1	1.1
2001						
March	126.8	1.5	-4.3	123.5	4.4	2.0
June	130.4	1.6	2.8	127.2	6.1	3.0

.. not applicable

— nil or rounded to zero (including null cells)

(a) Reference base of each index: 1989-90 = 100.0.

<i>Period</i>	<i>Index numbers</i>	<i>% change from corresponding quarter of previous year</i>	<i>% change from previous period</i>
1998-99	100.0	..	na
1999-2000	100.2	..	0.2
2000-01	102.3	..	2.1
1998			
September	100.1	na	na
December	100.0	na	-0.1
1999			
March	100.3	na	0.3
June	99.6	na	-0.7
September	99.5	-0.6	-0.1
December	99.5	-0.5	—
2000			
March	100.4	0.1	0.9
June	101.2	1.6	0.8
September	101.2	1.7	—
December	102.1	2.6	0.9
2001			
March	102.8	2.4	0.7
June	103.2	2.0	0.4

.. not applicable

na not available

— nil or rounded to zero (including null cells)

(a) Reference base of each index: 1998-99 = 100.0.

OUTPUT OF THE TRANSPORT (FREIGHT) & STORAGE INDUSTRIES(a): Subdivision indexes

<i>Period</i>	<i>Road transport (61)</i>	<i>Rail transport (62)</i>	<i>Water transport (63)</i>	<i>Air and space transport (64)</i>	<i>Services to transport (66)</i>	<i>Storage (67)</i>
1997-98	98.8	105.1	na	na	na	99.4
1998-99	100.0	100.0	100.0	100.0	100.0	100.0
1999-2000	101.0	94.4	103.8	99.1	97.2	100.9
2000-01	103.1	95.3	109.8	102.7	97.2	102.1
1996						
September	na	111.0	na	na	na	93.3
December	na	108.5	na	na	na	94.4
1997						
March	97.2	110.0	na	na	na	97.6
June	98.1	109.5	na	na	na	98.3
September	98.1	106.9	na	na	na	99.5
December	99.1	106.0	na	na	na	99.3
1998						
March	98.7	105.3	na	na	na	99.1
June	99.4	102.3	na	na	na	99.5
September	99.4	103.3	101.8	99.2	100.2	99.5
December	99.7	99.8	100.4	100.2	100.3	100.3
1999						
March	100.5	99.5	99.4	102.3	99.7	100.1
June	100.4	97.4	98.3	98.3	99.9	100.1
September	100.5	95.9	99.7	98.2	97.2	100.3
December	100.7	93.6	102.1	96.7	97.2	100.4
2000						
March	100.9	94.2	104.7	100.5	97.2	101.3
June	101.8	93.9	108.6	101.1	97.0	101.7
September	101.6	93.7	108.8	101.8	97.2	101.8
December	102.7	95.7	108.8	103.3	97.5	101.7
2001						
March	103.8	95.7	110.3	102.9	97.1	102.4
June	104.2	96.2	111.4	102.8	96.9	102.5

na not available

(a) Reference base of each index: 1998-99 = 100.0.

<i>Period</i>	<i>Index numbers</i>	<i>% change from corresponding quarter of previous year</i>	<i>% change from previous period</i>
1998-99	100.0	..	na
1999-2000	105.6	..	5.6
2000-01	112.0	..	6.1
1998			
September	98.7	na	na
December	99.9	na	1.2
1999			
March	99.8	na	-0.1
June	101.6	na	1.8
September	103.4	4.8	1.8
December	105.0	5.1	1.5
2000			
March	105.8	6.0	0.8
June	108.0	6.3	2.0
September	110.2	6.6	2.0
December	111.6	6.3	1.3
2001			
March	112.3	6.1	0.6
June	113.7	5.3	1.2

.. not applicable

na not available

(a) Reference base of each index: 1998-99 = 100.0.

<i>Period</i>	<i>Property services (77)</i>	<i>Property operators and developers (771)</i>	<i>Real estate agents (772)</i>	<i>Machinery equipment hiring and leasing (774)</i>	<i>Business services (78)</i>	<i>Scientific research (781)</i>	<i>Technical services (782)</i>
1997-98	na	96.5	na	97.4	na	na	na
1998-99	100.0	100.0	100.0	100.0	100.0	100.0	100.0
1999-2000	106.9	102.8	109.9	101.3	103.8	102.7	102.2
2000-01	115.8	109.0	121.6	100.8	106.9	104.6	103.6
1996							
September	na	91.0	na	102.7	na	na	na
December	na	92.0	na	101.4	na	na	na
1997							
March	na	92.2	na	99.3	na	na	na
June	na	94.4	na	99.7	na	na	na
September	na	95.2	na	98.2	na	na	na
December	na	96.2	na	96.5	na	na	na
1998							
March	na	96.9	na	95.9	na	na	na
June	na	97.7	na	99.0	na	na	na
September	98.3	98.6	97.9	99.4	99.4	98.3	100.4
December	99.9	100.5	99.5	99.8	99.8	98.4	100.2
1999							
March	100.4	100.3	100.5	100.4	99.0	101.3	99.2
June	101.4	100.6	102.1	100.4	101.7	102.0	100.3
September	103.6	101.3	105.2	101.1	103.1	102.3	101.6
December	105.6	102.2	108.2	101.4	104.1	102.3	102.0
2000							
March	107.8	103.0	111.3	101.2	103.3	103.0	102.3
June	110.5	104.6	115.0	101.4	104.6	103.0	102.9
September	113.4	106.3	118.9	101.4	106.1	103.5	103.0
December	115.1	108.7	120.5	101.6	107.0	104.8	103.3
2001							
March	116.7	110.3	122.5	100.4	106.5	105.1	103.9
June	118.0	110.8	124.5	100.0	108.0	105.2	104.2

na not available

(a) Reference base of each index: 1998-99 = 100.0.

<i>Period</i>	<i>Computer services (783)</i>	<i>Legal and accounting services (784)</i>	<i>Marketing and business management services (785)</i>	<i>Other business services (786)</i>
1997-98	na	na	na	na
1998-99	100.0	100.0	100.0	100.0
1999-2000	108.0	103.1	104.2	102.1
2000-01	111.2	107.7	109.6	103.7
1996				
September	na	na	na	na
December	na	na	na	na
1997				
March	na	na	na	na
June	na	na	na	na
September	na	na	na	na
December	na	na	na	na
1998				
March	na	na	na	na
June	na	na	na	na
September	97.1	99.7	100.7	99.6
December	97.8	99.8	102.1	99.7
1999				
March	99.1	100.2	95.6	100.2
June	106.1	100.3	101.7	100.5
September	106.4	102.0	105.0	101.3
December	108.2	102.3	106.4	102.2
2000				
March	108.6	103.3	99.4	102.8
June	108.7	104.7	105.9	102.0
September	109.2	106.6	109.6	103.2
December	110.6	107.4	111.0	103.9
2001				
March	112.2	108.2	105.6	103.8
June	112.7	108.7	112.2	104.0

na not available

(a) Reference base of each index: 1998-99 = 100.0.

EXPLANATORY NOTES

INTRODUCTION

1 This publication contains a range of producer price indexes. Economy-wide indexes are presented within a stage of production framework, followed by a set of indexes relating to specific industries (selected manufacturing, construction, mining and service industries).

2 Index numbers for the recently established producer price indexes, i.e. stage of production and the service industry and construction industry output indexes, are calculated on the reference base 1998–99 = 100.0. The index numbers for the other, longer established producer price indexes are calculated on the reference base 1989–90 = 100.0. It is planned to standardise the reference base of all indexes in this publication from June quarter 2002, at which time link factors to convert each series to their previous reference base will be provided.

GENERAL

Output and input indexes

3 Producer price indexes can be constructed as either output measures or input measures. Output indexes measure changes in the prices of sales by a defined sector of the economy while input indexes measure changes in the prices of purchases by a particular economic sector.

Valuation basis

4 The valuation basis for the transactions covered by an output index is *basic prices*, defined as the amount received by the producer exclusive of any taxes on products and transport and trade margins (i.e., the pricing point is ex-factory, ex-farm, ex-service provider, etc.).

5 On the other hand, an input index has a valuation basis of *purchasers' prices*, defined as the amount paid by the purchaser inclusive of any non-deductible taxes on products and transport and trade margins (i.e., the prices recorded in the index should be those relating to delivered into store, delivered on site, etc.).

6 In reality, industry practice may mean that it is sometimes necessary to diverge from the conceptual ideal in order to obtain actual transaction prices. For example, although the pricing point for the output index Price Indexes of Articles Produced by Manufacturing Industries is ex-factory, in cases where costs such as handling and distribution are built into the manufacturer's selling price, they will be included in the index.

7 Similarly, for input indexes such as the Price Index of Materials Used In House Building, which has a pricing point of delivered on site, it has sometimes been necessary to use the nearest actual transaction price available, e.g. prices of materials supplied and fixed.

8 The GST is excluded from all the prices recorded in the current producer price indexes because, in the main, it is deductible on business-to-business transactions. In the case of future service industry output indexes relating to business-to-household transactions, the GST will also be excluded because the pricing basis will be basic prices (i.e., exclusive of product taxes).

Items and weights

9 The indexes are fixed weighted indexes of the Laspeyres form. The list of items and the weights are updated periodically to ensure they remain representative. New index series compiled using updated weights are linked to the previous series to maintain a continuous series. Broad level weights are derived from an analysis of the latest available input-output tables as well as other ABS and industry sources.

10 Where prices of items are expected to move in a similar way, many of the directly priced items carry not only their own weight but also the weight of similar commodities.

EXPLANATORY NOTES *continued*

Price measurement

11 The main sources of ongoing price data are samples of businesses. The samples can relate to either buyers or sellers, or a combination of both. The choice is influenced by the pricing point of the index (output or input) and practical considerations such as the relative degree of concentration of buyers, and of sellers, and the implications for sample sizes and costs.

12 The main pricing methodology used is specification pricing, under which a manageable sample of precisely specified products is selected, in consultation with each reporting business, for repeat pricing. In specifying the products, care is taken to ensure that they are fully defined in terms of all the characteristics which influence their transaction prices. As such, all the relevant technical characteristics need to be described (e.g. make, model, features) along with the unit of sale, type of packaging, conditions of sale (e.g. delivered, payment within 30 days), etc.

13 When the quality or the specifications of an item being priced change over time, adjustments are made to the reported prices so that the index captures only pure price change. That is, any element of price change attributable to a change in quality is removed. If there is an increase (decrease) in the quality of an item, then the price is adjusted downwards (upwards) to reflect the 'worth' of the quality change. This technique is known as *pricing to constant quality*.

14 Another very important consideration in establishing and maintaining price collections is to ensure that the prices reported are actual market transaction prices. That is, they must reflect the net prices received (or paid) inclusive of all discounts applied to the transactions whether they be volume discounts, settlement discounts or competitive price cutting discounts which are likely to fluctuate with market conditions.

15 Any rebates also need to be considered. The collection of nominal list prices, or book prices, is unlikely to yield reliable price indexes and could result in quite misleading results if fluctuations in transaction prices are not captured. The ABS therefore asks respondent businesses to report details of the discounts they offer so that actual transaction prices can be calculated. In addition, as many different types of discounts apply to business-to-business transactions (see paragraph 14), considerable effort is put into monitoring discount practices in order to identify changes to existing discounts and the introduction of new ones.

16 Specification pricing is not feasible in cases where the products are unique and not reproduced over time, e.g. construction industry output and many of the customised business services. As a result alternative pricing techniques need to be used, often involving compromise. Some of the approaches adopted include the use of model pricing, collecting unit values for reasonably homogeneous components of a good or service, input pricing and collecting charge-out rates (e.g. for a legal service).

Classifications

17 As far as possible the industry sector indexes have been constructed in accordance with the Australian and New Zealand Standard Industrial Classification (ANZSIC). The Stage of Production 'contribution to change' tables (tables 5–9) are also presented in terms of the ANZSIC.

STAGE OF PRODUCTION (SOP) PRODUCER PRICE INDEXES

Introduction

18 Tables 1–9 present producer price indexes for the supply of commodities to the Australian economy in a stage of production (SOP) framework. As such, the indexes cover both domestically produced and imported commodities, individually and in aggregate. The SOP indexes are compiled from data used in

EXPLANATORY NOTES *continued*

Introduction continued

the industry sector indexes, the international trade indexes and some additional data collections. The indexes are calculated on the reference base 1998–99 = 100.0.

19 These indexes are compiled within the statistical framework outlined in the 1997 ABS Information Paper: *An Analytical Framework for Price Indexes in Australia* (Cat. no. 6421.0) and are designed to support the study of inflation.

20 A more detailed explanation of the SOP concept is contained in the ABS Information Paper: *Producer Price Index Developments* (Cat. no. 6422.0), released on 25 March 1999. The index numbers in this current publication cannot be directly compared with the experimental index numbers in the information paper because:

- the coverage of the series has been expanded to include selected service and construction industries; and
- the weighting patterns of the indexes have been updated to 1994–95 and the reference base of the indexes has been updated to 1998–99 = 100.0.

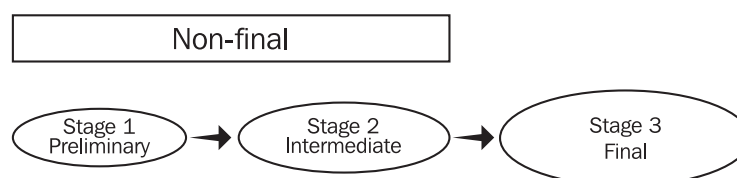
Pricing basis

21 In concept the valuation basis of the SOP indexes is basic prices (see paragraphs 4–8). However, the use of component series from existing ABS price collections in some cases results in the pricing basis diverging from this ideal. For example, imports are priced on a 'free-on-board' (f.o.b) basis, not 'cost, insurance, freight' (c.i.f), which approximates basic prices.

The SOP concept

22 The indexes are compiled using the SOP concept. Under this concept flows of commodities are categorised according to their economic destination on a sequential basis along the production chain. The basis for the categorisation is the Australian input–output tables (1994–95). The primary categorisation is between final commodities (i.e. commodities destined for final consumption, capital formation or export) and non-final commodities (i.e. commodities that flow into intermediate consumption for further processing).

23 This initial breakdown of the commodity flows into *final* and *non-final* represents a useful economic dissection of producers' transactions. However, the non-final commodities can flow into the production of both final and other non-final commodities. Therefore, to aid analysis, the non-final commodity flows have been divided on a sequential basis between Stage 1 (or preliminary) commodities and Stage 2 (or intermediate) commodities as illustrated below. This approach results in three separate stages of production.



24 The three stages are not aggregated in order to avoid the potential distorting effects that may result from multiple counting of changes in transaction prices as commodities flow through different production processes.

25 Under this framework, preliminary (Stage 1) commodities are used in the production of intermediate (Stage 2) commodities; in turn intermediate (Stage 2) commodities flow into the production of final (Stage 3) commodities.

26 The framework allows for analyses of price change as commodities flow through production processes. Price changes for earlier stages of production may be indicators of possible future price changes for later stages.

EXPLANATORY NOTES *continued*

Transaction flow approach

27 The ABS has adopted a transaction flow approach in disaggregating commodity supply into the various production stages. This approach means that the assignment of a commodity to a stage is based on the proximity of its use in final demand.

28 Alternative degree of fabrication or principal destination approaches are employed by statistical agencies in some other countries. These approaches result in the allocation of particular commodities to one, and only one, stage. This would present particular problems for Australia due to the openness of the economy, with exports (and imports) equivalent to about 20% of gross domestic product. Commodities such as wheat, wool, and iron ore are exported in large volumes as well as being further processed locally. The allocation of such commodities to a single stage would be very arbitrary by necessity.

29 Adopting the transaction flow approach means, for example, that exported wheat and domestically used wheat are treated as different commodities for index construction purposes. Under this approach commodities transactions can be allocated to more than one stage. Exported wheat is treated as a final (Stage 3) commodity while wheat used domestically to make the flour used in bread production is considered to be a preliminary (Stage 1) commodity. Similarly, commodities such as energy and containers appear under all three categories.

Scope and coverage

30 Producer price indexes conventionally relate to the output of domestic industries, at basic prices, either inclusive or exclusive of exports. As the main focus is on domestic inflation, exports are excluded from the headline SOP series 'Final (Stage 3) commodities', as presented in the key figures on the front page and in tables 1–9. Index series for Final (Stage 3) commodities including exports are available on request (see paragraph 89).

31 Imports have also been incorporated within the framework, recognising that they represent an important potential source of inflationary pressure.

32 In concept, the SOP indexes incorporate all flows of goods and services. However, currently there is limited coverage of service industries and the construction industry by the producer price indexes (see sections on construction industry and service industries producer price indexes below).

33 Price indexes for most transport and storage services (division I of ANZSIC) and property and business services (division L of ANZSIC) industries have been included in the SOP framework. However, price series for most Final (Stage 3) consumer services are not currently available on a sufficiently timely basis to allow their inclusion in the indexes. This has the effect of decreasing the relative weight of consumer items versus capital items in the final stage. It is intended to introduce additional services price series as they become available, along with the consequential weight changes.

34 Index coverage for the construction industry (division E of ANZSIC) is currently limited to the output of the following ANZSIC classes:

- 4111 House construction;
- 4112 Residential building construction n.e.c.;
- 4113 Non-residential building construction; and
- 4121 Road and bridge construction.

35 As with services, it is intended to introduce further construction price series as they become available.

Items and weights

36 The items included in the indexes reflect the values of commodity flows, for both domestic supply and imports, allocated to stages based on an analysis of detailed 1994–95 input–output tables. The index structures and weighting

EXPLANATORY NOTES *continued*

Items and weights continued

patterns for the SOP indexes are shown in the June quarter 2000 issue of the former publication *Stage of Production Producer Price Indexes, Australia* (Cat. no. 6426.0).

Comparisons with the Consumer Price Index

37 Final (Stage 3) indexes are presented for consumer commodities. It should be noted that this index is not directly comparable with the Consumer Price Index (CPI). The two indexes differ significantly in concept and coverage. The major differences are:

- the pricing basis for the Final (Stage 3) SOP consumer index is basic prices (see paragraph 21). The CPI, however, measures changes in purchasers' prices, i.e. the actual retail prices paid by households for products, inclusive of non-deductible taxes on products, such as the GST, and any transport and trade margins;
- the coverage of the two indexes differs. Currently the Final (Stage 3) SOP consumer index mainly measures changes in the prices of goods, i.e. most household services are currently excluded from the index (see paragraph 33). The CPI covers both goods and services;
- the indexes have different weighting bases. The weighting pattern for the Final (Stage 3) SOP consumer index is based on the 1994-95 input-output tables, while the CPI weighting pattern is based on the 1998-99 Household Expenditure Survey.

MANUFACTURING INDUSTRY PRODUCER PRICE INDEXES

Introduction

38 The manufacturing industry producer price indexes relate to the outputs (i.e. articles produced) and inputs (i.e. materials used) of establishments classified to designated sectors of the Australian manufacturing industry. They are important sources of data for the SOP indexes.

39 Tables 10 and 11 present the Price Indexes of Articles Produced by Manufacturing Industries and tables 12-14 present the Price Indexes of Materials Used in Manufacturing Industries. Basic prices are used for the output index and purchasers' prices for the input index (see paragraphs 4-8). Therefore, as far as possible, ex-factory prices are included in the output index and delivered into factory prices in the input index.

40 Table 15 presents Price Indexes of Copper Materials used in the manufacture of electrical equipment.

41 All of the manufacturing indexes are calculated on the reference base 1989-90 = 100.0.

Scope

42 The manufacturing indexes are constructed on a net sector basis with intra-sector transactions netted out. The scope of the output index is therefore restricted to transactions in articles produced by the defined sector of Australian manufacturing industry that are sold or transferred to domestic establishments outside that sector, or used as capital equipment, or exported. The scope of the input index relates to transactions in materials used in the defined sector of Australian manufacturing industry that are produced by domestic establishments outside that sector or imported.

Classification

43 The manufacturing division output index (table 10) measures changes in prices of articles produced by establishments classified to ANZSIC division C, Manufacturing, that are sold or transferred to domestic establishments outside the manufacturing division for intermediate use, or used as capital equipment, or exported. It excludes intermediate transactions in articles produced by

EXPLANATORY NOTES *continued*

Classification continued

establishments within the manufacturing division and sold or transferred to other establishments within the manufacturing division for further processing.

44 Similarly, the manufacturing division input index (tables 12 and 13) measures changes in prices of materials used by establishments classified to ANZSIC division C, Manufacturing, that have been purchased or transferred in from domestic establishments outside the manufacturing division or imported. It excludes intermediate transactions in materials produced by establishments within the manufacturing division and sold or transferred to other establishments within the manufacturing division for further processing.

45 An advantage of the net sector approach over the alternative gross sector approach (under which the intra-sector transactions would be in-scope) is that it avoids the potential distorting effects that may result from multiple counting of changes in transaction prices as commodities flow through different production processes.

46 On the other hand, although conceptually valid, the exclusion of the internal intermediate transactions from the net sector manufacturing division indexes results in incomplete coverage of the targeted sector of the economy. In order to increase coverage, while still avoiding the multiple counting issue, independent net sector measures have been constructed for ANZSIC manufacturing subdivisions and groups. While having intermediate transactions between different manufacturers within a given subdivision or group netted out, intermediate transactions with manufacturers in other subdivisions/groups are in-scope.

47 The output indexes for ANZSIC subdivisions and groups (table 11) measure changes in prices of articles produced by establishments classified to each defined ANZSIC manufacturing sector which are sold or transferred to establishments outside that sector. These exclude intermediate transactions in articles produced by establishments within the specific sector and sold or transferred to other establishments in the same sector for further processing.

48 Similarly, the input indexes for ANZSIC subdivisions and groups (table 14) measure changes in prices of materials used by establishments classified to each defined ANZSIC manufacturing sector which are purchased or transferred in from establishments outside that sector. These exclude intermediate transactions in materials produced by establishments within the specific sector and sold or transferred to other establishments in the same sector for further processing.

49 It is important to note that the manufacturing division output and input indexes, and the corresponding subdivision/group indexes, are independent constructs. As such, a division index cannot be derived by simply weighting together the separate subdivision and group indexes as the latter net sector indexes are not a straightforward decomposition of the broader net sector index.

Items and weights

50 The items included in the manufacturing indexes reflect the values of articles produced and materials used based on an analysis of detailed input-output tables; 1993-94 for the output indexes and 1989-90 for the input indexes.

51 The index structures and weighting patterns are shown in Appendix A of the September quarter 2000 issue of the former publication *Price Indexes of Articles Produced by Manufacturing Industry, Australia* (Cat. no. 6412.0), and Appendix A of the July 1996 issue of the former publication *Price Indexes of Materials Used in Manufacturing Industries, Australia* (Cat. no. 6411.0).

EXPLANATORY NOTES *continued*

Items and weights continued

52 A detailed description of the copper materials indexes is shown in the Appendix to the June 1984 issue of the former publication *Price Indexes of Metallic Materials, Australia* (Cat. no. 6410.0).

CONSTRUCTION INDUSTRY PRODUCER PRICE INDEXES

Introduction

53 The construction industry producer price indexes relate to the outputs (e.g. buildings) and the inputs (i.e. materials used) of establishments classified to designated sectors of the Australian construction industry. They are important sources of data for the SOP index.

54 Table 16 presents the Price Index of the Output of the Building Industry. Tables 17 and 18 present the Price Index of Materials Used in House Building and tables 19 and 20 present the Price Index of Materials Used in Building Other than House Building. The pricing basis is basic prices for the output index and purchasers' prices for the input indexes (see paragraphs 4–8 above). Therefore, as far as possible, builders' selling prices are reflected in the output index and delivered on site prices in the input indexes.

55 The output index is calculated on the reference base 1998–99 = 100.0 and the input indexes on the reference base 1989–90 = 100.0.

Scope

56 The Output of the Building Industry index (table 16) measures changes in prices of the output of ANZSIC Group 411 – building construction.

57 The first input index measures changes in prices of materials used in house building, where a house is defined as a detached building predominantly used for long-term residential purposes and consisting of only one dwelling unit. ANZSIC class 4111 (house construction) approximates the industry scope of the index.

58 The second input index measures changes in prices of materials used in other forms of building with a scope approximating ANZSIC class 4112 (residential building construction n.e.c.) and class 4113 (non-residential building construction), together.

59 Neither of the input indexes explicitly cover alterations, additions, renovations and repairs. They each relate to the statistical division for each State capital city.

Items and weights

60 The items included in the output index are chosen on the basis of work done, categorised by function and State of activity, as recorded in the ABS Building Activity statistics for the five years ending 1998–99.

61 The items and weights for the house building input index were derived from reported values of each material used in selected representative houses in the three years ending 1992–93, with individual weighting patterns for each State capital city reflecting the differences in the relative usage of different materials. For the other than house building index, the items were selected and allocated weights in accordance with estimated values of materials used in the construction of buildings other than houses completed in each of the capital cities in the five years ended June 1992. This same weighting pattern is used for each of the six State capital cities.

62 The weighting patterns are set out in Appendix A of the December 1995 issue of the former publication *Price Index of Materials Used in House Building, Six State Capital Cities* (Cat. no. 6408.0), and Appendix A of the October 1993 issue of the former publication *Price Index of Materials Used in Building Other than House Building, Six State Capital Cities* (Cat. no. 6407.0).

EXPLANATORY NOTES *continued*

MINING INDUSTRY PRODUCER PRICE INDEXES

63 Table 21 presents Price Indexes of Materials Used in Coal Mining. The pricing basis of the index is purchasers' prices (see paragraphs 4–8) and, as far as possible, the prices included in the index for items are delivered to the mine site or to the primary storage area for a group of mines.

64 The items included in the indexes reflect the value of materials used in the operation of open cut and underground coal mines in Australia during 1999–2000. The index structures and weighting patterns are available on request.

65 The indexes are calculated on the reference base 1989–90 = 100.0.

SERVICE INDUSTRIES PRODUCER PRICE INDEXES

Introduction

66 Tables 22–25 present producer price indexes for the output of the transport (freight) & storage division, and the property & business services division of the ANZSIC. Included are index numbers for each of the divisions and subdivisions. Transport indexes presented cover freight activities only. That is, passenger transport is excluded. The pricing basis of the indexes is basic prices (see paragraphs 4–8), and so the prices used in the index relate to the amount received by the service provider. The indexes are important sources of data for the SOP indexes. The index numbers are calculated on the reference base 1998–99 = 100.0.

67 These indexes represent the results to date of a program to progressively extend the scope of the producer price indexes into the service sectors of the economy. First results from the program were published in March 1999, by way of experimental indexes, in the ABS Information Paper: *Producer Price Index Developments* (Cat. no. 6422.0).

Scope

68 The transport (freight) & storage division and property & business services division indexes measure changes in prices of services provided by establishments classified respectively to ANZSIC division I, transport (freight) & storage and ANZSIC division L, property & business services. Index numbers for these divisions are provided in tables 22 and 24 respectively.

69 Tables 23 and 25 contain index numbers for the subdivisions of the ANZSIC transport (freight) & storage division I, and the subdivisions and groups of the ANZSIC property & business services division L, respectively.

Items and weights

70 ANZSIC class indexes are aggregated to the relevant group, subdivision and division using weights derived from 1994–95 input-output production values, in combination with data from other ABS surveys and industry sources.

Price measurement

71 The development of these new price collections has involved a wide range of diverse industries with different measurement problems. Accordingly, extensive consultation with industry associations and individual businesses has been undertaken to determine the most viable approach, on a case-by-case basis.

72 Characteristics found within the services sector of the economy have complicated the task of price measurement.

73 The tendency within many industries to provide unique, one-off services tailored to the needs of individual customers has posed difficulties in establishing continuity of pricing to constant quality.

74 The 'bundling' of a range of different component services within the one transaction or contract has required investigation of the feasibility of 'unbundling', that is, obtaining separate prices for each of the components of the

EXPLANATORY NOTES *continued*

Price measurement continued

total service. Where this has not proven to be feasible, the whole service bundle has been priced in total.

75 Respondent businesses are asked to report details of any discounts they offer so that actual transactions prices can be calculated. However, as discounts are sometimes negotiated between individual buyers and sellers in relation to particular transactions, identifying discounts has not always been straightforward.

76 The deregulation of some service industries leads to structural changes and more complex pricing practices. To deal with this, samples are continually updated to incorporate new businesses and pricing methodologies are reviewed over time.

Future developments

77 It is planned to make available indexes for the remaining ANZSIC classes within the transport (freight) & storage division and property & business services division after they develop from experimental to production status. At such time these new indexes would contribute to the broader group, subdivision and division indexes presented in this publication. Work will also commence on developing indexes for other divisions of the ANZSIC.

INDEX NUMBERS

78 Index numbers for financial years are simple averages of the relevant quarterly index numbers.

79 Indexes for the Price Index of Materials Used in House Building and the Price Index of Materials Used in Building Other than House Building are presented separately for each of the six State capital cities. These city indexes measure price movements over time for each city. They do not measure differences in price levels between cities.

ANALYSIS OF INDEX CHANGES

80 Care should be exercised when interpreting quarter-to-quarter movements in the indexes as short-term movements do not necessarily indicate changes in trend.

81 Movements in indexes from one period to another can be expressed either as changes in 'index points' or as percentage changes. The following example illustrates the method of calculating index points changes and percentage changes between any two periods:

82 Stage of Production: Final commodities index numbers -

June Quarter 2001	108.5	(see table 1)
less June Quarter 2000	104.9	(see table 1)
Change in index points	3.6	
Percentage change	$3.6/104.9 \times 100 = 3.4$	

83 Tables 5, 6 and 7 provide analyses of the index points contribution which ANZSIC groups make to the stage of production final commodities indexes, in total, and then separately for domestic and imported commodities. For example, in table 5 petroleum refining contributed 3.86 index points to the Total Final commodities index number of 108.5 for June quarter 2001 and 0.39 index points to the net change of 1.6 index points between the March and June quarters 2001.

84 Tables 8 and 9 analyse the contributions to the intermediate and preliminary commodities index numbers, respectively.

85 Similar contribution tables are available on request for most of the industry sector indexes (see paragraph 89 below).

EXPLANATORY NOTES *continued*

FURTHER INFORMATION

86 Further information on recent price index developments in the ABS is presented in the following publications:

An Analytical Framework for Price Indexes in Australia (Cat. no. 6421.0)

Producer Price Index Developments (Cat. no. 6422.0)

Review of the Import Price Index and Export Price Index, Australia
(Cat. no. 6424.0)

Price Indexes and The New Tax System (Cat. no. 6425.0)

RELATED PUBLICATIONS

87 Users may also wish to refer to the following related publications, which are available from ABS bookshops:

International Trade Price Indexes, Australia (Cat. no. 6457.0)

Consumer Price Index, Australia (Cat. no. 6401.0)

Wage Cost Index, Australia (Cat. no. 6345.0)

Australian National Accounts, Input-Output Tables (Cat. no. 5209.0)

Balance of Payments and International Investment Position, Australia
(Cat. no. 5302.0)

88 Current publications produced by the ABS are listed in the *Catalogue of Publications and Products, Australia* (Cat. no. 1101.0). The ABS also issues, on Tuesdays and Fridays, a *Release Advice* (Cat. no. 1105.0) which lists publications to be released in the next few days. The Catalogue and Release Advice are available from any ABS office.

ABS DATA AVAILABLE ON REQUEST

89 As well as the statistics included in this and related publications, the ABS has available other price index series (many at a detailed commodity level). Inquiries should be made to Lee Taylor 02 6252 6377.

FOR MORE INFORMATION . . .

- INTERNET* **www.abs.gov.au** the ABS web site is the best place to start for access to summary data from our latest publications, information about the ABS, advice about upcoming releases, our catalogue, and Australia Now—a statistical profile.
- LIBRARY* A range of ABS publications is available from public and tertiary libraries Australia-wide. Contact your nearest library to determine whether it has the ABS statistics you require, or visit our web site for a list of libraries.
- CPI INFOLINE* For current and historical Consumer Price Index data, call 1902 981 074 (call cost 77c per minute).
- DIAL-A-STATISTIC* For the latest figures for National Accounts, Balance of Payments, Labour Force, Average Weekly Earnings, Estimated Resident Population and the Consumer Price Index call 1900 986 400 (call cost 77c per minute).

INFORMATION SERVICE

Data that is already published and can be provided within five minutes is free of charge. Our information consultants can also help you to access the full range of ABS information—ABS user pays services can be tailored to your needs, time frame and budget. Publications may be purchased. Specialists are on hand to help you with analytical or methodological advice.

- PHONE* **1300 135 070**
- EMAIL* **client.services@abs.gov.au**
- FAX* 1300 135 211
- POST* Client Services, ABS, GPO BOX 796, Sydney NSW 1041

WHY NOT SUBSCRIBE ?

ABS subscription services provide regular, convenient and prompt deliveries of ABS publications and products as they are released. Email delivery of monthly and quarterly publications is available.

- PHONE* 1300 366 323
- EMAIL* subscriptions@abs.gov.au
- FAX* 03 9615 7848
- POST* Subscription Services, ABS, GPO BOX 2796Y, Melbourne Vic 3001



2642700006012
ISSN 1445 2618

RRP \$22.00



SUPPLEMENT

**PRODUCER
PRICE INDEXES**

AUSTRALIA

EMBARGO: 11:30AM (CANBERRA TIME) MON 23 JUL 2001

C O N T E N T S

	<i>page</i>
Notes	2
TABLES	
List of Tables	3
6426.0 Stage of Production, Producer Price Indexes, Australia	4
6412.0 Price Indexes of Articles Produced by Manufacturing Industry, Australia	6
6411.0 Price Indexes of Material Used in Manufacturing Industries, Australia	7
6408.0 Price Index of Materials Used in House Building, Six State Capital Cities	9
6407.0 Price Index of Materials Used in Building Other Than House Building, Six State Capital Cities	11
6423.0 Producer Price Indexes for Selected Service Industries, Australia ..	27

- For further information about this supplement, contact Lee Taylor on Canberra 1800 155 166.

NOTES

IMPORTANT NOTE

This document has been provided exclusively to 2001 subscribers of the former publications: *Price Index of Materials Used in Building Other Than House Building, Six State Capital Cities* (Cat. no. 6407.0); *Price Index of Materials Used in House Building, Six State Capital Cities* (Cat. no. 6408.0); *Price Indexes of Copper Materials, Australia* (Cat. no. 6410.0); *Price Indexes of Materials Used In Manufacturing Industries, Australia* (Cat. no. 6411.0); *Price Indexes of Articles Produced by Manufacturing Industry, Australia* (Cat. no. 6412.0); *Price Indexes of Materials Used in Coal Mining, Australia* (Cat. no. 6415.0); *Producer Price Indexes for Selected Service Industries, Australia* (Cat. no. 6423.0); *Stage of Production Producer Price Indexes, Australia* (Cat. no. 6426.0); in conjunction with the new compendium publication, *Producer Price Indexes, Australia* (Cat. no. 6427.0). It contains tables from these former publications which have not been included in the new publication, to ensure 2001 subscribers continue to receive all data previously published. This document is not intended for separate sale or distribution, and will be discontinued in 2002 when the tables contained within become available at low cost through accessing the ABS website <www.abs.gov.au>.

A special telephone service has been set up to assist users with this transition. If you have any queries or requests for data, please contact Lee Taylor on 1800 155 106.



Dennis Trewin
Australian Statistician

LIST OF TABLES

		page
	STAGE OF PRODUCTION, PRODUCER PRICE INDEXES, AUSTRALIA (6426.0)	
26	Index points, final commodities, by source and destination, including exports	4
27	Percentage change, final commodities, by source and destination, including exports	5
	PRICE INDEXES OF ARTICLES PRODUCED BY MANUFACTURING INDUSTRY, AUSTRALIA (6412.0)	
28	Manufacturing division index, contribution of subdivisions and groups	6
	PRICE INDEXES OF MATERIALS USED IN MANUFACTURING INDUSTRIES, AUSTRALIA (6411.0)	
29	Manufacturing division index, contribution of materials by ANZSIC industry of origin	7
30	Indexes of metallic materials used in the fabricated metal products industry	8
	PRICE INDEX OF MATERIALS USED IN HOUSE BUILDING, SIX STATE CAPITAL CITIES (6408.0)	
31	House building materials price index, contribution to all groups index	9
32	House building materials price index, by materials group	10
	PRICE INDEX OF MATERIALS USED IN BUILDING OTHER THAN HOUSE BUILDING, SIX STATE CAPITAL CITIES (6407.0)	
33	All groups index, contribution of major building materials	11
34	Selected ANZSIC groups, index numbers	12
35	Selected building materials, index numbers	13
36	Selected major building materials, index numbers, Sydney and Melbourne	16
37	Selected major building materials, index numbers, Brisbane and Adelaide	17
38	Selected major building materials, index numbers, Perth and Hobart	18
39	Special series, index numbers, weighted average of six state capital cities	19
40	Special series, index numbers, Sydney and Melbourne	21
41	Special series, index numbers, Brisbane and Adelaide	23
42	Special series, index numbers, Perth and Hobart	25
	PRODUCER PRICE INDEXES FOR SELECTED SERVICE INDUSTRIES, AUSTRALIA (6423.0)	
43	Transport (freight) and storage division index, subdivision and group contributions	27
44	Property and business services, subdivision and group contributions	28
45	Transport (freight) and storage subdivision group and class indexes	29
46	Property and business services subdivision group and class indexes	32

INDEX NUMBERS(a), Final Commodities—by Source and Destination: Including Exports

Period	DOMESTIC.....				IMPORTS.....			TOTAL.....		
	Consumer	Capital	Exports	Total (incl. exports)	Consumer	Capital	Total	Consumer	Capital	Total (incl. exports)
1998-1999	100.0	100.0	100.0	100.0	100.0	100.0	100.0	100.0	100.0	10.0
1999-2000	103.6	104.9	103.4	104.0	96.6	94.6	95.7	102.2	103.0	102.8
2000-2001	107.2	108.2	123.8	110.9	105.7	102.0	104.0	106.9	107.0	109.9
1998										
September	100.5	98.9	105.2	101.3	102.9	104.1	103.5	101.0	99.9	101.6
December	99.6	99.4	100.8	99.9	101.2	102.2	101.7	99.9	99.9	100.1
1999										
March	99.6	100.1	98.0	99.3	99.1	99.4	99.2	99.5	99.9	99.3
June	100.2	101.6	96.0	99.5	96.7	94.4	95.6	99.5	100.3	98.9
September	102.2	102.5	96.9	100.8	95.2	93.2	94.2	100.8	100.8	99.8
December	102.6	104.1	101.0	102.7	95.8	94.0	95.0	101.2	102.2	101.5
2000										
March	104.0	105.9	105.0	105.0	95.8	93.4	94.7	102.4	103.6	103.5
June	105.7	107.1	110.7	107.6	99.7	97.9	98.9	104.5	105.3	106.3
September	106.2	107.4	112.6	108.5	101.4	97.3	99.5	105.3	105.5	107.1
December	106.7	108.3	119.7	111.0	106.6	103.3	105.1	106.7	107.4	110.1
2001										
March	106.8	108.5	119.4	111.0	105.1	102.1	103.7	106.5	107.3	109.9
June	108.9	108.5	123.8	113.0	109.6	105.3	107.6	109.0	107.9	112.2

(a) Base of each index: 1998-99 = 100.0

Table 6—6426.0: Stage of Production, Producer Price Indexes, Australia

PERCENTAGE CHANGE, Final Commodities—by Source and Destination: Including Exports

Period	DOMESTIC.....				IMPORTS.....			TOTAL.....		
	Consumer	Capital	Exports	Total (incl. exports)	Consumer	Capital	Total	Consumer	Capital	Total (incl. exports)
PERCENTAGE CHANGE FROM PREVIOUS YEAR										
1998-1999
1999-2000	3.6	4.9	3.4	4.0	-3.4	-5.4	-4.3	2.2	3.0	2.8
2000-2001	3.5	3.1	19.7	6.6	9.4	7.8	8.7	4.6	3.9	6.9
PERCENTAGE CHANGE FROM PREVIOUS PERIOD										
1998										
September
December	-0.9	0.5	-4.2	-1.4	-1.7	-1.8	-1.7	-1.1	0.0	-1.5
1999										
March	0.0	0.7	-2.8	-0.6	-2.1	-2.7	-2.5	-0.4	0.0	-0.8
June	0.6	1.5	-2.0	0.2	-2.4	-5.0	-3.6	0.0	0.4	-0.4
September	2.0	0.9	0.9	1.3	-1.6	-1.3	-1.5	1.3	0.5	0.9
December	0.4	1.6	4.2	1.9	0.6	0.9	0.8	0.4	1.4	1.7
2000										
March	1.4	1.7	4.0	2.2	0.0	-0.6	-0.3	1.2	1.4	2.0
June	1.6	1.1	5.4	2.5	4.1	4.8	4.4	2.1	1.6	2.7
September	0.5	0.3	1.7	0.8	1.7	-0.6	0.6	0.8	0.2	0.8
December	0.5	0.8	6.3	2.3	5.1	6.2	5.6	1.3	1.8	2.8
2001										
March	0.1	0.2	-0.3	0.0	-1.5	-1.2	-1.4	-0.2	-0.1	-0.2
June	2.0	0.0	3.7	1.8	4.3	3.1	3.8	2.3	0.6	2.1
PERCENTAGE CHANGE FROM CORRESPONDING PERIOD OF PREVIOUS YEAR										
1998										
September
December
1999										
March
June
September	1.7	3.6	-7.9	-0.5	-7.5	-10.5	-9.0	-0.2	0.9	-1.8
December	3.0	4.7	0.2	2.8	-5.3	-8.0	-6.6	1.3	2.3	1.4
2000										
March	4.4	5.8	7.1	5.7	-3.3	-6.0	-4.5	2.9	3.7	4.2
June	5.5	5.4	15.3	8.1	3.1	3.7	3.5	5.0	5.0	7.5
September	3.9	4.8	16.2	7.6	6.5	4.4	5.6	4.5	4.7	7.3
December	4.0	4.0	18.5	8.1	11.3	9.9	10.6	5.4	5.1	8.5
2001										
March	2.7	2.5	13.7	5.7	9.7	9.3	9.5	4.0	3.6	6.2
June	3.0	1.3	11.8	5.0	9.9	7.6	8.8	4.3	2.5	5.6

.. not applicable

— nil or rounded to zero (including null cells).

Table 2—6412.0 Price Indexes of Articles Produced by Manufacturing Industries, Australia

MANUFACTURING DIVISION INDEX, Contribution of Subdivisions and Groups

Category	March Qtr 2001	June Qtr 2001	Change	
Manufacturing division	127.7	130.7	3.0	
ANZSIC SUBDIVISION OR GROUP: Contribution to Manufacturing Division Index (index points)				
21	Food, beverages and tobacco	32.78	33.99	1.21
221-222	Textiles and textile products	2.73	2.77	0.04
223-226	Knitting mills, clothing, footwear and leather	4.31	4.34	0.03
231-232	Log, sawmilling and other wood products	3.25	3.24	-0.01
233	Paper and paper products	1.44	1.44	0.00
24	Printing, publishing and recorded media	6.56	6.58	0.02
251-252	Petroleum and coal products	12.52	13.60	1.08
253-254	Chemicals	7.73	7.79	0.06
255-256	Rubber and plastics	3.02	3.06	0.04
26	Non-metallic mineral products	5.21	5.21	0.00
271-273	Basic metal products	10.55	10.59	0.04
274-276	Fabricated metal products	6.32	6.36	0.04
281-282	Transport equipment and parts	13.52	13.69	0.17
283-286	Electronic equipment and other machinery	12.66	12.86	0.20
29	Other manufacturing	5.15	5.20	0.05

MANUFACTURING DIVISION INDEX, Contribution of Materials by ANZSIC Industry of Origin

<i>Industry of origin</i>	<i>March Qtr 2001</i>	<i>June Qtr 2001</i>	<i>Change</i>
Manufacturing division	130.3	137.7	7.4
Agriculture	32.81	35.21	2.40
Horticulture and fruit growing	2.23	2.27	0.04
Grain, sheep and beef cattle farming	18.53	20.32	1.79
Dairy cattle farming	6.02	6.54	0.52
Poultry farming	1.70	1.67	-0.03
Other livestock farming	1.78	1.75	-0.03
Other crop growing	2.55	2.67	0.12
Forestry and logging	1.53	1.54	0.01
Coal mining	0.97	1.00	0.03
Oil and gas extraction	24.57	26.74	2.17
Metal ore mining	9.58	9.94	0.36
Other mining	4.62	4.66	0.04
Construction material mining	2.55	2.54	-0.01
Other mining	2.07	2.12	0.05
Textile, clothing, footwear and leather manufacturing	6.22	6.36	0.14
Textile, fibre, yarn and woven fabric manufacturing	5.50	5.64	0.14
Knitting mills	0.35	0.36	0.01
Leather and leather product manufacturing	0.37	0.37	0.00
Wood and paper product manufacturing	6.20	6.27	0.07
Log sawmilling and timber dressing	1.70	1.80	0.10
Other wood product manufacturing	0.43	0.43	0.00
Paper and paper product manufacturing	4.07	4.05	-0.02
Petroleum, coal, chemical and associated product manufacturing	13.74	15.34	1.60
Basic chemical manufacturing	8.94	9.80	0.86
Other chemical product manufacturing	1.84	2.59	0.75
Rubber product manufacturing	0.96	0.96	0.00
Plastic product manufacturing	2.00	1.99	-0.01
Non-metallic mineral product manufacturing	0.75	0.81	0.06
Glass and glass product manufacturing	0.75	0.81	0.06
Metal product manufacturing	5.79	5.89	0.10
Iron and steel manufacturing	3.41	3.41	0.00
Non-ferrous basic metal product manufacturing	0.70	0.70	0.00
Fabricated metal product manufacturing	1.68	1.79	0.11
Machinery and equipment manufacturing	11.92	12.31	0.39
Motor vehicle and part manufacturing	5.89	6.07	0.18
Other transport equipment	0.36	0.37	0.01
Photographic and scientific equipment manufacturing	0.96	1.00	0.04
Electronic equipment manufacturing	1.47	1.47	0.00
Electrical equipment and appliance manufacturing	1.47	1.51	0.04
Industrial machinery and equipment manufacturing	1.77	1.88	0.11
Electricity and gas supply	11.57	11.67	0.10

INDEXES OF METALLIC MATERIALS USED IN THE FABRICATED METAL PRODUCTS INDUSTRY(a)

Period	Iron and steel	Aluminium	Copper and brass	Zinc
1997-1998	112.0	94.0	120.0	102.1
1998-1999	111.3	93.4	117.2	92.1
1999-2000	108.2	92.6	125.7	99.7
2000-2001	111.4	101.1	135.1	111.0
1997				
June	111.7	92.0	119.1	92.4
September	111.8	93.0	122.2	111.8
December	112.0	92.8	119.9	109.3
1998				
March	112.4	94.2	118.7	93.2
June	111.7	96.1	119.0	94.1
September	112.3	97.2	119.4	97.9
December	113.0	96.1	119.0	91.9
1999				
March	110.5	91.1	116.6	87.8
June	109.5	89.2	113.6	90.7
September	109.4	89.3	121.1	92.5
December	109.5	91.6	124.2	100.1
2000				
March	106.5	94.9	126.8	100.1
June	107.4	94.4	130.6	105.9
September	109.3	98.8	132.0	108.1
December	111.4	100.3	136.3	117.9
2001				
March	112.1	102.6	136.2	108.7
June	112.9	102.5	135.8	109.4

(a) Base of each index: 1989-90 = 100.0

Table 3—6408.0: Price Index of Materials Used in House Building, Six State Capital Cities

HOUSE BUILDING MATERIALS PRICE INDEX(a), Contribution to All Groups Index

Category	March Qtr 2001	June Qtr 2001	Change
Weighted average of six State capital cities	124.2	124.4	0.2
GROUPS: Contribution to Weighted average of six State capital cities index (index points)			
Concrete mix, cement and sand	8.22	8.18	-0.04
Cement products	7.30	7.27	-0.03
Ceramic products	16.88	16.93	0.05
Timber, board and joinery	36.06	36.01	-0.05
Steel products	5.47	5.45	-0.02
Other metal products	20.23	20.41	0.18
Plumbing products	8.54	8.69	0.15
Electrical equipment	4.45	4.46	0.01
Installed appliances	4.47	4.46	-0.01
Other materials	12.60	12.56	-0.04

(a) Base of each index: 1989-90 = 100.0

Table 4—6408.0: Price Index of Materials Used in House Building, Six State Capital Cities

HOUSE BUILDING MATERIALS PRICE INDEX(a), By Materials Group

WEIGHTED AVERAGE OF SIX STATE CAPITAL CITIES.....

<i>Period</i>	<i>Concrete mix, cement and sand</i>	<i>Cement products</i>	<i>Ceramic products</i>	<i>Timber, board and joinery</i>	<i>Steel products</i>	<i>Other metal products</i>	<i>Plumbing products</i>	<i>Electrical equipment</i>	<i>Installed appliances</i>	<i>Other materials</i>
1997-1998	114.0	117.2	115.2	118.8	120.1	115.3	118.3	115.1	130.4	122.4
1998-1999	112.8	117.5	116.9	120.6	119.5	117.3	116.7	116.3	130.6	125.4
1999-2000	111.5	120.9	118.0	127.1	116.6	121.4	123.1	118.9	131.5	127.7
2000-2001	108.9	122.3	121.1	133.3	114.4	124.3	119.6	116.9	120.9	127.1
1997										
June	113.9	116.5	113.7	116.9	119.1	114.3	116.3	115.5	129.3	121.1
September	114.2	116.2	114.3	117.3	119.1	114.6	117.9	115.0	130.0	121.3
December	114.2	117.1	114.4	118.3	120.1	115.1	118.2	114.9	130.8	122.1
1998										
March	113.9	117.9	115.8	119.9	120.6	115.0	119.0	114.6	130.0	122.5
June	113.8	117.7	116.1	119.8	120.5	116.5	118.2	115.7	130.6	123.5
September	113.4	117.6	117.0	121.0	119.0	116.8	117.7	115.6	130.7	124.0
December	113.1	117.5	116.9	121.3	120.4	117.3	115.8	116.3	130.9	125.5
1999										
March	112.4	117.0	117.0	120.7	119.8	117.5	116.5	116.5	130.6	125.5
June	112.4	117.7	116.5	119.4	118.9	117.7	116.6	116.6	130.3	126.6
September	112.3	119.4	116.6	121.2	117.9	119.7	120.2	118.2	131.7	127.1
December	111.9	120.2	116.9	123.9	116.2	120.6	120.6	119.6	131.5	127.5
2000										
March	110.8	121.4	118.2	130.2	116.4	121.6	124.7	119.0	131.2	128.0
June	110.8	122.4	120.3	133.2	115.8	123.6	126.8	118.9	131.6	128.2
September	109.5	122.2	120.8	134.3	115.3	124.1	118.7	116.2	119.8	126.3
December	109.5	122.5	120.8	134.0	114.0	123.5	118.9	117.3	121.1	126.8
2001										
March	108.5	122.4	121.2	132.5	114.3	124.3	119.2	117.0	121.4	127.7
June	107.9	121.9	121.5	132.3	113.8	125.4	121.4	117.1	121.3	127.4

(a) Base of each index: 1989-90 = 100.0

ALL GROUPS INDEX, Contribution of Major Building Materials

Category	March Qtr 2001	June Qtr 2001	Change
Weighted average of six State capital cities	116.7	117.2	0.5
GROUPS: Contribution to Weighted Average of six State capital cities index (index points)			
Structural timber	0.92	0.90	-0.02
Joinery products	4.99	5.00	0.01
Clay bricks	1.79	1.79	0.00
Ready mixed concrete	9.40	9.29	-0.11
Precast concrete products	4.53	4.54	0.01
Plaster and plaster products	1.71	1.72	0.01
Steel decking and cladding	3.48	3.47	-0.01
Structural steel	9.64	9.69	0.05
Reinforcing steel bar, fabric and mesh	7.06	7.04	-0.02
Aluminium windows	6.87	6.98	0.11
Aluminium screens, doors and louvres	2.09	2.12	0.03
Suspended ceilings and access floors	1.20	1.21	0.01
Fabricated steel products	3.92	3.94	0.02
Builders' hardware	1.59	1.64	0.05
Elevators, escalators and travelators	6.21	6.28	0.07
Sand and aggregate	0.14	0.14	0.00
Carpet	2.55	2.56	0.01
Paint and other coatings	1.31	1.31	0.00
Non-ferrous pipes and fittings	2.27	2.23	-0.04
Conductors	2.54	2.54	0.00
Switchboards and switchgear	2.36	2.39	0.03
Lamps and light fittings	2.11	2.15	0.04
Fire protection	3.64	3.66	0.02
Air conditioning equipment excluding piping and electrical materials	9.20	9.26	0.06

SELECTED ANZSIC GROUPS, Index Numbers(a)

WEIGHTED AVERAGE OF SIX STATE CAPITAL CITIES.....

Period	Wood and wood products (231-232)	Ceramics (262)	Cement, plaster and concrete products (263)	Iron and steel products (271)	Structural metal products (274)	Sheet metal products (275)	Fabricated metal products (276)	Electrical equipment and appliances (285)	Industrial machinery and equipment (286)	Other materials	All groups
1997-1998	117.6	115.8	112.3	119.5	112.0	120.4	125.7	114.1	110.7	115.1	114.2
1998-1999	119.1	117.5	113.0	120.3	112.2	120.4	125.9	115.3	115.3	114.8	115.2
1999-2000	122.1	119.7	112.7	121.1	111.4	121.9	128.3	118.1	116.6	117.7	116.1
2000-2001	126.5	120.3	111.9	124.0	113.0	115.2	130.4	118.6	109.5	121.2	116.4
1997											
June	116.2	113.2	111.6	120.0	111.8	120.4	125.6	115.1	110.0	115.5	113.9
September	116.7	114.1	111.7	119.8	111.7	120.5	125.8	115.5	109.9	115.7	114.0
December	117.4	115.4	111.8	119.7	112.1	120.3	125.9	114.1	110.2	115.1	114.0
1998											
March	118.4	116.7	112.4	119.4	112.0	120.4	125.6	113.2	110.6	114.7	114.1
June	118.0	117.1	113.2	119.2	112.1	120.4	125.3	113.6	112.0	115.0	114.5
September	118.7	117.2	113.2	120.0	112.1	121.2	125.5	113.9	112.9	115.4	114.8
December	119.3	116.9	113.0	120.5	112.4	120.9	125.8	115.0	115.9	114.3	115.2
1999											
March	119.4	117.4	112.9	120.5	112.2	119.6	125.8	115.9	116.1	114.3	115.2
June	119.0	118.3	113.0	120.3	112.2	119.7	126.3	116.3	116.2	115.3	115.4
September	119.8	118.1	112.9	119.4	110.4	120.4	128.1	116.5	116.6	116.0	115.2
December	120.2	119.0	112.7	120.0	110.7	121.4	128.2	117.8	116.0	116.7	115.4
2000											
March	123.1	120.3	112.6	121.4	111.8	122.4	128.1	118.6	116.3	118.0	116.4
June	125.1	121.5	112.7	123.7	112.6	123.5	128.6	119.3	117.4	120.0	117.4
September	126.2	119.6	112.1	123.8	112.5	114.4	129.5	116.0	109.2	118.2	115.5
December	127.0	119.6	112.3	124.3	112.2	115.0	129.4	118.5	110.0	121.1	116.3
2001											
March	126.4	120.1	111.9	124.2	113.3	115.4	130.5	119.3	109.0	122.5	116.7
June	126.5	122.0	111.3	123.6	113.9	115.9	132.2	120.5	109.9	123.0	117.2

(a) Base of each index: 1989-90 = 100.0

SELECTED BUILDING MATERIALS, Index Numbers(a)

WEIGHTED AVERAGE OF SIX STATE CAPITAL CITIES.....

<i>Period</i>	<i>Structural timber</i>	<i>Hardwood</i>	<i>Softwood</i>	<i>Plywood and board</i>	<i>Joinery products</i>	<i>Ceramic sanitary-ware</i>	<i>Ceramic tiles</i>	<i>Clay bricks</i>	<i>Cement</i>	<i>Ready mixed concrete</i>
1997-1998	121.7	121.6	129.2	109.0	118.0	143.8	97.6	114.6	117.2	107.2
1998-1999	125.4	126.8	133.0	108.7	119.6	142.6	98.0	119.1	118.4	106.3
1999-2000	131.1	138.1	137.9	110.9	122.2	144.0	98.3	123.7	118.9	103.6
2000-2001	134.3	150.5	139.5	114.2	127.1	137.4	100.1	128.0	119.8	99.7
1997										
June	118.0	120.1	124.9	108.9	116.7	139.5	97.9	110.4	116.8	107.5
September	119.6	120.4	126.8	108.6	117.1	139.6	98.0	112.7	116.3	107.5
December	119.9	120.8	127.2	108.9	118.1	144.2	97.9	112.7	117.2	107.2
1998										
March	123.0	121.5	130.9	109.8	118.7	146.1	97.3	115.5	117.4	106.9
June	124.1	123.7	131.8	108.8	118.2	145.1	97.2	117.3	117.9	107.0
September	125.8	125.2	133.7	108.7	118.9	143.3	98.0	117.9	117.9	107.0
December	126.2	127.5	133.8	108.5	119.8	142.0	97.7	118.4	118.9	106.6
1999										
March	125.9	127.5	133.4	108.8	119.9	142.0	98.2	119.3	118.0	105.9
June	123.8	126.8	130.9	108.6	119.7	143.1	98.2	120.6	118.6	105.7
September	124.6	129.9	131.3	110.0	120.3	143.9	97.9	120.0	118.6	104.9
December	128.8	134.3	135.7	110.2	120.1	144.0	98.0	122.1	118.8	104.2
2000										
March	133.2	140.4	140.0	111.5	123.2	144.0	97.6	125.7	119.0	102.9
June	137.8	147.8	144.4	111.9	125.1	144.1	99.5	127.0	119.3	102.4
September	138.6	149.7	145.1	113.8	126.1	135.3	99.7	128.0	118.9	101.1
December	136.7	149.6	142.7	115.0	127.1	135.3	99.6	128.0	119.5	100.6
2001										
March	132.2	151.5	136.7	113.7	127.4	136.5	100.1	128.0	121.0	99.2
June	129.5	151.0	133.4	114.4	127.9	142.5	101.0	128.0	119.9	98.0

(a) Base of each index: 1989-90 = 100.0

Table 5—6407.0: Price Index of Materials Used in Building other than House Building, Six State Capital Cities

SELECTED BUILDING MATERIALS, Index Numbers(a) *continued*

WEIGHTED AVERAGE OF SIX STATE CAPITAL CITIES.....

Period	Precast concrete products	Concrete masonry blocks	Plaster and plaster products	Fibrous cement products	Steel decking and cladding	Cast iron pipes and products	Structural steel	Reinforcing steel bar, fabric and mesh	Aluminium windows	Aluminium screens, doors, louvres
1997-1998	120.7	120.3	119.9	124.2	114.9	132.7	113.1	112.7	109.0	116.1
1998-1999	123.8	127.0	122.5	122.3	114.4	135.4	113.4	109.9	110.5	119.1
1999-2000	127.4	130.5	125.4	123.6	114.9	136.3	112.0	104.5	114.3	121.4
2000-2001	133.0	133.4	126.0	124.5	118.5	132.5	113.1	102.4	119.9	127.5
1997										
June	118.8	115.2	118.1	123.1	115.5	133.5	112.9	112.9	108.7	117.1
September	119.3	116.0	118.5	123.5	115.4	133.5	112.9	113.2	108.5	115.4
December	119.2	116.1	120.7	124.2	115.2	133.6	113.6	112.7	109.0	115.1
1998										
March	120.7	123.6	120.1	124.9	114.5	131.9	112.9	112.7	108.8	116.1
June	123.4	125.4	120.4	124.3	114.3	131.9	112.8	112.1	109.8	117.6
September	123.4	125.9	120.4	123.4	114.7	135.4	113.3	110.7	109.8	117.6
December	123.3	126.1	122.2	122.7	114.5	135.6	113.2	110.6	110.5	120.2
1999										
March	124.6	126.9	122.7	120.6	114.3	135.3	113.5	109.6	110.5	119.3
June	124.0	128.9	124.5	122.3	114.1	135.3	113.6	108.8	111.1	119.4
September	125.2	129.1	125.5	122.5	113.2	137.2	111.3	104.8	111.5	118.9
December	125.9	129.4	125.5	123.5	113.6	136.2	112.2	103.4	112.6	119.8
2000										
March	128.5	131.2	125.3	123.7	114.6	135.5	112.3	105.2	114.6	121.8
June	130.1	132.4	125.2	124.5	118.2	136.1	112.3	104.5	118.3	125.1
September	131.0	132.3	124.9	124.1	118.0	136.2	113.0	102.1	119.3	126.8
December	132.4	133.4	125.9	124.9	118.5	134.3	111.9	101.5	119.6	127.0
2001										
March	134.0	133.4	126.2	125.4	118.9	131.5	113.4	103.2	119.5	127.4
June	134.6	134.4	126.9	123.5	118.6	128.0	114.0	102.8	121.3	128.7

(a) Base of each index: 1989-90 = 100.0

SELECTED BUILDING MATERIALS, Index Numbers(a) *continued*

WEIGHTED AVERAGE OF SIX STATE CAPITAL CITIES.....

Period	Suspended ceilings and access floors	Fabricated steel products	Sheet steel sanitary-ware	Builders' hardware	Sand and aggregate	Carpet	Paint and other coatings	Glass products	Non-ferrous pipes and fittings	Plastic floor coverings
1997-1998	106.1	116.2	121.0	120.0	121.0	103.0	136.0	110.2	135.6	113.3
1998-1999	109.5	117.7	118.3	123.4	121.9	102.3	142.7	111.1	128.6	116.4
1999-2000	109.4	117.8	117.8	130.0	122.8	101.8	148.8	115.1	131.5	117.6
2000-2001	112.8	118.9	111.8	135.9	123.6	96.5	152.2	127.2	141.0	110.2
1997										
June	104.9	115.1	122.2	118.3	120.9	103.7	135.0	113.1	131.4	113.5
September	104.9	115.8	122.3	118.7	121.0	103.2	135.3	113.1	134.5	113.7
December	105.3	116.3	121.2	119.0	121.1	102.2	135.7	109.0	138.0	113.7
1998										
March	106.4	116.5	120.5	120.8	121.2	103.5	135.4	108.4	135.4	112.4
June	107.6	116.1	120.1	121.5	120.7	103.0	137.7	110.4	134.6	113.3
September	108.8	117.4	118.7	122.2	121.7	103.3	138.5	110.7	134.0	116.5
December	110.2	117.6	120.5	122.9	121.7	102.5	143.2	110.8	126.7	116.3
1999										
March	109.6	117.7	116.9	123.5	122.2	101.8	144.2	110.7	126.8	116.4
June	109.3	118.1	117.0	124.9	122.0	101.5	144.8	112.0	126.8	116.4
September	109.2	117.6	117.3	128.8	122.1	101.5	145.5	112.7	127.8	116.0
December	109.1	117.4	117.1	129.0	122.0	101.8	148.2	112.7	132.9	115.5
2000										
March	109.4	118.2	117.3	129.2	123.8	101.5	150.7	114.3	133.2	118.4
June	110.0	118.0	119.4	133.1	123.3	102.4	150.7	120.7	132.1	120.3
September	110.3	117.6	112.0	134.9	122.3	95.5	151.2	120.8	135.0	108.8
December	111.8	118.5	111.9	133.3	122.4	96.2	152.8	128.1	140.4	111.5
2001										
March	113.9	119.4	112.0	135.7	124.9	97.0	152.6	129.1	145.5	110.3
June	115.3	119.9	111.2	139.8	124.9	97.3	152.2	130.8	143.2	110.3

(a) Base of each index: 1989-90 = 100.0

Table 6—6407.0: Price Index of Materials Used in Building other than House Building, Six State Capital Cities

SELECTED MAJOR BUILDING MATERIALS, Index Numbers(a)—Sydney and Melbourne

Period	Structural timber	Clay bricks	Ready mixed concrete	Precast concrete products	Steel decking and cladding	Structural steel	Reinforcing steel bar fabric and mesh	Aluminium windows	Fabricated steel products	Builders hardware	Sand and aggregate	Carpet	Paint and other coatings	Non-ferrous pipes and fittings
SYDNEY														
1997-1998	124.8	107.4	98.7	117.8	117.6	112.6	124.2	110.7	113.3	120.2	116.1	101.6	133.6	148.5
1998-1999	129.7	115.5	97.6	119.2	117.4	112.4	122.6	113.6	113.3	124.2	117.1	101.8	141.8	135.4
1999-2000	137.3	123.3	93.9	122.0	117.0	110.4	115.9	117.7	112.6	133.9	117.7	101.3	147.4	136.6
2000-2001	138.2	126.9	88.3	125.0	121.5	111.8	113.9	121.4	114.8	137.9	118.0	96.7	150.9	147.4
1997														
June	119.4	100.8	98.3	116.3	117.6	112.3	123.1	109.9	111.4	117.3	115.2	104.1	132.1	141.3
September	121.3	104.3	98.7	117.2	117.7	111.9	123.8	109.2	113.0	117.6	115.4	103.1	131.8	144.7
December	122.4	104.4	98.8	116.5	117.7	113.9	124.2	110.3	114.0	118.1	115.8	99.1	133.4	149.8
1998														
March	126.8	108.4	98.4	118.7	117.7	112.5	124.6	111.0	113.5	122.4	116.2	102.1	134.0	149.8
June	128.7	112.3	98.9	118.9	117.2	112.1	124.2	112.4	112.8	122.5	117.1	101.9	135.2	149.5
September	130.8	112.9	98.6	118.6	117.7	112.5	123.0	111.9	112.8	122.5	117.1	102.0	137.4	149.5
December	130.9	113.7	97.7	118.6	117.3	112.2	123.1	114.0	113.3	123.9	117.1	102.6	142.1	130.0
1999														
March	128.7	116.0	97.2	119.2	117.3	112.4	122.7	114.0	113.4	124.6	117.1	101.2	143.8	131.0
June	128.5	119.2	96.7	120.2	117.3	112.4	121.7	114.3	113.8	125.9	117.0	101.2	143.8	131.0
September	130.4	118.2	96.0	120.5	115.0	109.4	116.7	114.3	112.5	133.3	117.0	100.8	144.4	131.7
December	135.3	123.2	94.8	120.7	114.9	110.7	114.6	115.6	111.6	133.1	117.1	101.1	145.7	138.6
2000														
March	139.3	126.3	92.8	122.4	117.5	111.4	116.4	118.6	113.6	133.4	118.3	101.1	148.9	139.6
June	144.3	125.3	91.8	124.4	120.7	110.0	115.8	122.3	112.8	135.9	118.3	102.1	150.4	136.5
September	143.3	127.0	90.3	125.2	120.3	111.6	114.4	122.2	112.7	136.5	117.8	95.8	150.8	139.2
December	141.5	126.9	89.3	125.2	121.4	109.7	111.6	120.2	113.7	133.4	117.5	96.0	150.7	144.7
2001														
March	135.8	126.9	88.2	125.0	121.9	112.9	114.4	120.2	115.6	138.8	118.3	96.6	151.4	155.1
June	132.1	126.9	85.4	124.4	122.5	112.9	115.0	122.8	117.1	142.9	118.3	98.4	150.5	150.7
MELBOURNE														
1997-1998	115.6	117.9	111.4	115.7	109.4	104.9	100.8	100.0	120.0	119.6	116.3	102.6	144.7	113.0
1998-1999	116.2	119.6	112.9	123.9	108.0	104.9	99.5	100.4	124.7	122.7	120.5	100.1	153.8	111.2
1999-2000	118.5	123.8	110.8	130.9	109.3	101.3	93.8	105.1	125.6	127.6	120.6	98.9	162.4	116.6
2000-2001	122.9	130.6	108.1	144.1	112.9	100.8	89.2	113.1	125.5	135.5	122.0	94.4	167.5	127.8
1997														
June	112.8	114.6	112.0	111.8	111.3	105.1	100.6	100.5	119.3	117.8	116.8	102.9	142.3	112.6
September	114.4	116.1	111.2	111.8	110.4	105.1	100.6	100.4	119.3	118.6	116.4	102.9	143.5	113.8
December	115.3	116.1	111.4	112.4	110.5	105.1	100.8	100.7	119.5	119.5	116.4	102.9	143.5	118.7
1998														
March	115.8	119.6	111.5	115.0	108.3	104.7	100.8	99.2	120.6	119.8	116.0	102.9	143.5	110.2
June	116.8	119.7	111.3	123.5	108.3	104.8	100.8	99.7	120.6	120.3	116.4	101.5	148.3	109.4
September	118.3	119.7	112.4	123.6	108.3	104.8	100.3	99.7	124.6	121.4	119.6	101.9	148.6	109.4
December	117.7	119.6	113.5	122.6	108.3	104.8	99.9	100.0	124.6	122.2	119.6	99.9	155.0	111.8
1999														
March	116.6	119.6	112.5	126.6	108.1	104.9	99.1	100.1	124.6	122.9	121.3	99.6	154.9	111.8
June	112.0	119.3	113.2	122.7	107.2	105.0	98.5	101.6	125.1	124.4	121.3	98.8	156.6	111.8
September	113.1	119.3	111.6	126.6	107.8	101.2	93.7	102.0	125.1	125.0	121.3	99.4	158.0	112.9
December	117.6	119.3	111.3	127.5	108.5	102.0	92.6	103.6	125.5	125.7	120.2	99.3	163.0	117.6
2000														
March	119.9	126.3	110.3	133.6	108.0	100.8	94.7	104.9	125.6	126.0	120.2	98.0	164.3	117.6
June	123.2	130.3	110.1	135.8	113.0	101.0	94.0	110.0	126.1	133.6	120.6	98.7	164.1	118.2
September	126.2	130.2	108.6	138.2	113.2	101.2	89.3	111.5	124.1	135.2	118.3	93.5	165.3	120.8
December	123.8	130.7	109.5	142.2	112.7	99.8	88.8	113.2	125.9	134.2	118.6	94.4	168.5	127.7
2001														
March	122.0	130.7	107.1	146.6	113.7	100.2	90.3	113.3	126.1	134.2	125.5	96.1	167.3	131.1
June	119.7	130.6	107.2	149.2	111.9	102.0	88.4	114.5	126.0	138.4	125.5	93.7	169.0	131.5

(a) Base of each index: 1989-90 = 100.0

Table 7—6407.0: Price Index of Materials Used in Building other than House Building, Six State Capital Cities

SELECTED MAJOR BUILDING MATERIALS, Index Numbers(a)—Brisbane and Adelaide

Period	Structural timber	Clay bricks	Ready mixed concrete	Precast concrete products	Steel decking and cladding	Structural steel	Reinforcing steel bar fabric and mesh	Aluminium windows	Fabricated steel products	Builders hardware	Sand and aggregate	Carpet	Paint and other coatings	Non-ferrous pipes and fittings
BRISBANE														
1997-1998	113.0	106.1	106.6	112.2	113.7	136.6	116.0	103.8	122.9	103.6	154.4	94.8	130.3	161.6
1998-1999	120.5	105.9	104.2	114.7	114.0	140.3	112.4	106.3	124.3	108.1	145.7	95.7	134.3	158.7
1999-2000	127.5	104.8	100.2	116.6	113.2	141.7	109.8	109.4	126.2	112.7	148.9	96.4	139.0	160.4
2000-2001	129.2	110.1	98.0	117.0	114.7	141.8	109.8	113.1	121.7	118.6	147.1	91.7	144.0	163.6
1997														
June	110.8	106.1	107.3	113.0	113.7	136.1	116.0	103.8	123.1	104.4	156.6	94.7	129.3	158.2
September	111.9	107.1	108.8	113.2	113.7	137.8	116.8	103.8	122.8	104.4	157.4	94.2	129.9	161.7
December	110.5	105.8	105.4	113.2	113.7	136.5	115.9	103.8	122.8	101.7	157.3	94.8	129.8	161.6
1998														
March	114.8	105.8	105.8	110.7	113.7	136.0	115.5	103.8	123.5	101.7	157.3	94.8	129.8	161.6
June	114.9	105.8	106.4	111.5	113.8	136.0	115.6	103.8	122.5	106.5	145.5	95.2	131.6	161.6
September	114.9	106.2	106.3	112.8	114.0	139.1	113.6	105.6	123.5	106.8	145.6	95.7	130.5	156.1
December	122.7	106.8	104.5	115.2	114.0	139.3	113.6	106.5	123.4	106.8	145.6	95.7	134.3	161.4
1999														
March	124.9	105.6	104.3	115.2	114.0	141.2	110.9	106.5	124.6	108.4	145.7	95.7	136.6	158.6
June	119.3	105.0	101.7	115.6	114.0	141.6	111.3	106.5	125.6	110.5	145.7	95.7	135.9	158.6
September	119.3	100.3	102.1	115.6	112.4	142.4	110.5	108.5	125.7	113.7	145.7	95.7	135.9	158.6
December	124.7	102.0	100.9	116.4	112.6	141.5	108.7	108.5	127.0	111.7	145.7	95.3	137.2	161.3
2000														
March	132.5	105.5	98.8	117.2	112.6	141.5	109.9	109.4	127.0	111.7	156.8	96.6	141.5	161.3
June	133.5	111.2	98.8	117.2	115.1	141.2	109.9	111.2	125.0	113.5	147.3	98.0	141.5	160.2
September	132.8	111.2	101.9	116.7	115.1	141.2	109.4	111.5	123.8	117.6	146.9	90.2	142.3	163.5
December	130.7	109.5	98.3	116.6	114.9	141.3	109.7	113.4	122.5	117.6	147.2	91.2	144.5	169.9
2001														
March	127.9	109.5	96.6	117.3	114.8	142.3	110.0	113.4	121.8	118.4	147.2	92.7	144.5	161.2
June	125.5	110.0	95.3	117.3	113.9	142.3	110.1	114.2	118.7	120.7	147.2	92.7	144.5	159.7
ADELAIDE														
1997-1998	154.4	117.8	113.9	122.1	120.2	114.5	114.1	119.6	113.0	122.2	120.1	113.5	121.3	125.4
1998-1999	166.6	119.5	110.5	123.1	121.1	114.6	108.9	122.1	113.3	125.3	119.5	113.3	125.1	120.1
1999-2000	181.5	120.2	109.4	124.1	124.1	116.8	100.0	123.7	113.7	128.7	117.7	113.2	127.8	121.8
2000-2001	193.4	121.1	107.8	126.8	128.9	121.6	99.0	132.3	120.0	138.7	119.8	102.5	129.5	127.6
1997														
June	149.6	116.5	114.1	121.1	120.5	114.6	113.7	117.6	112.2	122.5	119.7	113.5	126.3	124.4
September	152.5	116.5	115.0	121.2	120.5	114.6	113.7	117.6	112.1	122.5	120.6	113.5	125.6	126.8
December	149.5	118.4	115.1	121.8	120.1	114.5	113.7	118.8	113.2	122.5	120.6	113.5	122.9	128.0
1998														
March	157.8	118.4	112.9	122.7	120.1	114.5	113.7	119.4	113.2	121.8	119.2	113.5	114.9	124.6
June	157.7	117.9	112.6	122.7	120.1	114.5	115.2	122.4	113.3	121.8	120.0	113.5	121.9	122.2
September	162.7	118.1	111.1	123.1	121.3	114.5	110.8	122.4	113.3	124.9	120.2	113.5	123.9	120.9
December	162.7	120.1	110.8	123.1	121.2	114.5	109.1	122.4	113.3	124.9	120.2	113.5	124.0	120.3
1999														
March	170.6	119.5	110.1	123.1	120.7	114.6	109.1	122.4	113.3	124.9	120.2	113.2	125.9	119.6
June	170.3	120.3	109.8	123.1	121.0	114.6	106.7	121.0	113.1	126.6	117.4	113.1	126.5	119.6
September	170.3	120.0	109.1	122.2	121.0	114.6	102.3	121.9	113.3	128.4	117.4	113.1	126.7	120.7
December	172.9	120.0	108.9	123.9	123.1	115.6	101.4	121.9	113.3	128.4	117.4	112.8	126.6	121.9
2000														
March	183.9	120.3	109.5	125.0	123.1	115.6	100.2	124.2	113.3	128.4	117.1	113.2	128.6	121.9
June	198.7	120.6	110.1	125.1	129.0	121.3	96.2	126.8	114.7	129.6	118.7	113.5	129.2	122.5
September	203.8	120.4	108.1	124.1	128.9	120.9	96.3	132.3	119.0	138.0	118.7	102.6	128.3	124.7
December	200.5	120.6	107.7	126.6	128.9	121.8	100.6	133.2	119.1	138.1	119.1	102.6	130.6	127.8
2001														
March	186.2	121.6	107.5	127.9	128.8	121.8	99.9	131.9	120.4	138.1	120.6	101.6	128.3	130.8
June	183.2	121.6	107.9	128.6	129.1	121.8	99.3	131.9	121.3	140.6	120.6	103.1	130.9	127.0

n.a. not available

(a) Base of each index: 1989-90 = 100.0

SELECTED MAJOR BUILDING MATERIALS, Index Numbers(a)—Perth and Hobart

Period	Structural timber	Clay bricks	Ready mixed concrete	Precast concrete products	Steel decking and cladding	Structural steel	Reinforcing steel bar fabric and mesh	Aluminium windows	Fabricated steel products	Builders hardware	Sand and aggregate	Carpet	Paint and other coatings	Non-ferrous pipes and fittings
PERTH														
1997-1998	106.8	n.a.	117.4	142.1	116.2	116.5	99.5	117.9	111.6	136.3	118.9	107.2	146.7	130.8
1998-1999	105.0	n.a.	114.5	141.7	116.4	117.5	89.2	115.0	112.1	136.6	120.4	105.8	144.8	129.2
1999-2000	103.3	n.a.	114.1	143.2	117.2	119.2	90.1	116.6	111.7	140.6	122.8	106.3	151.5	134.3
2000-2001	106.1	n.a.	110.2	146.4	118.7	120.6	92.1	122.8	111.8	145.5	125.0	100.0	149.7	141.7
1997														
June	107.2	n.a.	120.1	141.6	116.9	116.1	107.3	118.8	111.9	135.1	118.0	102.3	146.3	123.7
September	107.2	n.a.	118.8	141.6	116.9	116.1	107.0	118.8	111.6	135.0	118.3	102.3	147.5	131.5
December	107.4	n.a.	117.2	142.4	116.6	116.1	99.9	118.8	111.5	137.1	118.2	108.8	147.5	130.7
1998														
March	106.4	n.a.	116.8	141.6	115.6	116.7	98.3	117.0	111.8	136.4	119.5	108.8	147.4	131.4
June	106.1	n.a.	116.8	142.7	115.6	116.9	92.6	117.0	111.5	136.6	119.4	108.8	144.4	129.6
September	106.5	n.a.	115.9	142.4	117.1	117.6	90.2	117.0	111.7	137.3	120.3	108.8	140.6	129.6
December	104.6	n.a.	115.0	141.8	116.7	117.4	91.3	113.8	112.2	136.1	120.4	104.8	146.2	129.0
1999														
March	105.0	n.a.	113.3	141.2	116.0	117.4	87.9	113.8	112.0	135.9	120.4	104.8	145.4	129.0
June	103.9	n.a.	113.9	141.2	115.8	117.4	87.4	115.2	112.3	136.9	120.4	104.8	147.1	129.0
September	100.8	n.a.	113.8	142.0	115.8	117.1	87.1	115.2	112.3	138.1	120.7	104.8	147.1	131.7
December	101.6	n.a.	114.5	143.5	117.3	118.5	87.5	116.4	111.6	140.4	122.4	106.2	154.0	136.8
2000														
March	104.6	n.a.	114.0	143.6	117.5	120.5	92.5	116.4	111.7	140.4	123.5	106.5	155.3	134.4
June	106.3	n.a.	114.0	143.8	118.0	120.5	93.4	118.5	111.3	143.5	124.7	107.5	149.5	134.4
September	106.4	n.a.	110.2	144.6	117.9	120.5	89.2	119.3	111.0	143.7	124.3	98.0	149.4	139.8
December	106.5	n.a.	110.5	144.6	119.0	120.5	93.0	122.9	111.4	143.3	125.1	100.3	152.1	141.7
2001														
March	105.3	n.a.	109.4	148.1	119.0	120.5	93.4	123.1	112.0	143.6	125.3	100.8	152.5	142.7
June	106.0	n.a.	110.5	148.2	119.0	120.9	92.6	125.9	112.8	151.5	125.1	100.7	144.8	142.7
HOBART														
1997-1998	108.9	129.0	118.0	131.5	117.8	127.2	112.7	107.2	114.7	113.7	124.5	106.5	127.3	164.3
1998-1999	109.1	130.8	119.5	131.6	110.8	128.0	113.4	107.3	116.0	113.4	127.9	104.4	133.3	161.2
1999-2000	114.4	129.1	118.1	131.6	109.6	128.8	110.5	108.5	114.0	116.0	144.0	103.3	133.7	168.2
2000-2001	120.6	132.6	117.9	131.6	107.6	129.3	107.8	116.8	114.0	119.3	147.9	95.0	135.0	185.6
1997														
June	108.9	125.7	117.4	131.2	118.8	126.8	110.9	106.8	113.5	115.2	129.9	105.9	125.5	167.2
September	107.5	127.9	114.9	131.2	118.9	126.9	110.9	106.8	114.0	115.3	121.4	105.9	124.6	168.5
December	106.6	129.4	116.8	131.2	118.9	127.1	113.0	106.8	114.0	112.5	121.4	105.9	123.5	163.0
1998														
March	109.2	129.4	120.4	131.7	118.9	127.4	113.5	106.8	114.8	112.8	127.5	106.4	130.5	162.9
June	112.4	129.4	119.9	131.7	114.3	127.4	113.4	108.4	116.1	114.0	127.5	107.6	130.7	162.6
September	109.4	130.2	119.2	131.7	111.3	127.7	113.4	108.4	116.1	113.7	127.9	107.6	132.7	162.8
December	108.9	131.1	120.6	131.7	111.3	128.1	113.3	106.7	116.1	113.9	127.9	103.3	133.9	160.2
1999														
March	108.9	131.1	120.4	131.5	110.3	128.1	113.4	106.9	116.1	114.8	127.9	103.3	134.2	161.4
June	109.2	130.8	117.9	131.5	110.3	128.1	113.4	107.0	115.6	111.3	127.9	103.3	132.5	160.2
September	108.2	126.9	119.4	131.6	113.7	128.8	113.4	107.0	116.1	110.8	135.4	103.8	131.7	162.4
December	111.7	126.9	118.0	131.6	104.6	128.8	110.2	107.0	113.6	114.8	139.4	103.8	133.5	166.0
2000														
March	116.9	130.9	117.5	131.6	110.1	128.8	109.1	109.9	113.1	120.2	150.4	103.8	135.2	167.2
June	120.7	131.6	117.5	131.6	109.8	128.8	109.1	110.1	113.1	118.1	150.9	101.9	134.2	177.0
September	120.9	131.6	117.6	131.6	106.4	129.1	107.8	110.1	113.1	117.3	145.5	94.5	131.8	177.2
December	120.9	131.8	117.6	131.6	108.2	129.4	107.9	116.6	113.0	118.8	146.1	95.0	135.7	183.8
2001														
March	121.4	131.8	119.4	131.6	108.2	129.4	107.8	120.3	116.1	119.6	151.6	95.2	136.2	193.1
June	119.1	135.3	116.9	131.6	107.5	129.4	107.8	120.3	113.9	121.4	148.4	95.2	136.2	188.1

n.a. not available

(a) Base of each index: 1989-90 = 100.0

SPECIAL SERIES, Index Numbers(a)—Weighted Average of Six State Capital Cities

ELECTRICAL MATERIALS.....

Period	All groups excluding electrical materials and mechanical services	ELECTRICAL MATERIALS.....				All electrical materials	All electrical materials excluding lamps and light fittings
		Conductors	Conduit and accessories	Switchboards and switchgear	Lamps and light fittings		
1997-1998	114.1	112.3	132.6	124.2	105.1	115.7	120.0
1998-1999	114.5	108.8	128.6	128.5	107.5	117.7	121.5
1999-2000	115.1	112.4	138.3	133.3	109.4	121.7	126.9
2000-2001	116.9	122.6	148.1	134.2	100.5	119.7	130.5
1997							
June	113.7	114.9	133.1	124.6	106.4	116.0	120.5
September	113.9	117.1	134.6	124.6	104.8	116.3	121.8
December	114.0	112.8	131.3	124.5	104.9	115.6	119.8
1998							
March	114.1	109.3	132.0	124.4	104.7	115.3	119.5
June	114.4	109.9	132.5	123.3	105.8	115.5	118.9
September	114.5	109.4	132.0	124.3	105.4	115.6	119.4
December	114.5	109.3	126.6	126.7	107.4	116.8	119.9
1999							
March	114.4	108.5	127.1	130.9	108.2	118.7	122.7
June	114.6	108.1	128.8	132.1	109.1	119.7	123.8
September	114.2	108.2	131.5	132.6	109.2	120.3	124.6
December	114.4	111.8	135.6	132.9	109.4	121.2	126.0
2000							
March	115.4	113.7	142.3	133.7	109.8	122.5	128.0
June	116.5	115.9	143.8	134.1	109.2	122.7	128.8
September	116.0	117.0	146.8	133.1	99.1	118.2	128.8
December	116.6	123.0	147.8	133.5	100.6	119.5	130.0
2001							
March	117.2	125.2	148.6	134.1	100.2	119.8	130.9
June	117.6	125.3	149.3	135.9	102.0	121.4	132.2

(a) Base of each index: 1989-90 = 100.0

SPECIAL SERIES, Index Numbers(a)—Weighted Average of Six State Capital Cities *continued*

Period	MECHANICAL SERVICES COMPONENTS.....				PLUMBING MATERIALS.....			
	Air conditioning	Fire protection	Elevators, escalators and travelators	All mechanical services	Hydraulic plumbing	Drainage	Roof plumbing	All plumbing materials
1997-1998	118.4	122.5	96.8	115.3	130.5	130.9	114.0	129.1
1998-1999	119.2	122.0	103.4	117.7	127.9	126.5	115.5	126.4
1999-2000	120.3	122.1	106.0	119.1	131.3	140.3	115.4	130.9
2000-2001	113.4	124.3	104.7	115.0	131.6	142.7	118.2	131.5
1997								
June	117.7	122.7	96.1	114.8	128.6	128.1	114.4	127.2
September	118.2	122.8	95.7	114.9	129.8	130.9	114.4	128.5
December	118.4	122.4	96.4	115.2	131.7	131.7	114.0	130.2
1998								
March	118.3	122.6	96.7	115.2	130.8	132.0	114.0	129.5
June	118.8	122.3	98.4	116.0	129.7	128.9	113.5	128.2
September	119.5	122.1	99.5	116.7	129.7	130.8	114.5	128.4
December	119.1	122.1	104.4	117.9	127.1	123.8	115.6	125.4
1999								
March	119.0	122.0	104.8	118.0	127.2	125.8	116.2	125.8
June	119.1	121.9	105.0	118.1	127.4	125.6	115.6	125.9
September	119.2	122.2	106.1	118.5	129.3	135.3	115.1	128.6
December	120.0	122.3	105.5	118.8	130.9	135.7	115.3	130.1
2000								
March	120.9	122.4	105.5	119.3	132.5	143.9	113.8	132.3
June	121.2	121.6	106.9	119.8	132.3	146.1	117.5	132.5
September	111.9	123.1	104.5	113.9	129.6	145.0	117.9	130.1
December	113.1	123.9	105.9	115.2	131.4	144.2	118.1	131.6
2001								
March	114.2	124.8	103.5	115.2	132.5	140.4	118.4	132.0
June	114.4	125.5	104.7	115.8	132.9	141.0	118.2	132.4

(a) Base of each index: 1989-90 = 100.0

Table 10—6407.0: Price Index of Materials Used in Building other than House Building, Six State Capital Cities

SPECIAL SERIES, Index Numbers(a)—Sydney and Melbourne *continued*

Period	MECHANICAL SERVICES COMPONENTS.....				PLUMBING MATERIALS.....			
	Air conditioning	Fire protection	Elevators, escalators and travelators	All mechanical services	Hydraulic plumbing	Drainage	Roof plumbing	All plumbing materials
SYDNEY								
1997-1998	120.1	126.5	95.3	116.6	145.7	132.2	104.5	138.6
1998-1999	120.0	125.7	101.4	118.3	139.1	125.5	107.8	132.5
1999-2000	120.2	125.5	103.9	119.1	142.4	139.9	109.7	137.1
2000-2001	113.5	125.9	101.8	114.6	141.9	139.9	113.9	136.8
1997								
June	118.7	126.1	94.5	115.6	142.9	130.8	104.2	136.3
September	119.0	126.4	94.2	115.7	144.3	134.2	104.5	137.7
December	119.9	126.5	94.8	116.3	147.1	134.5	104.5	140.0
1998								
March	120.1	126.6	95.2	116.6	146.6	133.2	104.5	139.5
June	121.2	126.3	96.9	117.7	144.7	126.8	104.6	137.1
September	121.7	125.9	97.9	118.3	144.4	131.4	106.2	137.5
December	119.7	125.9	102.2	118.3	136.5	121.3	108.3	129.9
1999								
March	119.4	125.5	102.6	118.3	137.5	124.6	108.3	131.1
June	119.3	125.5	102.8	118.3	138.0	124.7	108.3	131.5
September	119.4	125.2	104.0	118.6	140.0	133.7	107.5	134.3
December	119.9	125.4	103.5	118.8	142.2	135.4	107.9	136.3
2000								
March	120.7	125.5	103.5	119.3	144.6	145.4	110.6	139.6
June	120.7	125.7	104.7	119.7	142.8	144.9	112.7	138.2
September	112.1	125.8	101.6	113.8	140.3	143.5	113.4	135.9
December	113.0	125.0	103.5	114.8	141.3	142.8	113.9	136.7
2001								
March	114.4	125.7	100.4	114.7	143.1	137.8	114.2	137.5
June	114.3	127.1	101.5	115.2	142.9	135.3	113.9	137.0
MELBOURNE								
1997-1998	118.4	113.2	99.0	114.9	119.6	135.4	125.3	122.8
1998-1999	120.5	113.1	105.9	118.2	119.9	133.2	126.7	122.8
1999-2000	123.1	113.2	108.7	120.6	123.4	149.7	123.8	127.7
2000-2001	116.6	118.9	106.9	117.0	126.1	157.6	123.8	130.9
1997								
June	118.2	114.4	98.2	114.7	118.1	130.0	126.7	120.9
September	118.8	114.4	97.7	114.8	118.7	132.3	125.7	121.6
December	118.5	112.8	98.8	114.8	121.5	135.1	125.1	124.3
1998								
March	118.1	112.8	98.8	114.6	119.4	136.7	125.1	122.8
June	118.1	112.8	100.7	115.2	118.7	137.6	125.1	122.3
September	119.4	112.8	101.5	116.2	119.6	137.7	125.1	123.0
December	120.4	112.8	107.0	118.4	120.4	131.2	125.5	123.0
1999								
March	120.9	113.3	107.5	118.9	119.8	132.3	129.4	122.7
June	121.2	113.3	107.7	119.2	119.7	131.7	126.6	122.5
September	121.4	113.4	108.8	119.6	121.7	144.2	127.0	125.7
December	122.5	113.4	108.2	120.1	122.4	143.1	127.0	126.1
2000								
March	124.0	112.9	108.2	120.9	124.0	151.9	117.6	128.2
June	124.4	112.9	109.7	121.6	125.6	159.5	123.4	130.6
September	114.5	116.5	106.6	115.4	122.9	159.5	123.8	128.4
December	116.0	119.1	108.4	117.2	126.0	159.5	123.8	131.0
2001								
March	117.4	119.9	105.7	117.3	126.9	154.3	123.8	131.2
June	118.3	120.1	106.7	118.1	128.5	157.1	123.8	132.9

(a) Base of each index: 1989-90 = 100.0

SPECIAL SERIES, Index Numbers(a)—Brisbane and Adelaide

ELECTRICAL MATERIALS.....

Period	All groups excluding electrical materials and mechanical services	ELECTRICAL MATERIALS.....				All electrical materials	All electrical materials excluding lamps and light fittings
		Conductors	Conduit and accessories	Switchboards and switchgear	Lamps and light fittings		
BRISBANE							
1997-1998	119.2	99.2	127.6	129.5	106.4	111.7	115.3
1998-1999	119.9	93.9	123.6	134.8	112.0	115.3	117.3
1999-2000	120.4	95.6	139.3	137.3	112.5	118.0	121.8
2000-2001	121.1	105.9	149.5	141.4	104.3	117.7	127.4
1997							
June	118.8	99.9	125.8	128.4	107.1	110.6	113.4
September	119.6	103.0	127.3	128.5	105.5	111.2	115.1
December	118.9	100.9	127.3	128.5	105.4	111.0	114.8
1998							
March	118.9	96.9	127.3	129.8	106.2	111.6	115.2
June	119.2	96.1	128.6	131.1	108.3	113.0	116.1
September	119.6	95.5	125.4	134.2	109.0	114.0	117.4
December	120.1	97.7	121.2	132.8	111.9	114.5	116.1
1999							
March	120.0	91.3	123.8	136.0	113.4	116.1	117.8
June	119.9	91.1	124.0	136.3	113.7	116.4	118.0
September	120.2	91.1	131.3	136.8	112.2	116.6	119.5
December	120.0	95.1	134.1	137.1	112.0	117.2	120.7
2000							
March	120.5	97.5	144.3	137.6	112.8	118.9	123.1
June	120.9	98.5	147.5	137.7	112.8	119.3	123.8
September	120.9	100.0	147.9	138.5	104.6	116.2	124.6
December	121.2	105.7	148.9	140.8	104.1	117.3	126.8
2001							
March	121.1	108.7	149.0	142.9	104.1	118.3	128.6
June	121.0	109.3	152.2	143.5	104.4	119.0	129.5
ADELAIDE							
1997-1998	116.6	81.7	127.0	126.3	109.1	107.9	107.2
1998-1999	116.3	80.3	131.1	130.0	110.8	110.3	110.0
1999-2000	116.6	82.3	137.8	134.1	112.7	113.3	113.8
2000-2001	118.8	92.1	147.3	135.5	96.7	108.7	117.4
1997							
June	116.1	84.8	124.2	125.8	110.6	107.7	106.0
September	116.2	87.1	124.7	125.7	108.9	107.8	107.1
December	116.6	79.2	124.6	125.7	108.9	107.3	106.2
1998							
March	116.4	79.9	127.5	126.3	108.5	107.6	107.1
June	117.0	80.4	131.1	127.3	110.0	109.0	108.4
September	116.4	80.5	131.1	128.8	110.0	109.5	109.3
December	116.3	80.4	130.9	129.0	110.0	109.6	109.4
1999							
March	116.3	80.3	130.9	129.8	110.1	109.9	109.8
June	116.2	80.0	131.4	132.3	113.2	112.1	111.4
September	115.7	78.6	132.9	132.7	111.3	111.5	111.7
December	115.8	82.2	135.6	133.2	113.0	112.9	112.9
2000							
March	116.6	84.1	141.4	135.2	113.2	114.4	115.3
June	118.2	84.1	141.4	135.2	113.2	114.4	115.3
September	118.2	88.9	146.7	134.8	96.2	108.0	116.5
December	118.9	91.5	147.2	135.6	96.3	108.5	117.4
2001							
March	118.9	92.9	147.8	135.4	96.1	108.5	117.5
June	119.3	95.0	147.6	136.2	98.1	109.7	118.2

(a) Base of each index: 1989-90 = 100.0

SPECIAL SERIES, Index Numbers(a)—Brisbane and Adelaide *continued*

Period	MECHANICAL SERVICES COMPONENTS.....				PLUMBING MATERIALS.....			
	Air conditioning	Fire protection	Elevators, escalators and travelators	All mechanical services	Hydraulic plumbing	Drainage	Roof plumbing	All plumbing materials
BRISBANE								
1997-1998	117.1	121.0	98.3	114.1	129.5	130.4	106.1	125.7
1998-1999	118.4	121.0	103.7	116.4	130.9	126.6	103.0	126.3
1999-2000	120.4	121.5	106.1	118.4	134.2	137.3	105.6	130.3
2000-2001	112.3	122.0	108.4	114.4	131.9	135.3	108.3	128.4
1997								
June	116.8	121.0	98.2	113.9	128.5	129.5	107.9	125.0
September	117.6	121.0	97.7	114.2	130.2	131.9	107.5	126.6
December	116.9	121.0	98.3	114.0	129.4	130.1	107.5	125.6
1998								
March	116.7	121.0	98.1	113.8	129.2	131.2	107.3	125.6
June	117.0	121.0	99.2	114.3	129.2	128.4	102.2	125.1
September	117.0	121.0	99.9	114.5	127.8	128.5	103.0	124.0
December	119.0	121.0	104.5	117.0	132.4	126.3	103.0	127.5
1999								
March	118.6	121.0	105.1	116.9	131.6	125.5	103.0	126.8
June	118.8	121.0	105.3	117.1	131.7	125.9	102.9	126.9
September	118.9	121.0	106.4	117.5	133.4	135.9	103.9	129.5
December	119.7	121.3	105.6	117.8	134.2	136.3	105.1	130.2
2000								
March	121.0	122.5	105.6	118.7	134.6	137.2	105.1	130.7
June	121.8	121.3	106.9	119.4	134.5	139.7	108.4	130.9
September	111.7	121.3	108.3	113.9	131.3	135.9	108.4	127.9
December	112.8	121.3	108.9	114.7	133.4	133.9	108.3	129.4
2001								
March	112.2	122.6	107.6	114.2	131.5	133.9	108.3	127.8
June	112.5	122.7	108.8	114.8	131.5	137.5	108.3	128.3
ADELAIDE								
1997-1998	118.6	127.3	89.6	114.7	117.9	120.6	114.8	118.4
1998-1999	120.1	123.3	95.8	116.8	115.7	121.7	113.4	116.6
1999-2000	120.7	123.0	98.2	117.8	117.7	132.0	114.2	119.5
2000-2001	112.9	124.4	97.8	113.3	117.5	134.8	119.0	119.8
1997								
June	117.6	127.4	88.7	113.8	117.0	114.9	116.1	117.1
September	118.1	127.5	88.4	114.1	118.1	116.9	116.1	118.1
December	118.6	127.5	88.9	114.5	118.5	118.3	114.3	118.7
1998								
March	118.4	128.8	89.4	114.7	117.6	123.9	114.3	118.5
June	119.4	125.2	91.5	115.4	117.2	123.3	114.3	118.1
September	119.8	123.5	91.8	115.4	116.3	122.3	114.9	117.2
December	120.4	123.5	96.7	117.3	116.5	121.3	115.8	117.3
1999								
March	120.2	123.5	97.2	117.3	115.0	121.3	110.9	115.9
June	120.0	122.8	97.6	117.2	115.0	122.0	111.9	116.0
September	119.5	122.8	98.3	117.1	116.4	129.1	111.9	118.0
December	120.4	122.8	97.6	117.4	117.8	130.3	113.0	119.4
2000								
March	121.3	123.0	97.6	118.0	118.1	133.6	113.0	120.0
June	121.5	123.3	99.3	118.6	118.6	135.0	118.7	120.7
September	110.8	123.6	98.0	112.1	116.0	136.9	118.6	118.7
December	113.1	124.7	98.0	113.6	117.1	132.6	118.7	119.2
2001								
March	113.5	124.7	97.0	113.5	118.4	132.4	119.4	120.3
June	114.0	124.7	98.1	114.1	118.5	137.4	119.4	121.0

(a) Base of each index: 1989-90 = 100.0

SPECIAL SERIES, Index Numbers(a)—Perth and Hobart *continued*

Period	MECHANICAL SERVICES COMPONENTS.....				PLUMBING MATERIALS.....			
	Air conditioning	Fire protection	Elevators, escalators and travelators	All mechanical services	Hydraulic plumbing	Drainage	Roof plumbing	All plumbing materials
PERTH								
1997-1998	114.1	128.5	99.0	113.4	118.5	125.2	126.6	124.6
1998-1999	113.6	130.5	108.5	116.1	118.8	120.0	128.8	124.3
1999-2000	114.6	132.2	110.8	117.6	124.1	129.5	125.7	130.1
2000-2001	107.3	135.0	109.3	113.4	123.2	130.7	128.2	129.4
1997								
June	113.8	128.4	98.1	112.9	115.6	122.7	125.3	121.6
September	114.4	128.4	97.8	113.1	118.5	126.0	126.8	124.7
December	114.5	127.7	98.3	113.3	118.8	126.1	126.8	124.9
1998								
March	114.1	128.1	98.7	113.2	118.5	125.3	126.4	124.6
June	113.4	129.8	101.1	113.8	118.2	123.5	126.4	124.1
September	113.8	130.8	103.9	115.0	118.3	121.2	128.6	124.0
December	113.7	130.8	109.7	116.6	118.7	118.4	128.6	124.0
1999								
March	113.2	130.1	110.2	116.3	119.2	121.3	128.6	124.8
June	113.5	130.1	110.3	116.5	119.1	119.1	129.3	124.5
September	113.5	134.4	111.1	117.4	121.8	126.1	125.8	127.6
December	114.7	134.4	110.0	117.8	124.6	124.3	124.0	129.8
2000								
March	114.6	134.5	110.0	117.7	125.1	133.4	124.7	131.4
June	115.5	125.5	112.1	117.6	124.9	134.1	128.3	131.4
September	106.0	130.9	109.2	112.0	121.5	130.4	128.2	127.9
December	107.7	134.2	108.7	113.3	123.4	130.2	128.2	129.6
2001								
March	108.1	137.5	108.9	114.0	123.7	130.2	128.2	129.9
June	107.5	137.5	110.2	114.1	124.0	131.9	128.2	130.3
HOBART								
1997-1998	120.8	124.8	101.6	117.0	126.7	101.0	127.9	121.9
1998-1999	121.6	125.9	106.2	119.0	130.0	101.4	122.8	124.5
1999-2000	122.7	126.1	108.6	120.3	132.2	106.8	122.5	127.0
2000-2001	114.6	126.7	116.9	118.2	138.0	114.2	126.4	132.7
1997								
June	120.8	123.3	102.6	117.1	127.0	104.1	129.2	122.5
September	121.0	123.3	100.8	116.6	127.2	104.1	130.5	122.8
December	120.5	124.4	101.8	116.8	126.6	102.3	129.6	122.0
1998								
March	121.1	125.7	101.9	117.4	126.6	99.1	129.6	121.6
June	120.5	125.9	101.9	117.1	126.3	98.5	121.9	121.0
September	121.4	125.9	102.5	117.8	130.3	101.8	125.8	124.9
December	121.6	125.9	106.7	119.1	129.5	101.3	122.4	124.1
1999								
March	121.6	125.9	107.6	119.4	130.0	101.2	121.1	124.4
June	121.7	125.9	107.8	119.5	130.1	101.2	121.7	124.5
September	120.7	125.9	109.1	119.3	126.9	105.4	120.9	122.3
December	122.3	125.9	107.6	119.8	131.9	104.6	122.1	126.5
2000								
March	123.2	126.0	107.6	120.3	133.4	106.9	122.7	128.0
June	124.5	126.4	110.2	121.9	136.6	110.1	124.3	131.0
September	113.0	126.4	117.1	117.3	133.6	114.6	125.3	129.1
December	114.0	126.4	117.6	118.0	137.0	113.8	125.3	131.8
2001								
March	115.6	126.9	115.4	118.4	141.8	113.6	129.5	136.0
June	115.6	126.9	117.5	119.0	139.5	114.8	125.3	134.0

(a) Base of each index: 1989-90 = 100.0

TRANSPORT (FREIGHT) & STORAGE INDUSTRY INDEX, Subdivision & Group Contributions

ANZSIC	March Qtr 2001	June Qtr 2001	Change
Transport (freight) & storage division	102.8	103.2	0.4
Road transport (61)	49.89	50.08	0.19
Rail transport (62)	9.94	10.00	0.06
Water transport (63)	11.19	11.30	0.11
Air and space transport (64)	7.64	7.63	-0.01
Services to transport (66)	7.41	7.40	-0.01
Services to water transport (662)	5.98	5.98	0.00
Other services to transport (664)	1.43	1.42	-0.01
Storage (67)	16.74	16.75	0.01

— nil or rounded to zero (including null cells).

PROPERTY AND BUSINESS SERVICES, Subdivision & Group Contributions

ANZSIC	March Qtr 2001	June Qtr 2001	Change
Property and business services division	112.3	113.7	1.4
Property services (77)	66.48	67.22	0.74
Property operators and developers (771)	20.47	20.56	0.09
Real estate agents (772)	41.30	41.97	0.67
Machinery and equipment hiring and leasing (774)	4.71	4.69	-0.02
Business services (78)	45.83	46.47	0.64
Scientific research (781)	0.70	0.70	0.00
Technical services (782)	5.74	5.75	0.01
Computer services (783)	9.05	9.09	0.04
Legal and accounting services (784)	8.29	8.33	0.04
Marketing and business management services (785)	8.33	8.86	0.53
Other business services (786)	13.73	13.75	0.02

TRANSPORT (FREIGHT) & STORAGE SUBDIVISION GROUP & CLASS INDEXES(a)

Period	Road transport (61)	Road freight transport (611)	Road freight transport (6110)	Rail transport (62)	Rail transport (620)	Rail transport (6220)	Water transport (63)	Water transport (630)	International sea transport (6301)	Coastal water transport (6302)
1997-1998	98.8	98.8	98.8	105.1	105.1	105.1	na	na	na	na
1998-1999	100.0	100.0	100.0	100.0	100.0	100.0	100.0	100.0	100.0	100.0
1999-2000	101.0	101.0	101.0	94.4	94.4	94.4	103.8	103.8	105.1	102.5
2000-2001	103.1	103.1	103.1	95.3	95.3	95.3	109.8	109.8	113.8	105.9
1996										
September	na	na	na	111.0	111.0	111.0	na	na	na	na
December	na	na	na	108.5	108.5	108.5	na	na	na	na
1997										
March	97.2	97.2	97.2	110.0	110.0	110.0	na	na	na	na
June	98.1	98.1	98.1	109.5	109.5	109.5	na	na	na	na
September	98.1	98.1	98.1	106.9	106.9	106.9	na	na	na	na
December	99.1	99.1	99.1	106.0	106.0	106.0	na	na	na	na
1998										
March	98.7	98.7	98.7	105.3	105.3	105.3	na	na	na	na
June	99.4	99.4	99.4	102.3	102.3	102.3	na	na	na	na
September	99.4	99.4	99.4	103.3	103.3	103.3	101.8	101.8	104.5	99.2
December	99.7	99.7	99.7	99.8	99.8	99.8	100.4	100.4	101.6	99.3
1999										
March	100.5	100.5	100.5	99.5	99.5	99.5	99.4	99.4	97.7	101.2
June	100.4	100.4	100.4	97.4	97.4	97.4	98.3	98.3	96.2	100.3
September	100.5	100.5	100.5	95.9	95.9	95.9	99.7	99.7	99.0	100.4
December	100.7	100.7	100.7	93.6	93.6	93.6	102.1	102.1	101.4	102.8
2000										
March	100.9	100.9	100.9	94.2	94.2	94.2	104.7	104.7	106.5	102.8
June	101.8	101.8	101.8	93.9	93.9	93.9	108.6	108.6	113.3	103.9
September	101.6	101.6	101.6	93.7	93.7	93.7	108.8	108.8	112.5	105.1
December	102.7	102.7	102.7	95.7	95.7	95.7	108.8	108.8	112.4	105.2
2001										
March	103.8	103.8	103.8	95.7	95.7	95.7	110.3	110.3	114.2	106.4
June	104.2	104.2	104.2	96.2	96.2	96.2	111.4	111.4	116.1	106.7

na not available

(a) Base of each index = 1998-99=100.0.

TRANSPORT (FREIGHT) & STORAGE SUBDIVISION GROUP & CLASS INDEXES(a) *continued*

Period	Air and space transport (64)	Air and space transport (640)	Scheduled international air transport (6401)	Scheduled domestic air transport (6402)	Services to transport (66)	Services to water transport (662)	Stevedoring (6621)	Water transport terminals (6622)	Port operators (6623)	Services to water transport n.e.c. (6629)
1997-1998	na	na	na	na	na	na	101.7	na	101.3	na
1998-1999	100.0	100.0	100.0	100.0	100.0	100.0	100.0	100.0	100.0	100.0
1999-2000	99.1	99.1	100.1	98.2	97.2	96.6	100.0	99.2	95.8	93.6
2000-2001	102.7	102.7	105.4	100.0	97.2	96.2	97.8	99.3	95.5	93.7
1996										
September	na	na	na	na	na	na	112.2	na	105.4	na
December	na	na	na	na	na	na	112.2	na	105.4	na
1997										
March	na	na	na	na	na	na	103.9	na	105.4	na
June	na	na	na	na	na	na	103.9	na	105.4	na
September	na	na	na	na	na	na	101.7	na	101.3	na
December	na	na	na	na	na	na	101.7	na	101.3	na
1998										
March	na	na	na	na	na	na	101.7	na	101.3	102.2
June	na	na	na	na	na	na	101.7	na	101.3	102.2
September	99.2	99.2	97.7	100.8	100.2	100.4	100.0	99.9	100.0	100.9
December	100.2	100.2	99.6	100.8	100.3	100.4	100.0	99.9	100.0	100.9
1999										
March	102.3	102.3	105.3	99.4	99.7	99.5	100.0	99.7	100.0	99.2
June	98.3	98.3	97.5	99.1	99.9	99.8	100.0	100.6	100.0	99.2
September	98.2	98.2	97.2	99.3	97.2	96.6	100.0	99.2	95.8	93.7
December	96.7	96.7	96.0	97.4	97.2	96.6	100.0	99.2	95.8	93.7
2000										
March	100.5	100.5	103.5	97.6	97.2	96.5	100.0	99.2	95.8	93.5
June	101.1	101.1	103.7	98.5	97.0	96.5	100.0	99.2	95.8	93.5
September	101.8	101.8	104.0	99.6	97.2	96.5	100.0	99.2	95.7	93.5
December	103.3	103.3	106.7	99.9	97.5	96.6	100.0	99.3	95.6	93.8
2001										
March	102.9	102.9	105.5	100.3	97.1	95.8	95.6	99.3	95.3	93.8
June	102.8	102.8	105.4	100.2	96.9	95.8	95.6	99.3	95.3	93.8

na not available

(a) Base of each index = 1998-99=100.0.

TRANSPORT (FREIGHT) & STORAGE SUBDIVISION GROUP & CLASS INDEXES(a) *continued*

Period	Other services to transport (664)	Customs agency services (6644)	Storage (67)	Storage (670)	Grain storage (670)	Storage n.e.c. (6709)
1997-1998	na	na	99.4	99.4	100.3	98.4
1998-1999	100.0	100.0	100.0	100.0	100.0	100.0
1999-2000	99.9	99.9	100.9	100.9	100.7	101.2
2000-2001	101.7	101.7	102.1	102.1	102.2	102.0
1996						
September	na	na	93.3	93.3	97.8	88.8
December	na	na	94.4	94.4	97.8	91.1
1997						
March	na	na	97.6	97.6	100.9	94.3
June	na	na	98.3	98.3	100.9	95.7
September	na	na	99.5	99.5	100.9	98.2
December	na	na	99.3	99.3	100.9	97.7
1998						
March	na	na	99.1	99.1	99.8	98.3
June	na	na	99.5	99.5	99.8	99.3
September	99.5	99.5	99.5	99.5	99.8	99.2
December	99.8	99.8	100.3	100.3	99.8	100.7
1999						
March	100.3	100.3	100.1	100.1	100.2	100.1
June	100.3	100.3	100.1	100.1	100.2	100.0
September	100.2	100.2	100.3	100.3	100.2	100.4
December	99.8	99.8	100.4	100.4	100.2	100.7
2000						
March	100.2	100.2	101.3	101.3	101.2	101.5
June	99.4	99.4	101.7	101.7	101.2	102.3
September	100.3	100.3	101.8	101.8	101.2	102.5
December	101.3	101.3	101.7	101.7	101.2	102.1
2001						
March	102.9	102.9	102.4	102.4	103.1	101.7
June	102.2	102.2	102.5	102.5	103.1	101.8

na not available

(a) Base of each index = 1998-99=100.0.

Table 6—6423.0: Producer Price Indexes for Selected Service Industries, Australia

PROPERTY & BUSINESS SERVICES SUBDIVISION GROUP & CLASS INDEXES(a)

Period	Property services (77)	Property operators and developers (771)	Commercial property operators and developers (7712)	Real estate agents (772)	Real estate agents (7720)	Machinery equipment hiring and leasing (774)	Motor vehicle hiring (7741)	Plant hiring or leasing (7743)	Business services (78)	Scientific research (781)
1997-1998	na	96.5	96.5	na	na	97.4	90.2	98.9	na	na
1998-1999	100.0	100.0	100.0	100.0	100.0	100.0	100.0	100.0	100.0	100.0
1999-2000	106.9	102.8	102.8	109.9	109.9	101.3	105.0	100.5	103.8	102.7
2000-2001	115.8	109.0	109.0	121.6	121.6	100.9	102.8	100.4	106.9	104.7
1996										
September	na	91.0	91.0	na	na	102.7	91.8	105.0	na	na
December	na	92.0	92.0	na	na	101.4	91.3	103.5	na	na
1997										
March	na	92.2	92.2	na	na	99.3	91.1	101.0	na	na
June	na	94.4	94.4	na	na	99.7	91.2	101.4	na	na
September	na	95.2	95.2	na	na	98.2	89.9	99.9	na	na
December	na	96.2	96.2	na	na	96.5	89.3	98.0	na	na
1998										
March	na	96.9	96.9	na	na	95.9	89.9	97.1	na	na
June	na	97.7	97.7	na	na	99.0	91.8	100.5	na	na
September	98.3	98.6	98.6	97.9	97.9	99.4	94.8	100.3	99.4	98.3
December	99.9	100.5	100.5	99.5	99.5	99.8	100.5	99.7	99.8	98.4
1999										
March	100.4	100.3	100.3	100.5	100.5	100.4	102.2	100.1	99.0	101.3
June	101.4	100.6	100.6	102.1	102.1	100.4	102.5	99.9	101.7	102.0
September	103.6	101.3	101.3	105.2	105.2	101.1	103.1	100.7	103.1	102.3
December	105.6	102.2	102.2	108.2	108.2	101.4	104.6	100.7	104.1	102.3
2000										
March	107.8	103.0	103.0	111.3	111.3	101.2	105.8	100.3	103.3	103.0
June	110.5	104.6	104.6	115.0	115.0	101.4	106.3	100.4	104.6	103.0
September	113.4	106.3	106.3	118.9	118.9	101.4	102.0	101.2	106.1	103.5
December	115.1	108.7	108.7	120.5	120.5	101.6	103.4	101.2	107.0	104.8
2001										
March	116.7	110.3	110.3	122.5	122.5	100.4	102.8	99.9	106.5	105.1
June	118.0	110.8	110.8	124.5	124.5	100.0	102.9	99.4	108.0	105.2

na not available

(a) Base of each index = 1998-99=100.0.

PROPERTY & BUSINESS SERVICES SUBDIVISION GROUP & CLASS INDEXES(a) *continued*

Period	Scientific research (7810)	Technical services (782)	Architectural services (7821)	Surveying services (7822)	Consultant engineering services (7823)	Computer services (783)	Data processing services (7831)	Information storage and retrieval services (7832)	Computer maintenance services (7833)	Computer consultancy services (7834)
1997-1998	na	na	na	na	na	na	98.0	na	na	na
1998-1999	100.0	100.0	100.0	100.0	100.0	100.0	100.0	100.0	100.0	100.0
1999-2000	102.7	102.2	100.3	102.6	102.9	108.0	105.3	99.1	100.7	109.6
2000-2001	104.7	103.6	100.8	104.9	104.4	111.2	107.9	94.2	102.1	113.5
1996										
September	na	na	na	na	na	na	na	na	na	na
December	na	na	na	na	na	na	na	na	na	na
1997										
March	na	na	na	na	na	na	na	na	na	na
June	na	na	na	na	na	na	96.6	na	na	na
September	na	na	na	na	na	na	97.4	na	na	na
December	na	na	na	99.1	na	na	97.5	97.8	na	na
1998										
March	na	na	na	98.9	na	na	97.8	97.8	na	na
June	na	na	na	99.2	na	na	99.3	98.2	na	na
September	98.3	100.4	100.3	100.0	100.5	97.1	99.7	98.3	99.2	96.4
December	98.4	100.2	100.2	99.4	100.3	97.8	99.1	100.0	99.8	97.3
1999										
March	101.3	99.2	99.9	99.1	98.9	99.1	99.0	100.4	100.5	98.9
June	102.0	100.3	99.6	101.6	100.3	106.1	102.3	101.3	100.6	107.5
September	102.3	101.6	99.6	102.1	102.3	106.4	103.8	101.0	100.5	107.7
December	102.3	102.0	99.9	102.7	102.7	108.2	104.9	100.4	100.7	109.9
2000										
March	103.0	102.3	99.9	102.7	103.1	108.6	105.2	100.0	100.7	110.4
June	103.0	102.9	101.9	103.0	103.3	108.7	107.1	95.1	100.7	110.5
September	103.5	103.0	101.0	103.1	103.7	109.2	107.1	94.2	101.0	111.1
December	104.8	103.3	101.1	104.5	103.9	110.6	107.1	94.1	102.5	112.8
2001										
March	105.1	103.9	100.6	105.6	104.9	112.2	108.7	94.3	102.5	114.7
June	105.2	104.2	100.3	106.3	105.2	112.7	108.7	94.1	102.5	115.4

na not available

(a) Base of each index = 1998-99=100.0.

PROPERTY & BUSINESS SERVICES SUBDIVISION GROUP & CLASS INDEXES(a) continued

Period	Legal and accounting services (784)	Legal services (7841)	Accounting services (7842)	Marketing and business management services (785)	Advertising services (7851)(b)	Commercial art and display services (7852)	Market research services (7853)	Business management services (7855)	Other business services (786)	Employment placement services (7861)
1997-1998	na	na	na	na	na	na	na	na	na	na
1998-1999	100.0	100.0	100.0	100.0	100.0	100.0	100.0	100.0	100.0	100.0
1999-2000	103.1	102.5	103.8	104.2	106.5	102.8	102.8	103.6	102.1	103.7
2000-2001	107.7	106.5	109.2	109.6	114.0	106.3	107.6	108.5	103.7	104.5
1996										
September	na	na	na	na	na	na	na	na	na	na
December	na	na	na	na	na	na	na	na	na	na
1997										
March	na	na	na	na	na	na	na	na	na	na
June	na	na	na	na	na	na	na	na	na	na
September	na	na	na	na	na	na	na	na	na	na
December	na	na	na	na	na	na	na	na	na	na
1998										
March	na	na	na	na	na	98.9	99.5	na	na	na
June	na	na	na	na	na	98.9	99.5	na	na	na
September	99.7	99.9	99.5	100.7	103.7	98.9	99.5	99.6	99.6	100.1
December	99.8	100.0	99.6	102.1	108.1	98.9	99.8	100.1	99.7	99.6
1999										
March	100.2	100.1	100.4	95.6	83.5	100.7	100.2	100.1	100.2	99.9
June	100.3	100.1	100.6	101.7	104.8	101.5	100.4	100.2	100.5	100.4
September	102.0	101.6	102.4	105.0	112.9	102.7	100.6	102.2	101.3	102.1
December	102.3	101.6	103.0	106.4	115.2	102.8	101.8	103.6	102.2	104.9
2000										
March	103.3	102.7	104.0	99.4	87.9	102.9	104.2	104.0	102.8	104.9
June	104.7	103.9	105.7	105.9	109.8	102.9	104.6	104.6	102.0	103.0
September	106.6	106.1	107.2	109.6	117.4	104.8	106.1	107.3	103.2	103.9
December	107.4	106.1	109.0	111.0	120.4	104.8	106.8	108.4	103.9	104.2
2001										
March	108.2	106.9	109.8	105.6	97.1	107.9	108.7	109.2	103.8	105.0
June	108.7	106.9	110.9	112.2	120.9	107.9	108.9	109.2	104.0	104.9

na not available

(a) Base of each index = 1998-99=100.0.

(b) Covers television advertising placement services only, where charges are associated with television rating periods. Other advertising services will be included in due course.

PROPERTY & BUSINESS SERVICES SUBDIVISION GROUP & CLASS INDEXES(a) continued

Period	Contract staff services (7862)	Secretarial services (7863)	Security and investigative services (except police) (7864)	Pest control services (7865)(b)	Cleaning services (7866)	Business services n.e.c. (7869)
1997-1998	na	na	na	na	na	na
1998-1999	100.0	100.0	100.0	100.0	100.0	100.0
1999-2000	103.7	101.2	101.1	102.4	104.2	101.6
2000-2001	109.2	104.9	104.0	104.2	109.4	101.6
1996						
September	na	na	na	na	na	na
December	na	na	na	na	na	na
1997						
March	na	na	na	na	na	na
June	na	na	na	na	na	na
September	na	na	na	na	na	na
December	na	na	na	na	na	na
1998						
March	na	na	na	97.3	na	na
June	na	98.4	na	98.2	98.2	na
September	98.8	99.7	99.9	98.2	99.8	99.5
December	99.3	99.3	99.7	99.4	99.6	99.8
1999						
March	100.5	100.5	100.1	100.5	100.3	100.2
June	101.5	100.5	100.3	101.9	100.3	100.5
September	102.4	100.3	100.7	101.9	103.1	101.0
December	102.6	100.3	100.7	102.8	103.2	102.2
2000						
March	103.5	102.1	101.3	102.5	104.8	102.4
June	106.2	102.1	101.8	102.5	105.5	100.6
September	107.5	102.9	103.8	103.4	108.0	101.6
December	109.4	104.6	103.8	103.4	108.4	102.2
2001						
March	109.7	105.6	104.1	105.1	110.3	101.2
June	110.0	106.5	104.1	104.9	110.7	101.3

na not available

(a) Base of each index = 1998-99=100.0.

(b) Excludes domestic activities.

FOR MORE INFORMATION...

- INTERNET* **www.abs.gov.au** the ABS web site is the best place to start for access to summary data from our latest publications, information about the ABS, advice about upcoming releases, our catalogue, and Australia Now—a statistical profile.
- LIBRARY* A range of ABS publications is available from public and tertiary libraries Australia-wide. Contact your nearest library to determine whether it has the ABS statistics you require, or visit our web site for a list of libraries.
- CPI INFOLINE* For current and historical Consumer Price Index data, call 1902 981 074 (call cost 77c per minute).
- DIAL-A-STATISTIC* For the latest figures for National Accounts, Balance of Payments, Labour Force, Average Weekly Earnings, Estimated Resident Population and the Consumer Price Index call 1900 986 400 (call cost 77c per minute).

INFORMATION SERVICE

Data which have been published and can be provided within five minutes are free of charge. Our information consultants can also help you to access the full range of ABS information—ABS user-pays services can be tailored to your needs, time frame and budget. Publications may be purchased. Specialists are on hand to help you with analytical or methodological advice.

- PHONE* **1300 135 070**
- EMAIL* **client.services@abs.gov.au**
- FAX* 1300 135 211
- POST* Client Services, ABS, GPO Box 796, Sydney 1041

WHY NOT SUBSCRIBE?

ABS subscription services provide regular, convenient and prompt deliveries of ABS publications and products as they are released. Email delivery of monthly and quarterly publications is available.

- PHONE* 1300 366 323
- EMAIL* subscriptions@abs.gov.au
- FAX* 03 9615 7848
- POST* Subscription Services, ABS, GPO Box 2796Y, Melbourne 3001